



# RJ Corman Railroad Group

A Limited Liability Holding Company  
101 RJ Corman Drive • PO Box 788 • Nicholasville, KY 40340-0788  
(859) 881-7521 • Fax: (859) 885-7804 • [www.rjcorman.com](http://www.rjcorman.com)

5/3/2019 - REVISED

Vendors,

You are invited to submit a bid to provide a crossing materials package for the highway grade crossing listed below:

Mt. Pleasant Road, Strasburg, OH, DOT# 142 594T, as shown on attached signal plans

Enclosed bid package also includes material requirements, as well as bidding guidelines. All bids must be submitted on company letterhead and received by **May 17, 2019 at 5:00 pm EST**. Please submit via email to [James.Kelley@RJCorman.com](mailto:James.Kelley@RJCorman.com).

If you have any questions regarding this bid request, please don't hesitate to contact me.

Vendor to provide material delivery to 401 Enterprise Drive, Nicholasville, KY 40356.

**RJ CORMAN WILL PROVIDE WIRING AND INSTALLATION.**

Shipping to begin as soon as possible but no later than 90 days ARO.

Sincerely,  
Jimmy Kelley  
**R.J. Corman Railroad Group**  
PO Box 788  
Nicholasville, KY 40340  
O: 859-881-6637  
[www.rjcorman.com](http://www.rjcorman.com)

**Scope:**

Vendor will provide all necessary equipment, inside and outside, of the shelter per the attached Signal drawing.

**General Design Guidelines:**

1. Material shall comply with all applicable FRA and state regulations and follow current AREMA C&S Manual for Recommended Practices.
2. All material provided shall be new.

**Material Requirements:**

1. Bungalow should be PTMW 6x6 Aluminum – 91000539 C-1
2. Wall mount 115V 1500W heater w/built in thermostat.
3. Train detection will be provided by Siemens MS-4000 Dual Single-Track System with user reference manual.
4. Flasher control will be provided by the Siemens 40amp Crossing Controller. Provide associated Lightning/Surge Arrester panel(s). *See plans for details.*
5. On the main terminal board, no equipment or terminals (other than ground buss) will be lower than 12” above floor
6. Relays will be Siemens ST Style “B” (if needed)
7. Chargers – NRS ELC 12/20 M-D or 12/40 M-D as applicable
8. Batteries – Sealed, Maintenance Free, Lead Acid Batteries
9. Emergency Switch Box Assembly – L&W 2 Position – 3A900436
10. Gate mechanisms to use *WCH 3593-E-131. Shall include the following as designed per mast:*
  - a. 19' - 32' GATE ARMS W/ LED LIGHTS
  - b. 5" BASE (DOUBLE JUNCTION BOX) & 16'5" MAST
  - c. 2-WAY LED FLASHER ASSEMBLIES
  - d. COUNTERWEIGHT KIT
  - e. CROSSBUCK AND ASSOCIATED MOUNTING HARDWARE
  - f. HIGH WIND BRACKET
  - g. ELECTRONIC BELL (if needed) to be Electronic Loud Tone without sensor
  - h. GATE HEATERS (WCH) 115v
  - i. BI-DIRECTIONAL GATE KEEPER
11. Foundations to be galvanized helical by Dixie Precast.
12. Berm Wall to be Dixie Precast steel wall 4' x 15' SRW4WR.
13. Flashing light signals to be 12” LED heads (Miller Felpax) with aluminum visors and backgrounds.
14. Rail Shunt Augmenter – Genesis P/N 08033-2000
15. Insulated joints
16. Vendor to provide all field equipment, including track wire, shunts, rail bonding material, etc.
17. Jointed Rail to be Bonded within approaches please include all associated field materials required.

**Performance & Bidding Guidelines:**

Bids should be detailed in the following format:

LOCATION: \_\_\_\_\_

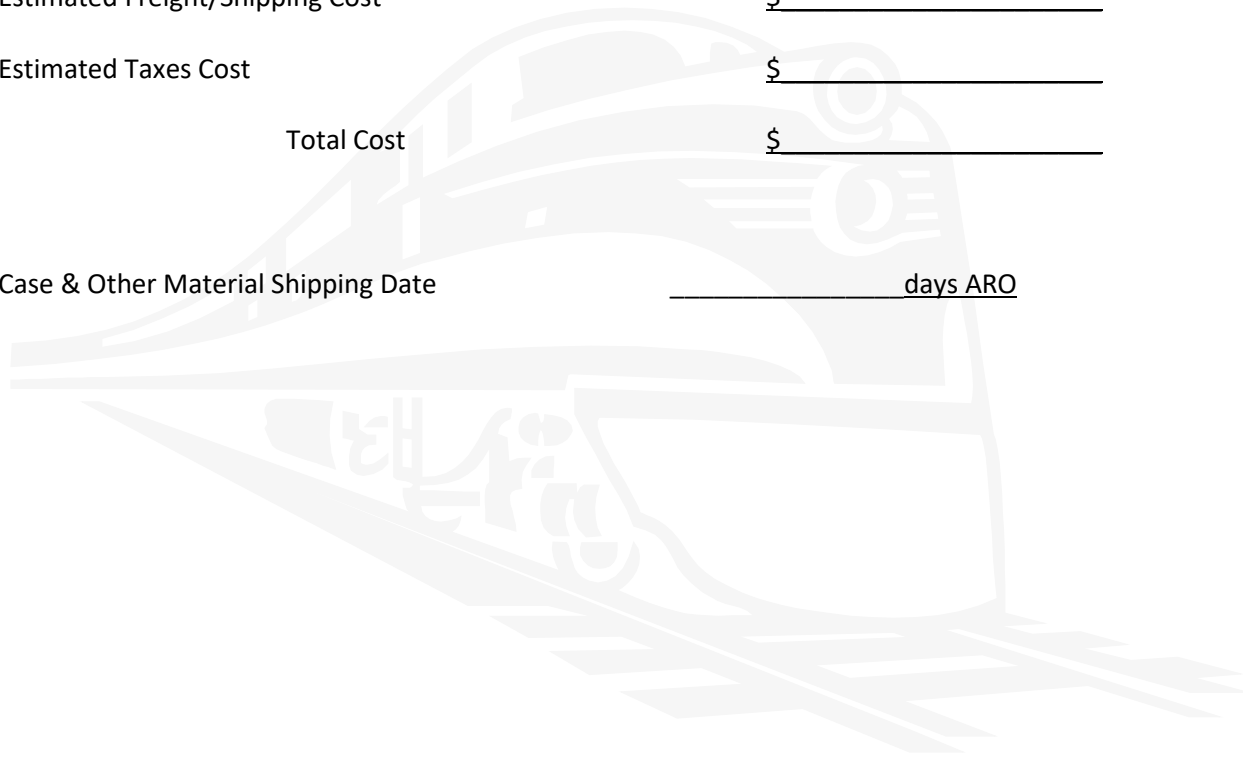
Material Cost \$ \_\_\_\_\_

Estimated Freight/Shipping Cost \$ \_\_\_\_\_

Estimated Taxes Cost \$ \_\_\_\_\_

Total Cost \$ \_\_\_\_\_

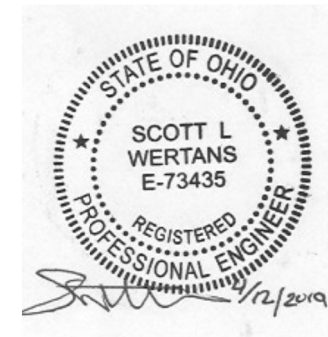
Case & Other Material Shipping Date \_\_\_\_\_ days ARO





SH. NO.	CONTENTS	REV
NX1	INDEX SHEET	1
1	TRACK PLAN	1
2	PROFILE	1
3	TRACK LAYOUT	1
4	LOAD CENTER WIRING	1
5	DC POWER	1
6	MS 4000 GCP	1
7	CONNECTORS FOR TRACK MODULE	1
8	CROSSING CONTROLLER HOOK-UP	1
9	LIGHTING/SURGE PANEL HOOK-UP	1
10	GATE & FLASHER CIRCUITS SIGNAL "A"	1
11	GATE & FLASHER CIRCUITS SIGNAL "B"	1
12	TERMINAL BOARD	1
13	HOUSE SIDE A LAYOUT	1
14	HOUSE SIDE B LAYOUT	1
15	HOUSE SIDE C LAYOUT	1
16	HOUSE SIDE D LAYOUT & TOP VIEW	1

**REVISIONS**

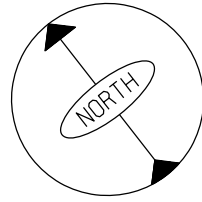
1	03/20/19	MGH	RJC	RWM
ALL NEW 6'X6' BUNGALOW, W/ FLASHERS AND GATES.				
PROJECT: 18CL-SIGMTPLEAS				
IN SERVICE: XX-XX-XX				
PER: XXX			XXX	XXX



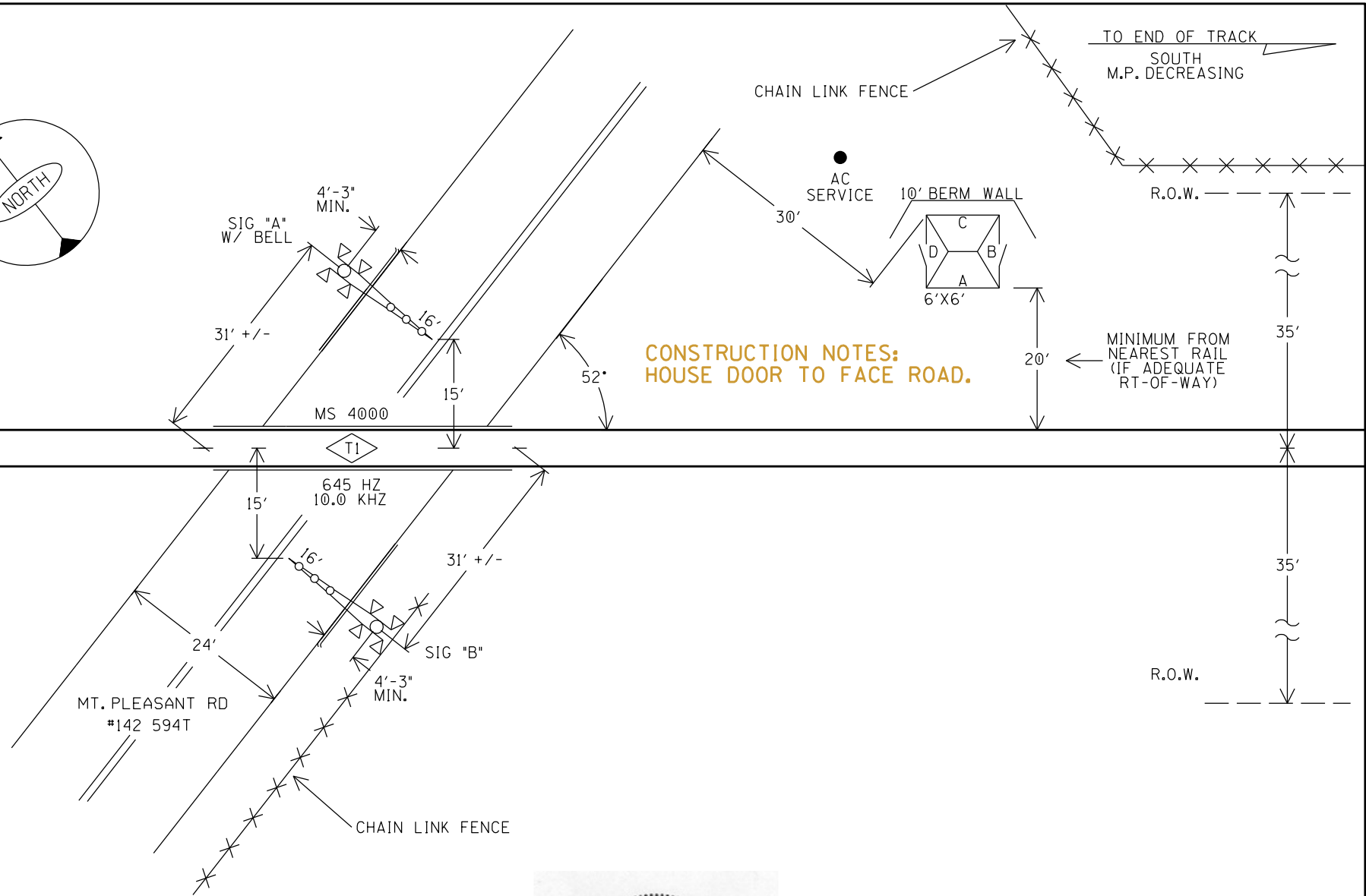
INDEX SHEET

 <b>RJ Corman Railroad</b> 	
<small>P.O. BOX 788 101 RJ CORMAN DR NICHOLASVILLE, KY 40356</small>	
DESIGNED BY: MGH DIGITIZED BY: RJC CHECKED BY: RWM REV 01	MT. PLEASANT RD. STRASBURG, OH M.P. 077.30 D.O.T. 142-594T CLEVELAND LINE
DATE: 03/20/19 FILE: CL07730.NX1 SHEET NX1	

TO WARWICK TERMINAL  
NORTH  
M.P. INCREASING



TO END OF TRACK  
SOUTH  
M.P. DECREASING



CONSTRUCTION NOTES:  
HOUSE DOOR TO FACE ROAD.

MINIMUM FROM  
NEAREST RAIL  
(IF ADEQUATE  
RT-OF-WAY)

**CONSTRUCTION NOTES:**

1. 7' HELICAL GATE FOUNDATIONS.
2. NEW CURB WORK AT GATE QUADS TO INSTALL GATES AT 4'-3" MIN. CURB TO BE TYPE 6, REFER TO DWG. \*BP-5.1. RAILROAD TO DO CURB WORK, COORDINATE WITH THE RAILROAD.
3. DIXIE PRECAST BERM WALL TO BE INSTALLED IN SE QUAD FOR BUNGALOW. APPROX. 20T OF FILL ROCK/DIRT.
4. FIELD TO CONFIRM ALL DISTANCES AFTER INSTALLATION.

Ohio Utilities Protection Service  
**Call 811**  
before you dig



SCALE 1" = 20'  
TRACK PLAN

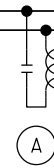
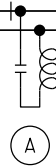
		<b>RJ Corman Railroad</b> <small>P.O. BOX 788 101 RJ CORMAN DR NICHOLASVILLE, KY 40356</small>	
DESIGNED BY: MGH	MT. PLEASANT RD.	DATE: 03/20/19	
DIGITIZED BY: RJC	STRASBURG, OH	FILE: CL07730.01	
CHECKED BY: RWM	M.P. 077.30 D.O.T. 142-594T	SHEET 01	
REV 01	CLEVELAND LINE		

TO WARWICK TERMINAL  
NORTH  
M.P. INCREASING

TO END OF TRACK  
SOUTH  
M.P. DECREASING

1544'  
TO NEAREST  
GCP WIRES

1544'  
TO NEAREST  
GCP WIRES



FLGS  
W/BELL

MS 4000  
TI

FLGS

645 HZ  
10.0 KHZ

MT. PLEASANT RD  
#142 594T

62'  
TO

0'  
TO

62'  
TO

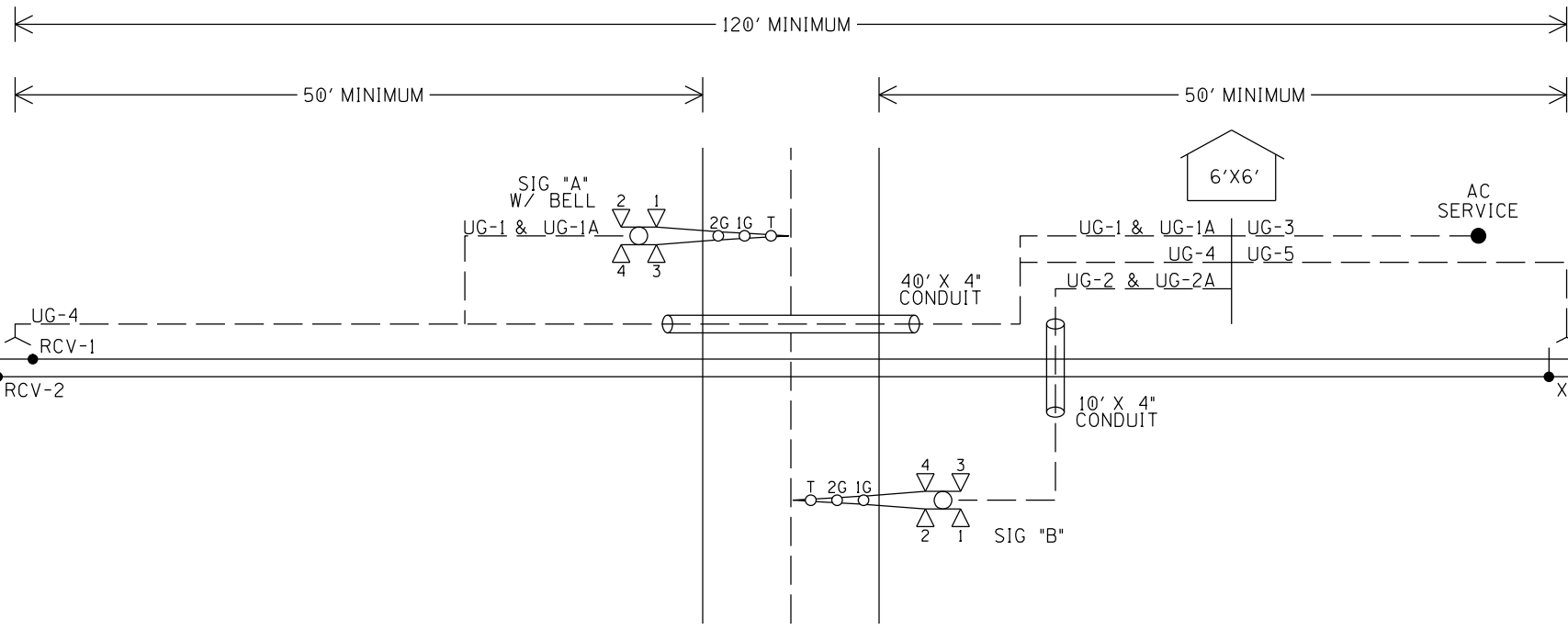
APPROACH CALCULATION INFORMATION	
STANDARD MINIMUM WARNING TIME IN SECONDS	25
ROADWAY GATE TIME IN SECONDS	04
CLEARANCE TIME IN SECONDS	01
DOT TRAFFIC LIGHT SIMULTANEOUS PREEMPT IN SECS	00
<b>DESIGNED WARNING TIME FOR TRAINS AT T.T. SPEED</b>	<b>30</b>
DOT TRAFFIC LIGHT ADVANCE PREEMPT IN SECS	00
CONTROL EQUIPMENT REACTION TIME IN SECONDS	05
<b>DESIGNED DETECTION TIME FOR TRAINS AT T.T. SPEED</b>	<b>35</b>
<b>TIME TABLE MAXIMUM TRAIN SPEED IN MILE PER HOUR</b>	<b>25</b>
BUFFER IN MILE PER HOUR	05
<b>APPROACH SPEED FR CROSSING CALCULATION (AS)</b>	<b>30</b>
<b>APPROACH DISTANCE FORMULA: TTxASx1.47</b>	<b>1.47</b>
<b>APPROACH DISTANCE TO ISLAND EDGE IN FEET</b>	<b>1544'</b>

(A) - NBS-1 62775-3497 (645HZ)



PROFILE

<b>RJ Corman Railroad</b> <small>P.O. BOX 788 101 RJ CORMAN DR NICHOLASVILLE, KY 40356</small>	
DESIGNED BY: MGH DIGITIZED BY: RJC CHECKED BY: RWM REV 01	MT. PLEASANT RD. STRASBURG, OH M.P. 077.30 D.O.T. 142-594T CLEVELAND LINE
DATE: 03/20/19 FILE: CL07730.02 SHEET 02	

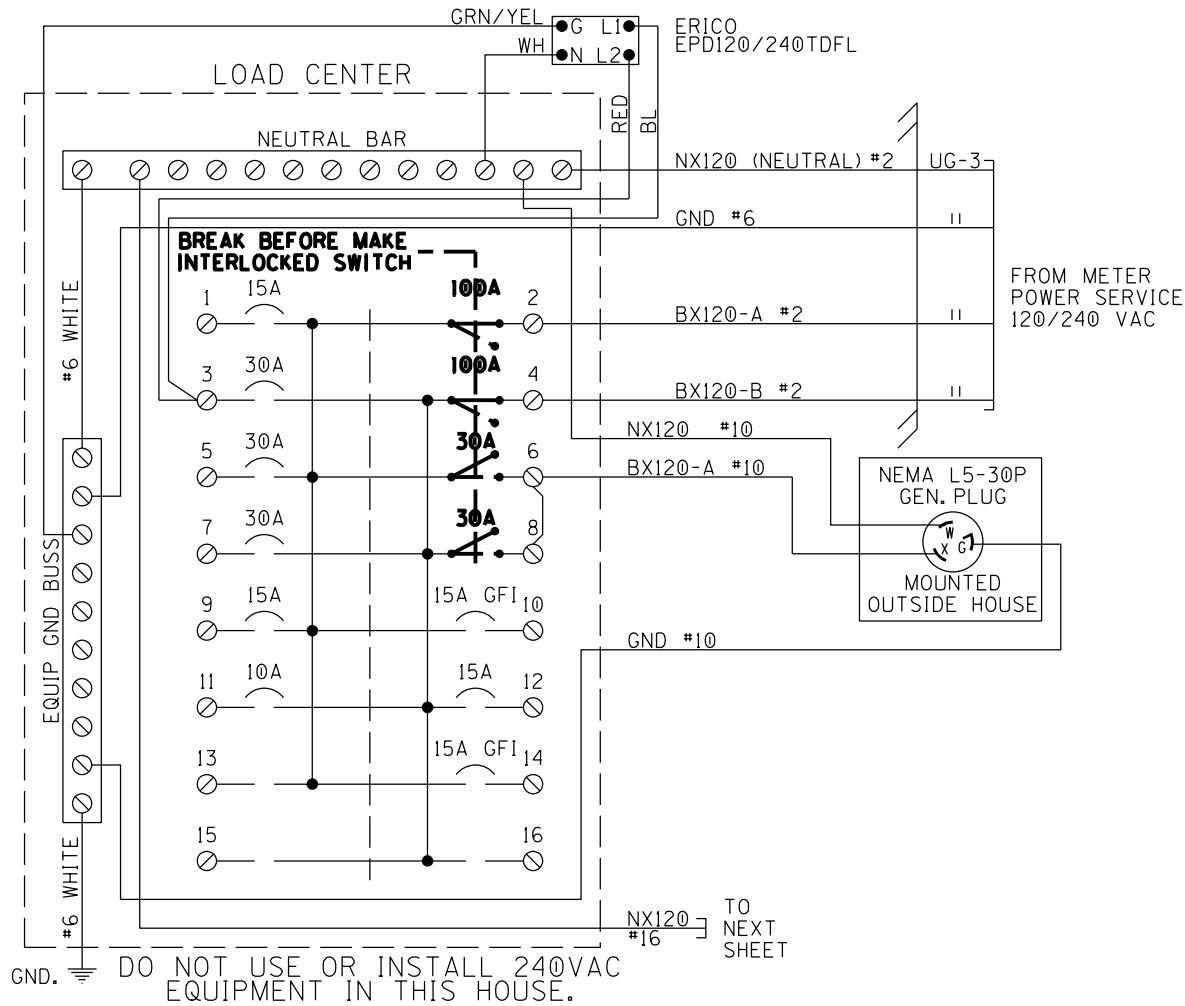


UG-1-7CUG #6	UG-2-7CUG #6	UG-3-3CUG #2 W/#6 GND	UG-4-TW, PR. #6
AEC AEZ AEB AB16 AN16 SPARE 1 SPARE 2	BEC BEZ BEB BB16 BN16 SPARE 1 SPARE 2	BX120-A BX120-B NX120 GND	RCV-1 RCV-2
UG-1A-7CUG #14	UG-2A-7CUG #14		UG-5-TW, PR. #6
AGC ABELL GP GP1 BX110 NX110 SPARE 1	BGC GP2 BB16 BX110 NX110 SPARE 1 SPARE 2		XMT-1 XMT-2

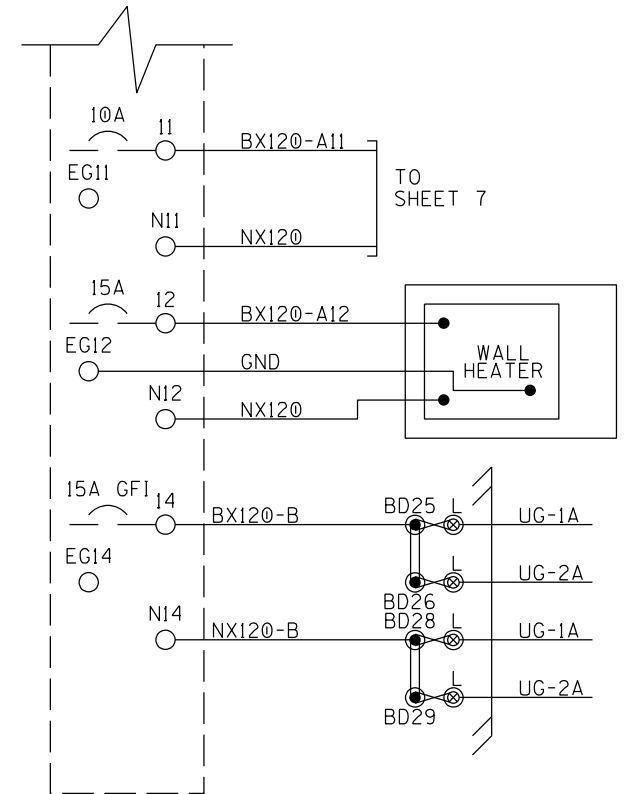
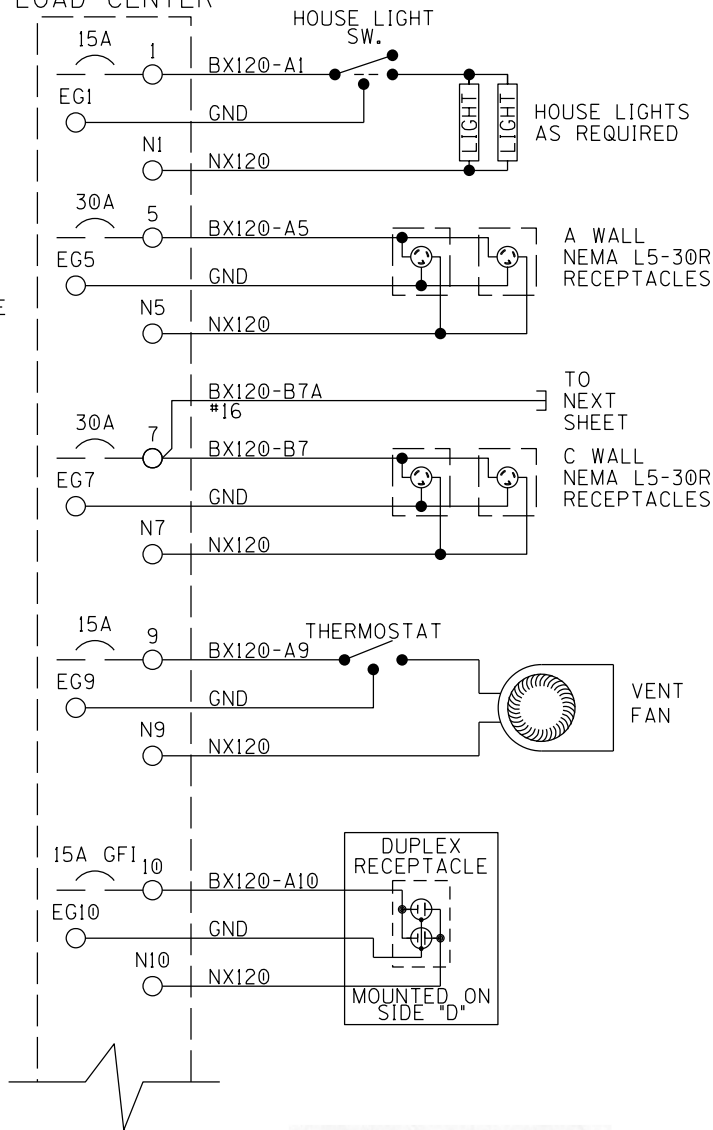


TRACK LAYOUT

<p><b>RJ Corman Railroad</b> P.O. BOX 788 101 RJ CORMAN DR NICHOLASVILLE, KY 40356</p>		
DESIGNED BY: MGH	MT. PLEASANT RD.	DATE: 03/20/19
DIGITIZED BY: RJC	STRASBURG, OH	FILE: CL07730.03
CHECKED BY: RWM	M.P. 077.30 D.O.T. 142-594T	SHEET 03
REV 01	CLEVELAND LINE	



LOAD CENTER



SQUARE "D" PART NUMBERS:

- LOAD CENTER — Q0116L125G
- 10A 1P CIR BKR — Q0110
- 10A 2P CIR BKR — Q0210
- 15A 1P GF1 CIR BKR — Q0115GF1
- 15A 1P CIR BKR — Q0115
- 20A 1P CIR BKR — Q0120
- 30A 1P CIR BKR — Q0130
- 30A 2P CIR BKR — Q0230
- 60A 2P CIR BKR — Q0260
- 100A 2P CIR BKR — Q02100
- MECH INTERLOCK — PK4DT1M4LA

NOTE:

ALL AC WIRING IS TO BE IN METALLIC CONDUIT WITH NO EXPOSED TERMINALS. ALL AC 120V AND 240V EQUIPMENT IS TO BE PROPERLY GROUNDED.

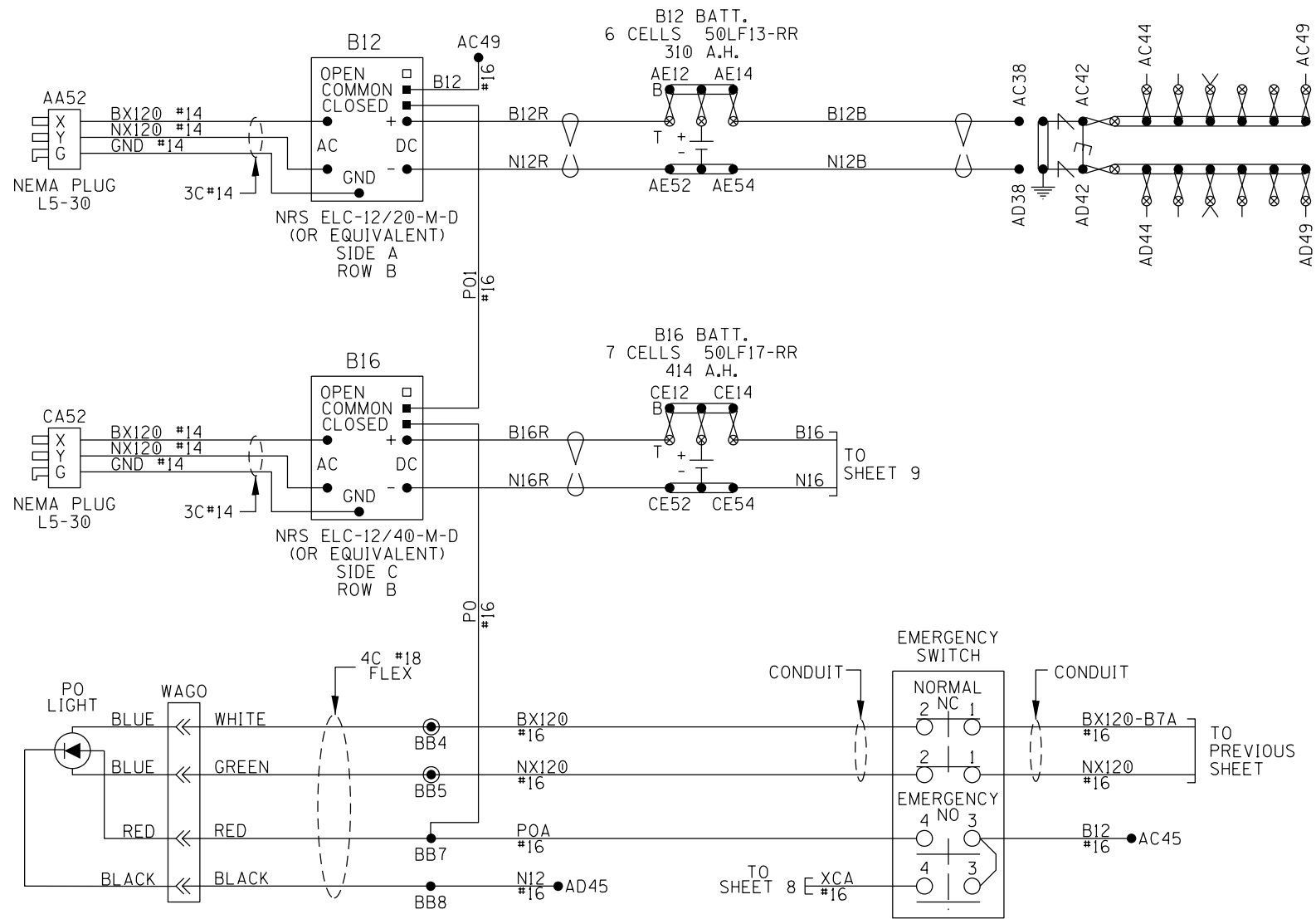
ALL WIRING TO BE #10AWG UNLESS NOTED OTHERWISE.



LOAD CENTER WIRING (120V)

<p><b>RJ Corman Railroad</b> P.O. BOX 788 101 RJ CORMAN DR NICHOLASVILLE, KY 40356</p>		
DESIGNED BY: MGH DIGITIZED BY: RJC CHECKED BY: RWM REV 01	MT. PLEASANT RD. STRASBURG, OH M.P. 077.30 D.O.T. 142-594T CLEVELAND LINE	





NOTES:

1. ALL WIRING TO BE #6AWG UNLESS NOTED OTHERWISE.
  2. DO NOT INSTALL 240VAC CHARGERS.
- = 1 INCH TEST LINK   
 = TEST NUT  
 = TWIST  
 = INSULATED NUT



DC POWER

<b>RJ Corman Railroad</b> <small>P.O. BOX 788 101 RJ CORMAN DR          NICHOLASVILLE, KY 40356</small>		
DESIGNED BY: MGH DIGITIZED BY: RJC CHECKED BY: RWM REV 01	MT. PLEASANT RD. STRASBURG, OH M.P. 077.30    D.O.T. 142-594T CLEVELAND LINE	DATE: 03/20/19 FILE: CL07730.05 SHEET 05

MAIN PROGRAM MENU

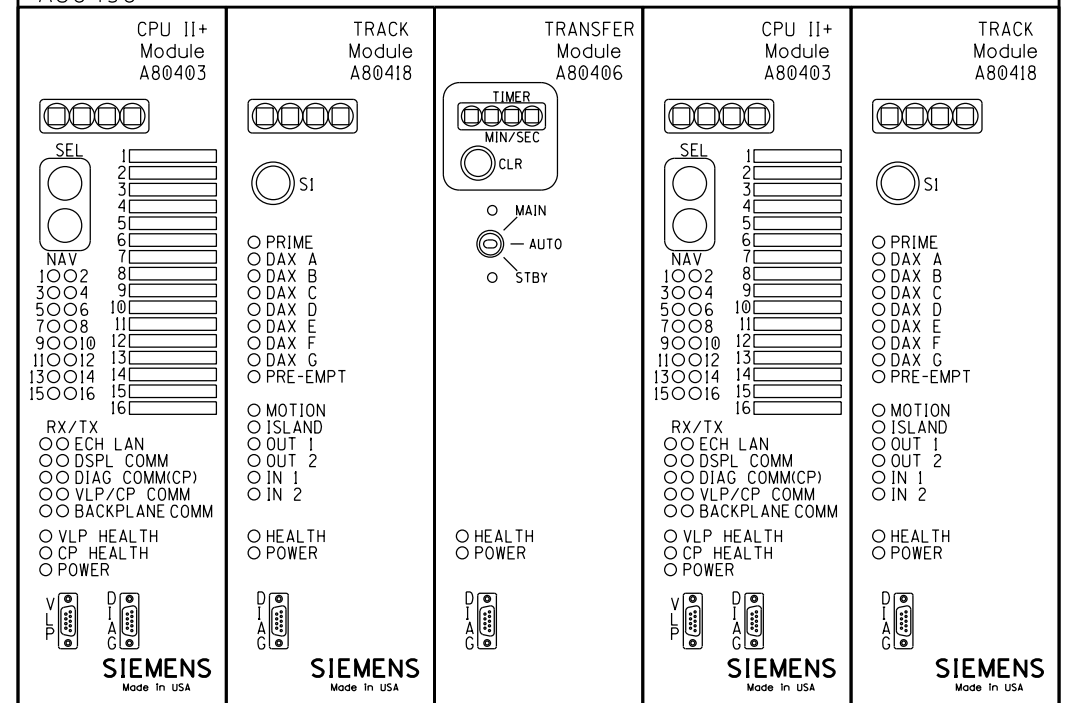
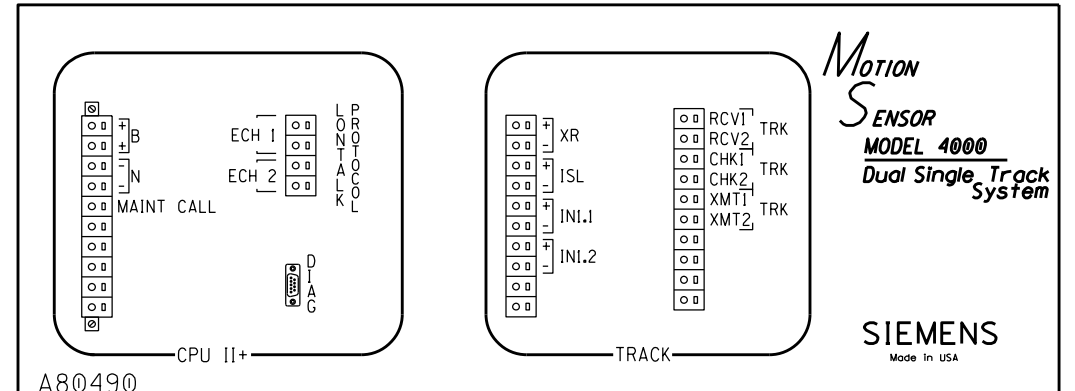
**	PARAMETER	VALUE
1	TEMPLATE	↓ MTF-MS MOTION SENSOR
1A	SET TEMPLATE DEFAULTS	(YES ON INITIAL SETUP)
MS 4000 CONFIGURATION		
2	APPR FREQUENCY	↓ 645 HZ
3	APPR TRANSMIT LEVEL	# ☆ HIGH
4	UNI/BI/SEM-BIDIRNL	↓ BIDIRNL
5	DIRECTIONALLY WIRED	↓ ☆ NO
6	MS PICKUP DELAY	↓ ☆ 15 SEC
7	UAX USED	↓ YES
7A	* PRIME UAX PICKUP	↓ ☆ 5 SEC
8	ISLAND USED	↓ ☆ INTERNAL
8A	* ISL FREQUENCY	↓ 10.0 KHZ
8B	* ISL PICKUP DELAY	↓ (2s+) 3 SECONDS
9	IN 1.1	↓ UAX
10	IN 1.2	↓ NOT USED
11	PRIME MS/GCP MODE	↓ PRED
11A	* PRIME WARNING TIME	↓ 30 SEC
ADVANCED		
12	POSITIVE START	↓ ☆ OFF
13	SUDDEN SHUNT DET USED	↓ ☆ NO
14	LOW EZ DET USED	↓ ☆ NO
15	MS SENSITIVITY LEVEL	# ☆ 36
16	COMPENSATION LEVEL	# ☆ 1300
17	LOW EX ADJUSTMENT	# ☆ 39
18	INBOUND PS SENSITIVITY	# ☆ HIGH
19	SPEED LIMITING USED	# ☆ YES
20	OUTBOUND FALSE ACT LVL	# ☆ NORMAL
OTHER		
21	OOS TIMEOUT	# ☆ 1 HRS
22	DAYLIGHT SAVINGS TIME	# ☆ ON
23	EZ/EX LOGGING	# ☆ CHANGE
24	EZ/EX POINT CHANGE	# ☆ 3
25	ATCS SITE ID	↓ ☆ 762010010016

CONTINUE MAIN PROGRAM MENU

**	PARAMETER	VALUE
26	LOCATION	
26A	* DOT NUMBER	# 142 594T
26B	* MILE POST	# 077.30
26C	* SITE NAME	# MT.PLEASANT RD.

MCF AND OCCN

MCF NAME	GCP-T6X-02-9.mcf
OCCN	68E3BC9C



- NOTES:
1. \* AVAILABLE WHEN PRIOR PARAMETER SELECTED
  2. # SET BY FIELD AS REQUIRED
  3. ☆ DEFAULT SETTING
  4. ↓ IMPACTS OCCN
  5. \*\* STEP SEQUENCE WHEN USING DIAGNOSTIC TERMINAL (DT) VER. 5.7.3 TO SET PROGRAM PARAMETERS. ALPHA NUMERIC STEPS ARE SUB MENUS OF PREVIOUS STEP.



MS 4000 GCP

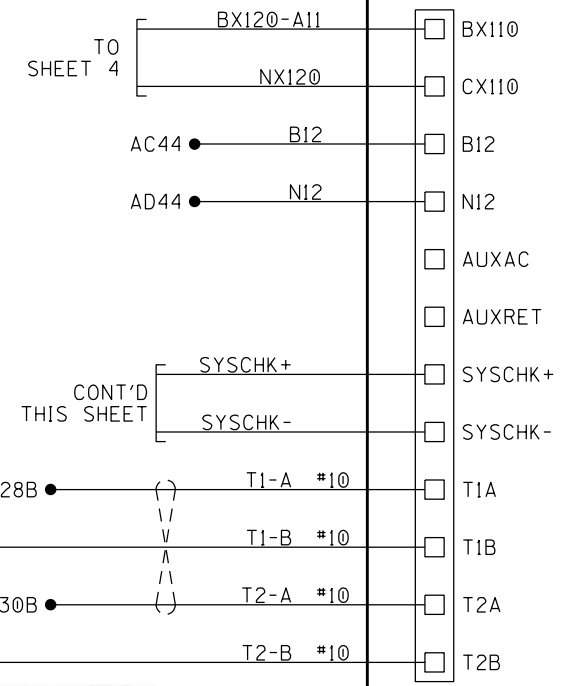
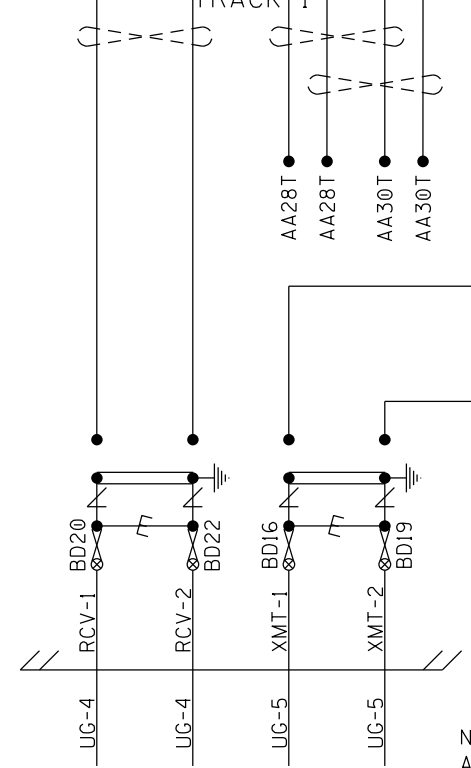
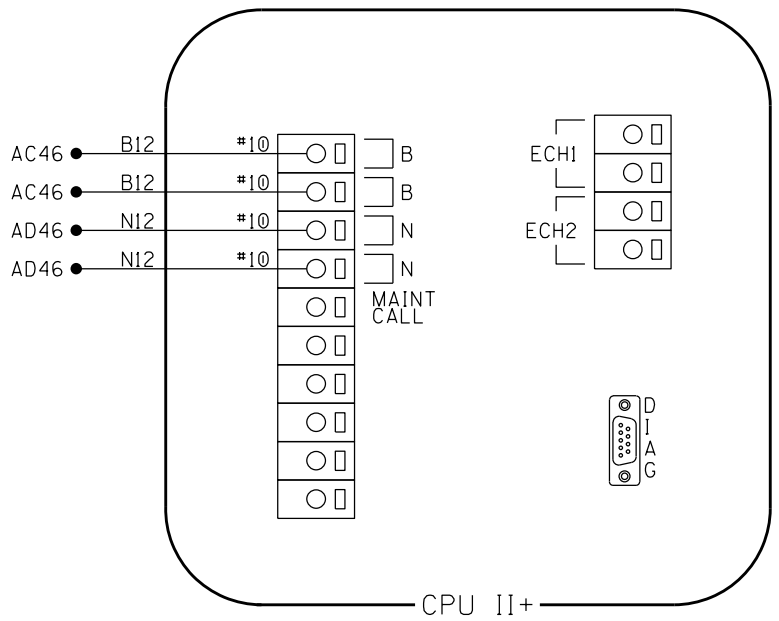
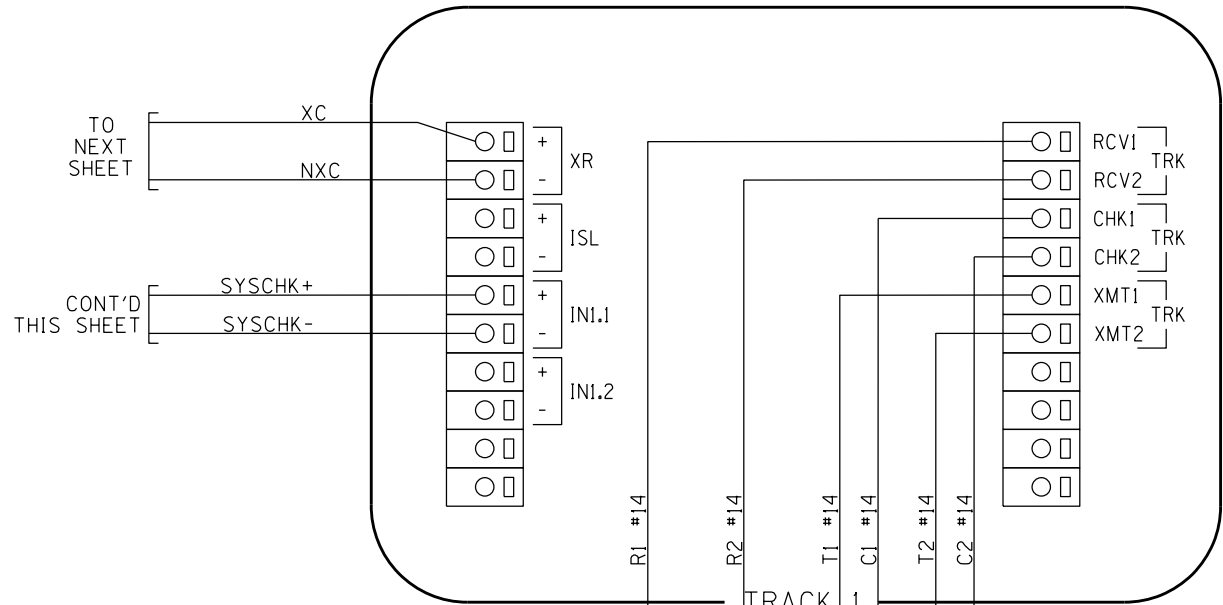
**RJ Corman Railroad**  
 P.O. BOX 788 101 RJ CORMAN DR  
 NICHOLASVILLE, KY 40356

DESIGNED BY: MGH  
 DIGITIZED BY: RJC  
 CHECKED BY: RWM  
 REV 01

MT. PLEASANT RD.  
 STRASBURG, OH  
 M.P. 077.30 D.O.T. 142-594T  
 CLEVELAND LINE

DATE: 03/20/19  
 FILE: CL07730.06  
 SHEET 06

SIDE A  
ROW B



AC LINE 2A  
 DC BATT 15A  
 AVAILABLE HI/LO AC LINE  
 AVAILABLE  
 IN USE  
 SYSCHK FAULT

GENESIS  
 +-Rx7100  
 RAIL SHUNT AUGMENTER  
 P/N 08033-2000



NOTES:  
 ALL WIRING TO BE #16AWG  
 UNLESS NOTED OTHERWISE.  
 = 1 INCH TEST LINK = TEST NUT  
 = TWIST

CONNECTORS FOR TRACK MODULE

<b>RJ Corman Railroad</b> <small>P.O. BOX 788 101 RJ CORMAN DR          NICHOLASVILLE, KY 40356</small>		
DESIGNED BY: MGH DIGITIZED BY: RJC CHECKED BY: RWM REV 01	MT. PLEASANT RD. STRASBURG, OH M.P. 077.30 D.O.T. 142-594T CLEVELAND LINE	DATE: 03/20/19 FILE: CL07730.07 SHEET 07

SIDE A  
ROW B

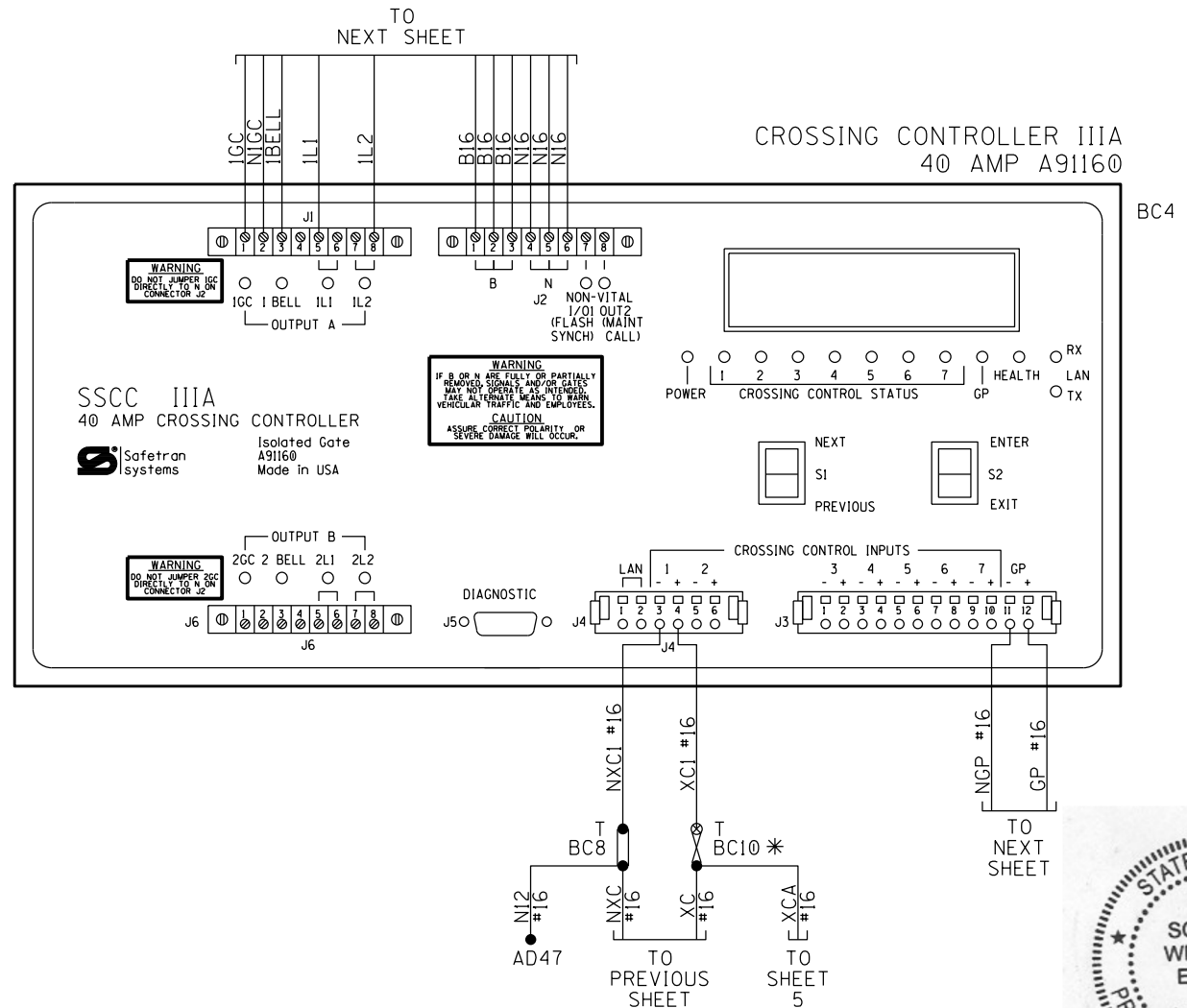
MCF PART NUMBER	MCF NAME	MCF CRC
9V610-A001F	BASIC.MCF	1D240612

PROGRAM		
SUBMENU	NOTES	SETTINGS
FLASH RATE:	30-70 FLASH/MIN DEF.=50	50
GATES USED:	YES/NO DEF.=YES	YES
1GC DELAY:	3-20 SEC. DEF.=4	4 SEC.
2GC DELAY:	3-20 SEC. DEF.=4	0 SEC.
GATE RISING BELL:	ON/OFF DEF.=ON	OFF
MIN ACTIVATE TMR:	0-60 SEC. DEF.=0	20 SEC.
ENABLED INPUTS:	1 THRU 1 TO 7 DEF.=1 THRU 7	1 THRU 1
ENABLED OUTPUTS:	A AND B, A, B DEF.=A AND B	A
TIME:	24 HOUR FORMAT	
DATE:	YYYY MMM DD	
DAYLIGHT SAVING:	ENABLED/DISABLED DEF.=DISABLED	ENABLED
PASSWORD:	ENABLED/DISABLED DEF.=DISABLED	DISABLED

CONFIGURE		
SUBMENU	NOTES	SETTINGS
LOS TIMERS:	0-20 SEC. INPUTS 1-7 DEF.=0	INPUT 1: 0 INPUT 2: 0 INPUT 3: 0 INPUT 4: 0 INPUT 5: 0 INPUT 6: 0 INPUT 7: 0
ATCS ADDRESS:	DEF.=700000000000	700000000000
LOW BATTERY:	9.0-15.0 VOLTS OR DISABLED DEF.=DISABLED	9.0 VOLTS
AUX I/O:	NONVITAL OUTPUT, FLASH SYNC IN, FLASH SYNC OUT DEF.=NONVITAL OUTPUT	NONVITAL OUTPUT
DETECT LAMP NEUTRAL WIRE:	YES/NO DEF.=YES	NO

SETUP LAMP VOLTAGES #	
SUBMENU	PARAMETERS
OUTPUT 1 L1	XX.X VOLTS
OUTPUT 1 L2	XX.X VOLTS
OUTPUT 2 L1	N/A
OUTPUT 2 L2	N/A

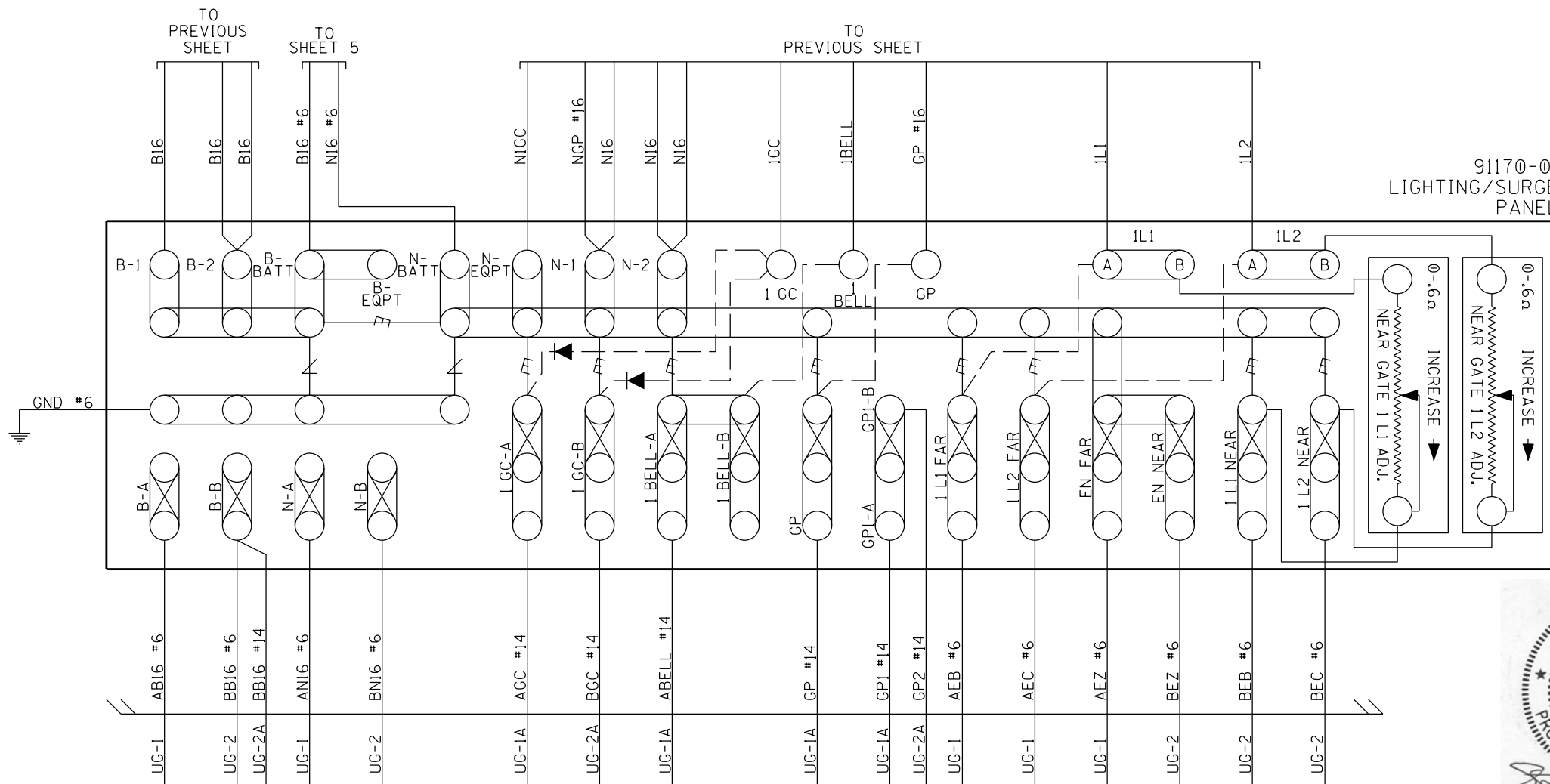
# CONSTRUCTION TO MARK VOLTAGE SETTINGS FOR AS BUILT REVISION.



CROSSING CONTROLLER HOOK-UP

<b>RJ Corman Railroad</b>		
P.O. BOX 788 101 RJ CORMAN DR NICHOLASVILLE, KY 40356		
DESIGNED BY: MGH	MT. PLEASANT RD.	DATE: 03/20/19
DIGITIZED BY: RJC	STRASBURG, OH	FILE: CL07730.08
CHECKED BY: RWM	M.P. 077.30 D.O.T. 142-594T	SHEET 08
REV 01	CLEVELAND LINE	

NOTES:  
 ALL WIRING TO BE #10AWG UNLESS NOTED OTHERWISE.  
 ⊗ = 1 INCH TEST LINK ⊗ = TEST NUT  
 \* = UNDO TEST NUT TO FORCE CROSSING ACTIVATION





91170-01  
LIGHTING/SURGE  
PANEL

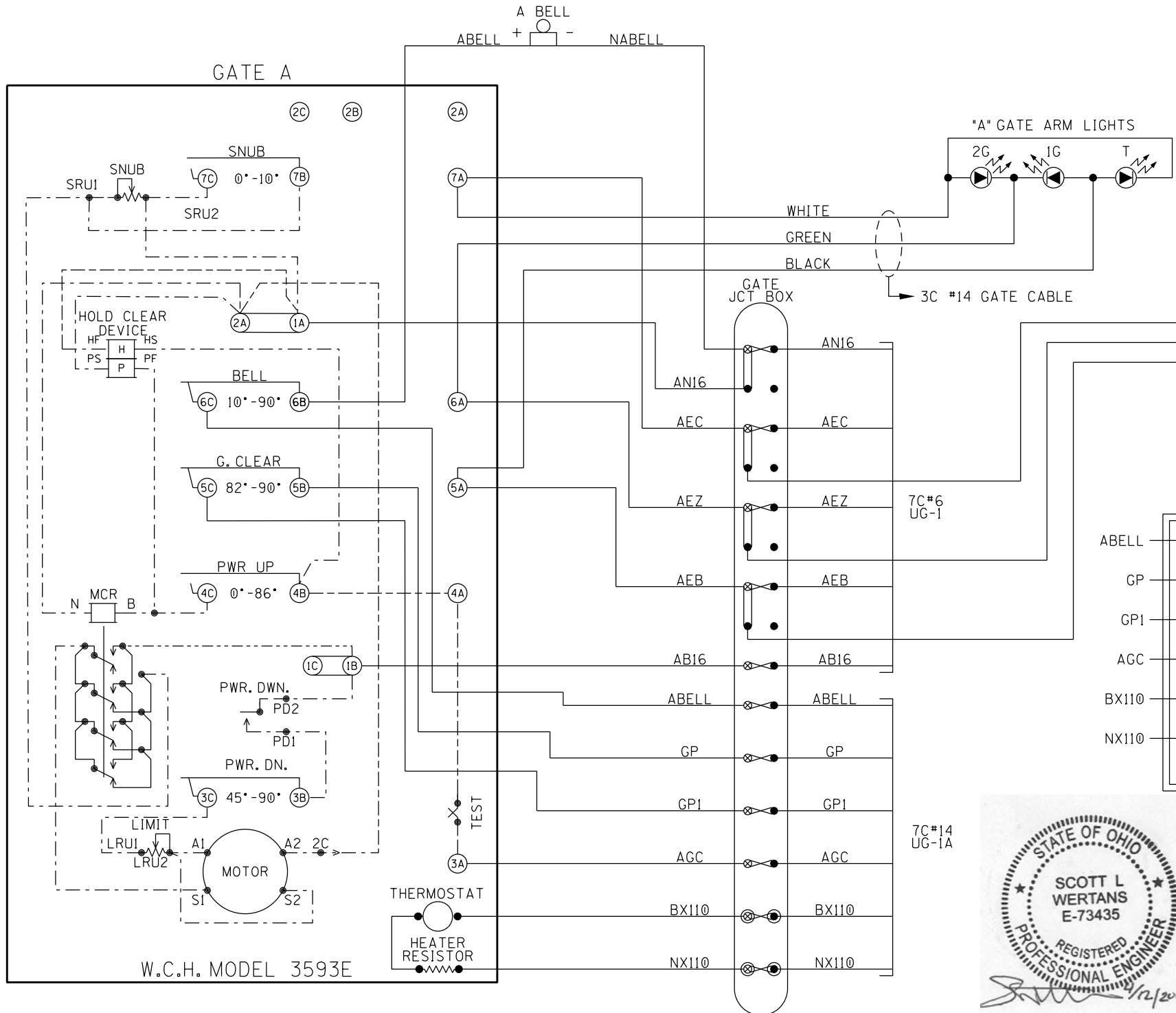
BC49



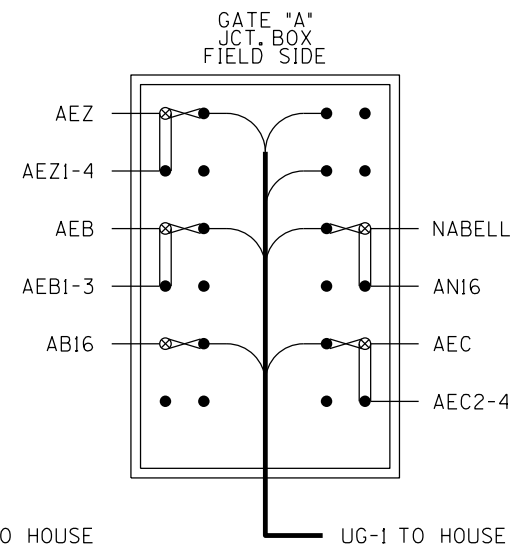
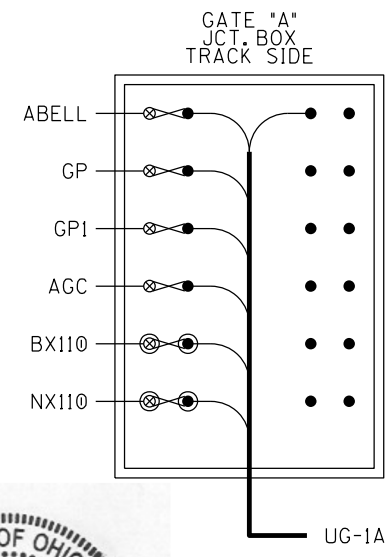
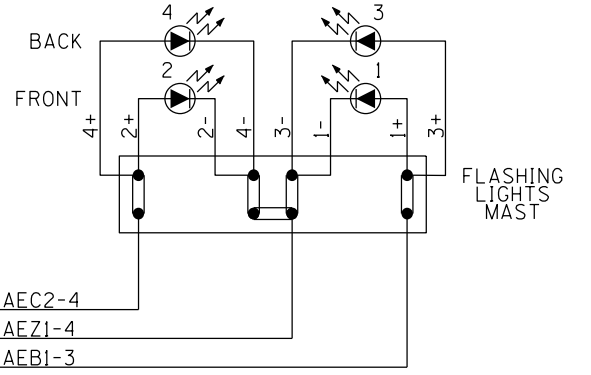
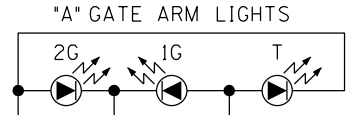
LIGHTING/SURGE PANEL HOOK-UP

NOTE:  
ALL WIRING TO BE #10AWG  
UNLESS NOTED OTHERWISE.  
⚡ = HEAVY DUTY EQUALIZER 022700-1X  
⚡ = HEAVY DUTY CLEARVIEW ARRESTER 022585-1X

 <b>RJ Corman Railroad</b> <small>P.O. BOX 788 101 RJ CORMAN DR NICHOLASVILLE, KY 40356</small>		
DESIGNED BY: MGH DIGITIZED BY: RJC CHECKED BY: RWM REV 01	MT. PLEASANT RD. STRASBURG, OH M.P. 077.30	DATE: 03/20/19 FILE: CL07730.09 SHEET 09
D.O.T. 142-594T CLEVELAND LINE		



- NOTES: 1. GATE MECH. SHOWN IN CLEAR POSITION  
 2. ALL WIRING TO BE #10AWG UNLESS OTHERWISE NOTED.  
 3. [---] = INTERNAL GATE WIRING  
 ● = INSULATED NUT    ⊗ = TEST NUT  
 ⊗ = 1 INCH TEST LINK

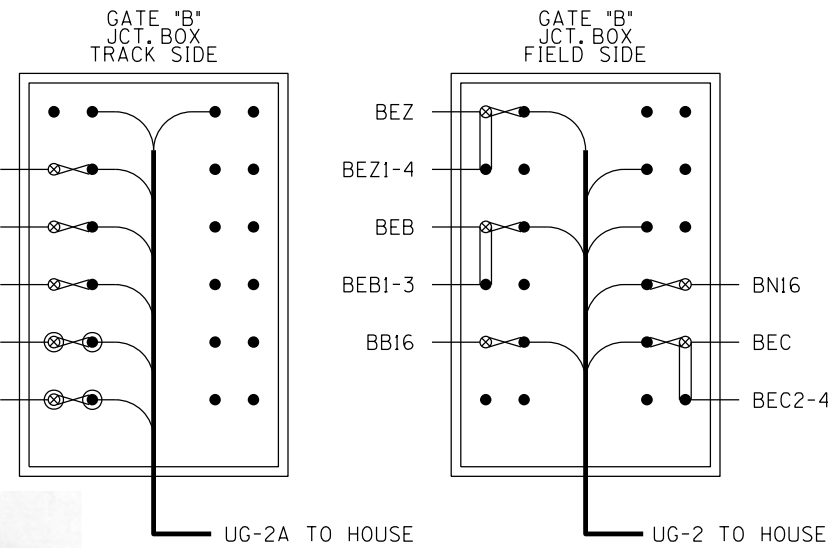
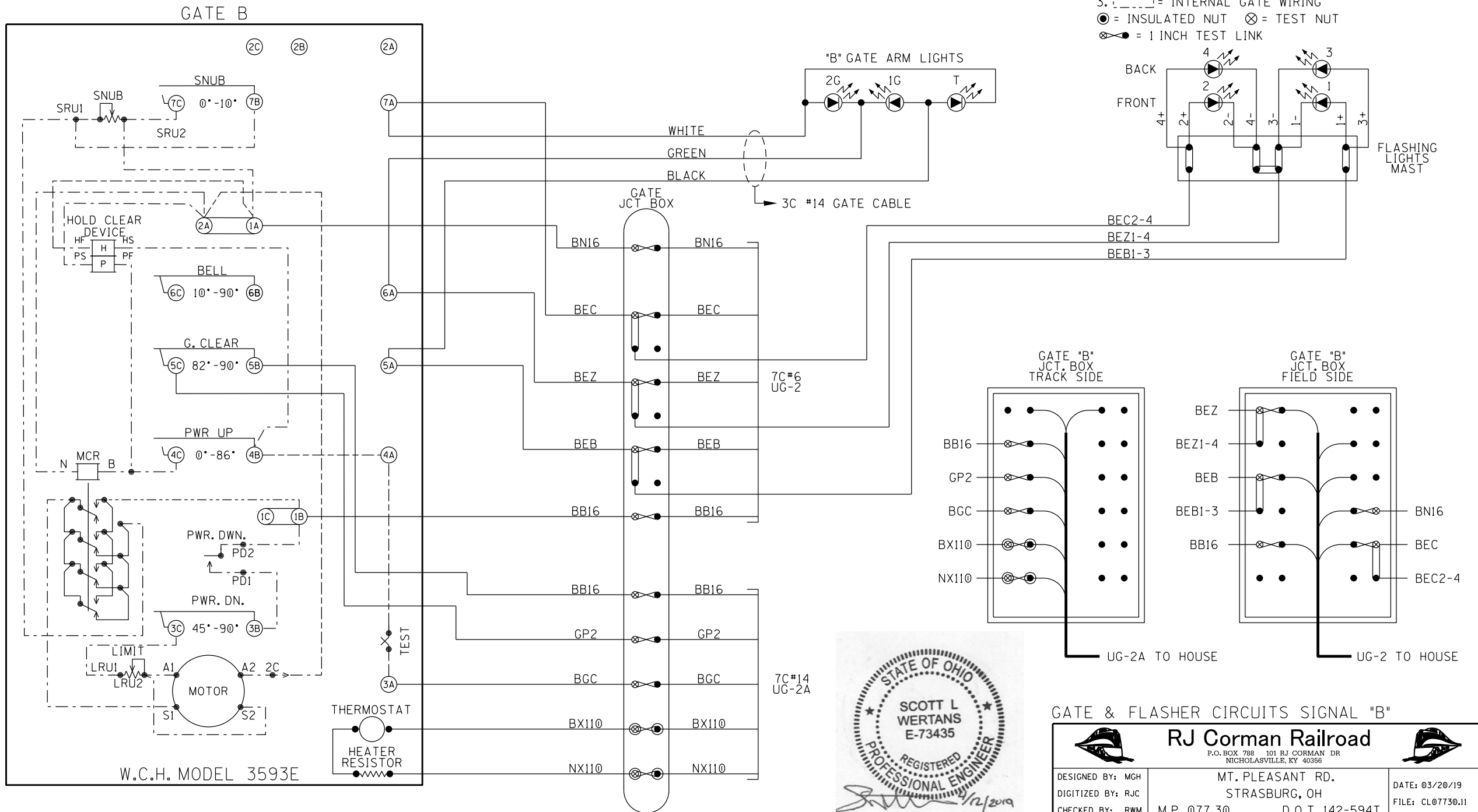


W.C.H. MODEL 3593E

GATE & FLASHER CIRCUITS SIGNAL "A"


<b>RJ Corman Railroad</b>		
<small>P.O. BOX 788 101 RJ CORMAN DR NICHOLASVILLE, KY 40356</small>		
DESIGNED BY: MGH	MT. PLEASANT RD.	DATE: 03/20/19
DIGITIZED BY: RJC	STRASBURG, OH	FILE: CL07730.10
CHECKED BY: RWM	M.P. 077.30	D.O.T. 142-594T
REV 01	CLEVELAND LINE	SHEET 10

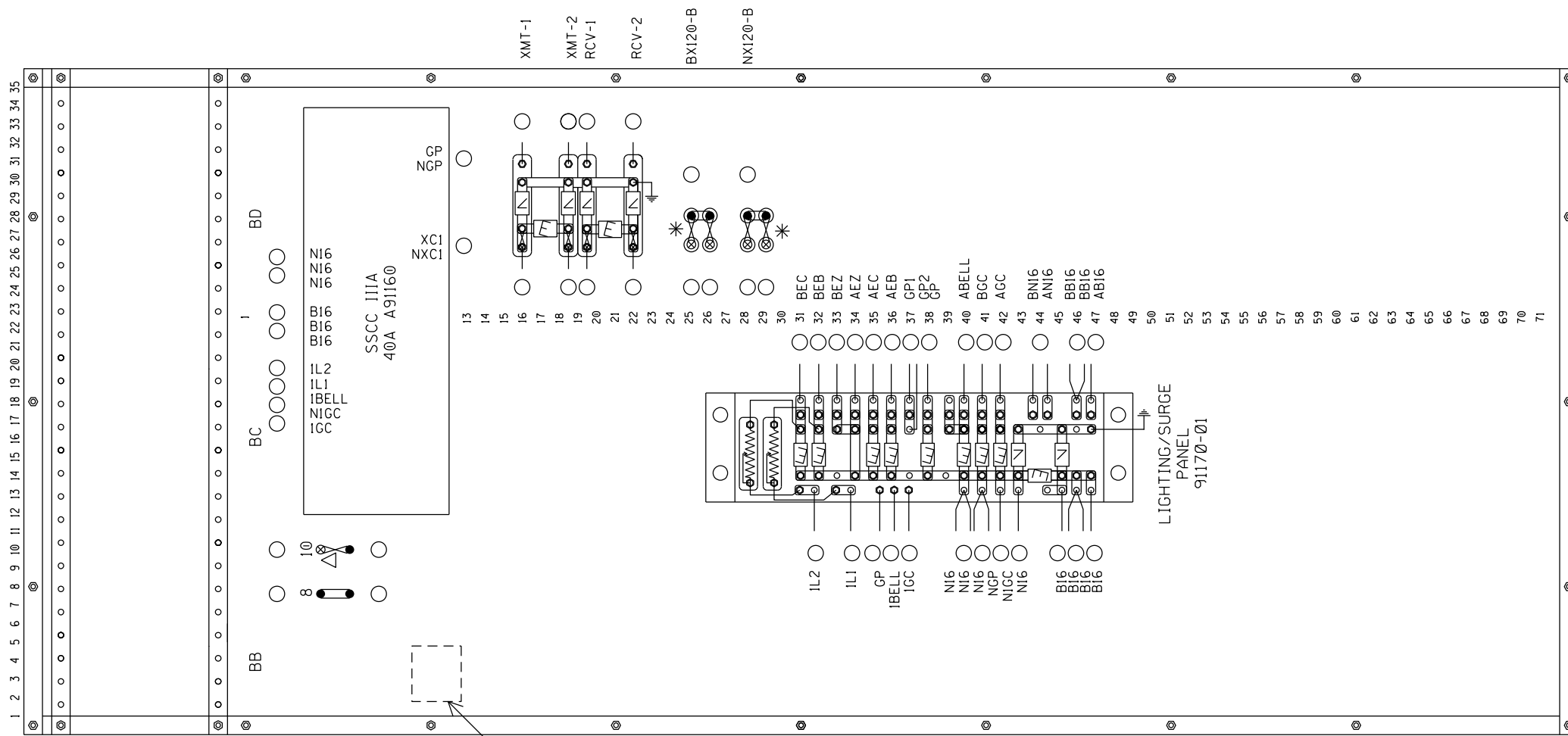
- NOTES: 1. GATE MECH. SHOWN IN CLEAR POSITION  
 2. ALL WIRING TO BE #10AWG UNLESS OTHERWISE NOTED.  
 3. [---] = INTERNAL GATE WIRING  
 ● = INSULATED NUT ⊗ = TEST NUT  
 ⊗ = 1 INCH TEST LINK



W.C.H. MODEL 3593E

GATE & FLASHER CIRCUITS SIGNAL "B"

 <b>RJ Corman Railroad</b> <small>P.O. BOX 788 101 RJ CORMAN DR NICHOLASVILLE, KY 40356</small>		
DESIGNED BY: MGH DIGITIZED BY: RJC CHECKED BY: RWM REV 01	MT. PLEASANT RD. STRASBURG, OH M.P. 077.30 D.O.T. 142-594T CLEVELAND LINE	DATE: 03/20/19 FILE: CL07730.11 SHEET 11



7'-0" X 40" TERMINAL BOARD

EMERGENCY SWITCH MOUNTED ON BACKSIDE OF TERMINAL BOARD

- NOTE:  
 INSTALL TEST LINKS ON ALL TRACK WIRES AND ON ALL LOW VOLTAGE UNDERGROUND CABLE TERMINATIONS.
- ⚡ = Heavy Duty Equalizer (022700-1X)
  - △ = Clearview Lightning Arrester (022585-1X)
  - ⊗ = 1 INCH TEST LINK    ⊗ = TEST NUT
  - △ = UNDO TEST NUT TO FORCE CROSSING ACTIVATION
  - = INSULATED NUT
  - \* = CLOSED DURING WINTER MONTHS



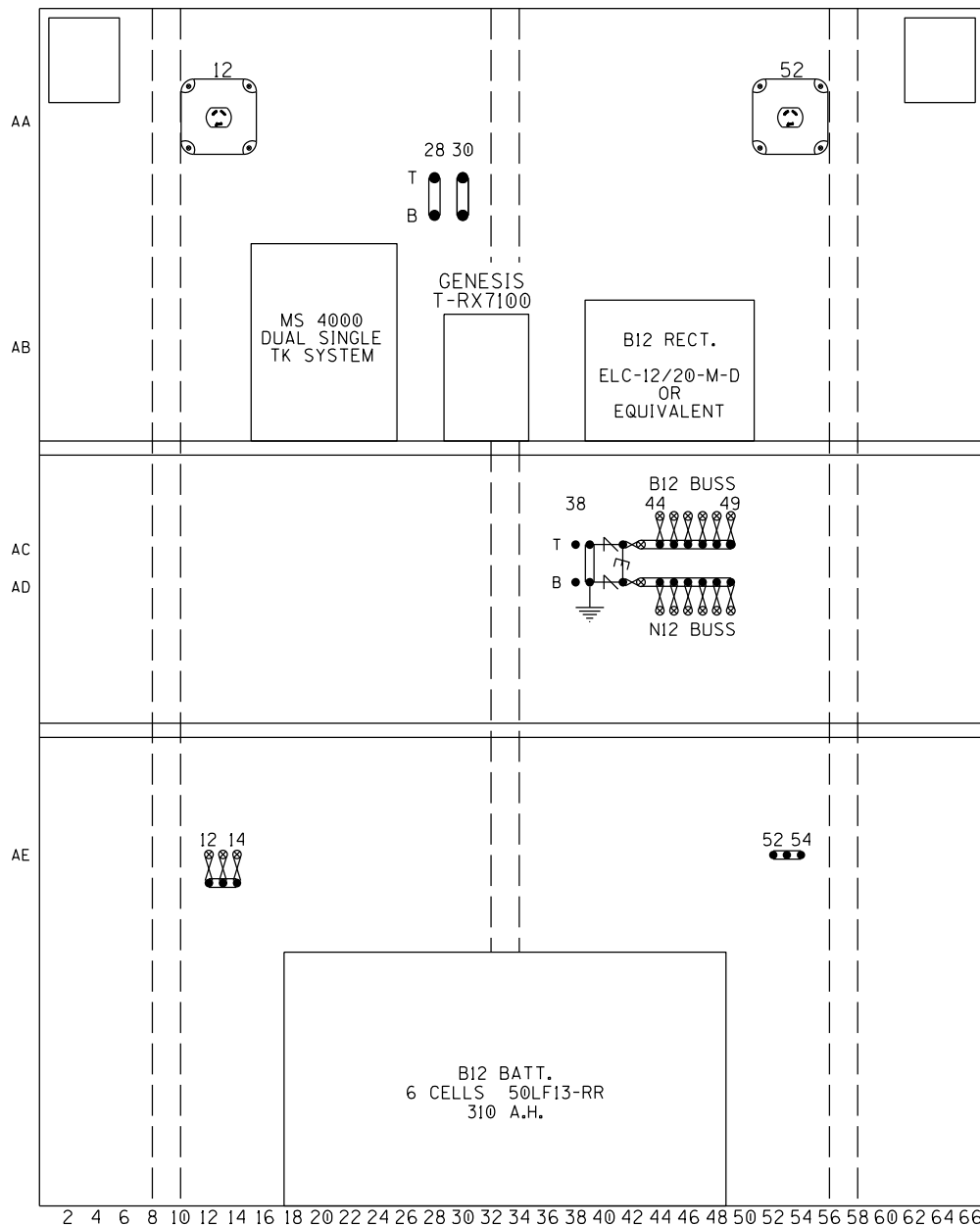
TERMINAL BOARD

**RJ Corman Railroad**  
 P.O. BOX 788 101 RJ CORMAN DR  
 NICHOLASVILLE, KY 40356

DESIGNED BY: MGH	MT. PLEASANT RD.	DATE: 03/20/19
DIGITIZED BY: RJC	STRASBURG, OH	FILE: CL07730.12
CHECKED BY: RWM	M.P. 077.30 D.O.T. 142-594T	SHEET 12
REV 01	CLEVELAND LINE	



SIDE "A"



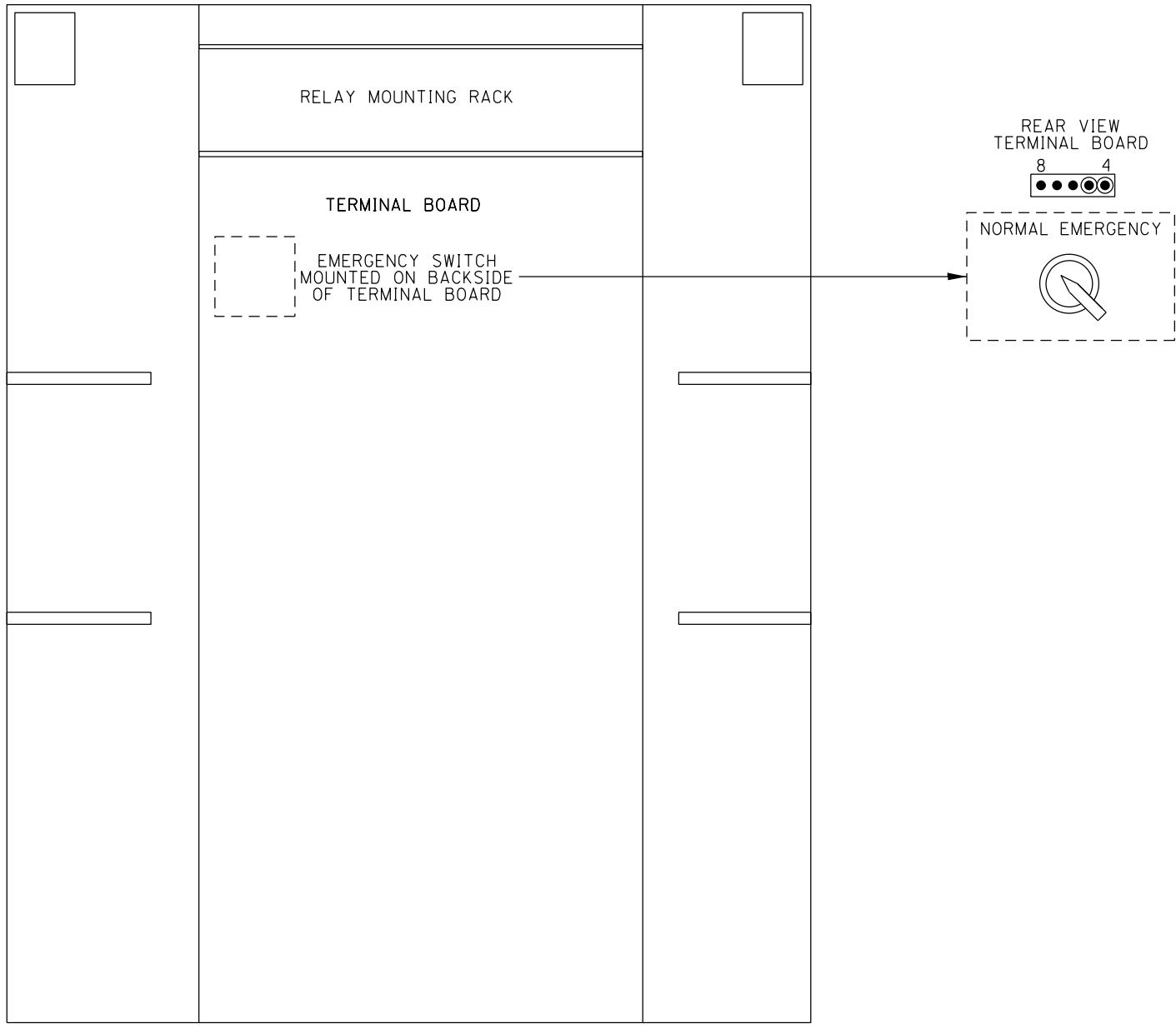
NOTE:  
 NEMA RECEPTACLES ARE L5-30.  
 = 1 INCH TEST LINK    = TEST NUT  
 \* = UNDO TEST NUT TO ACTIVATE XING



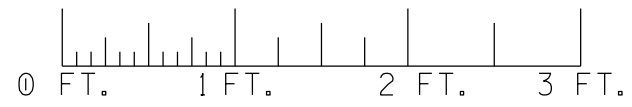
6' X 6' HOUSE - SIDE "A"

<b>RJ Corman Railroad</b> <small>P.O. BOX 788 101 RJ CORMAN DR                  NICHOLASVILLE, KY 40356</small>		
DESIGNED BY: MGH DIGITIZED BY: RJC CHECKED BY: RWM REV 01	MT. PLEASANT RD. STRASBURG, OH M.P. 077.30    D.O.T. 142-594T CLEVELAND LINE	DATE: 03/20/19 FILE: CL07730.13 SHEET 13



SIDE "B"



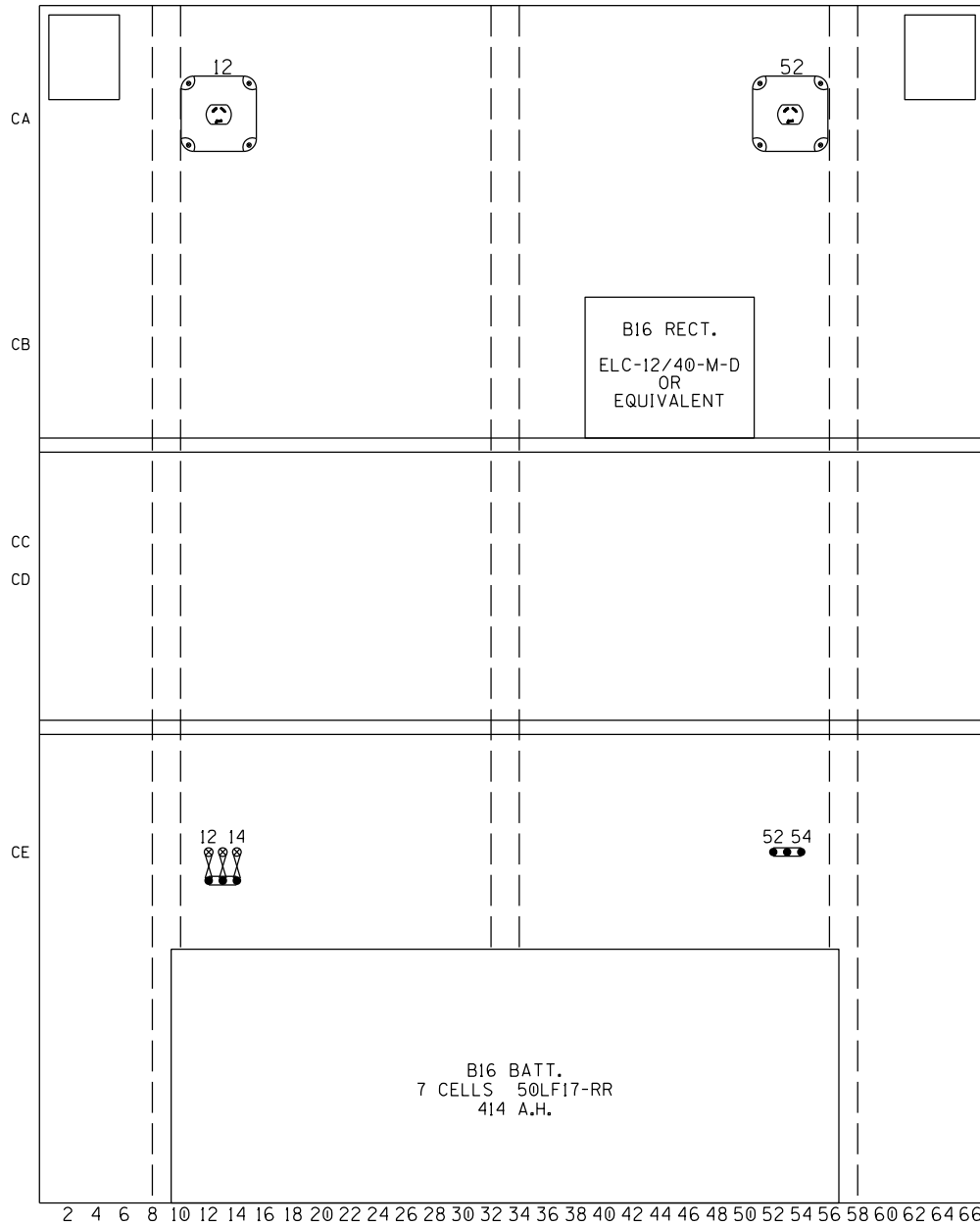
6' X 6' HOUSE - SIDE "B"

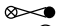



NOTE:  
 ● = INSULATED NUT

 <b>RJ Corman Railroad</b> 		
<small>P.O. BOX 788 101 RJ CORMAN DR                  NICHOLASVILLE, KY 40356</small>		
DESIGNED BY: MGH DIGITIZED BY: RJC CHECKED BY: RWM REV 01	MT. PLEASANT RD. STRASBURG, OH M.P. 077.30 CLEVELAND LINE	DATE: 03/20/19 FILE: CL07730.14 SHEET 14



SIDE "C"



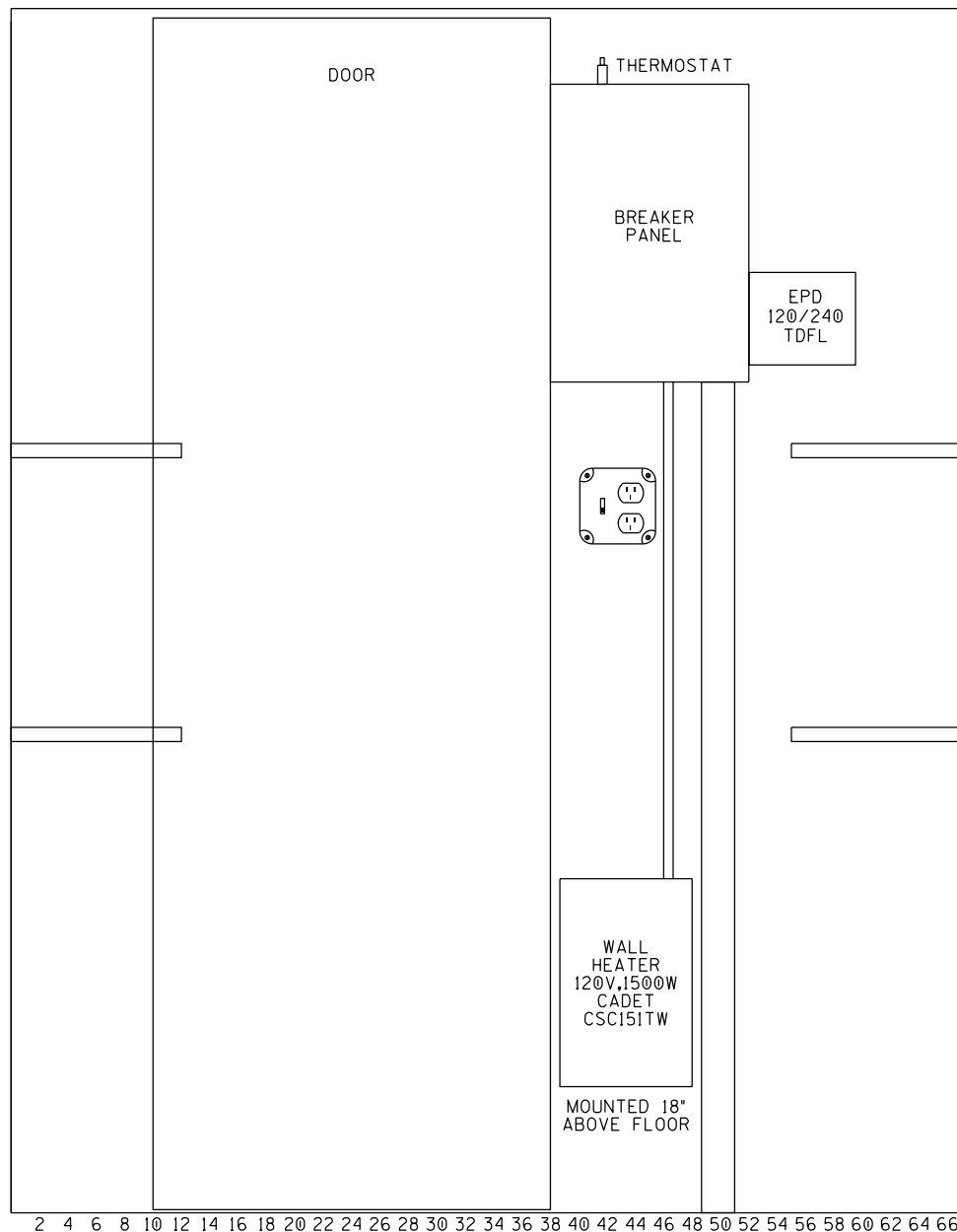
NOTE:  
 NEMA RECEPTACLES ARE L5-30.  
 = 1 INCH TEST LINK  
 = TEST NUT



6' X 6' HOUSE - SIDE "C"

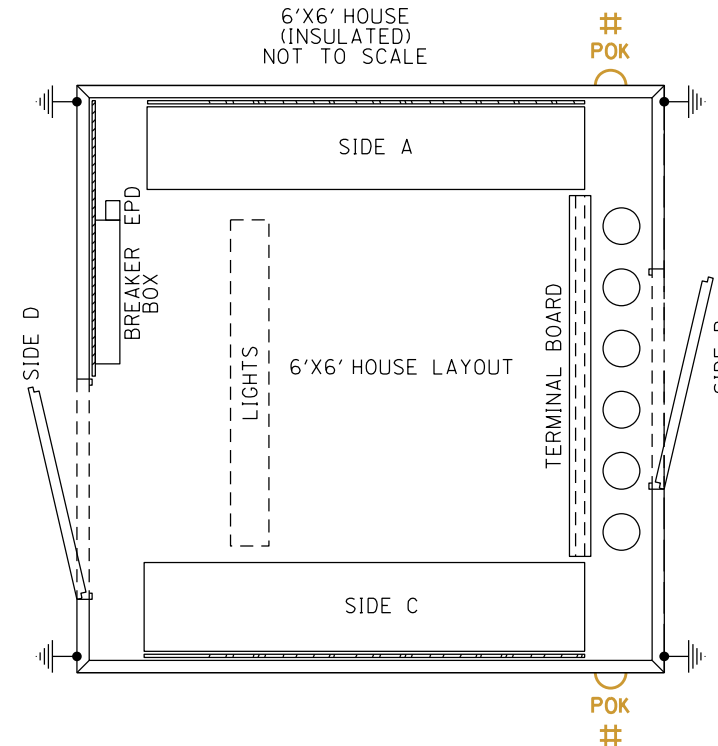
 <b>RJ Corman Railroad</b> <small>P.O. BOX 788 101 RJ CORMAN DR                  NICHOLASVILLE, KY 40356</small>		
DESIGNED BY: MGH DIGITIZED BY: RJC CHECKED BY: RWM REV 01	MT. PLEASANT RD. STRASBURG, OH M.P. 077.30 CLEVELAND LINE	DATE: 03/20/19 FILE: CL07730.15 SHEET 15

SIDE "D"



TOP VIEW\*

6'X6' HOUSE  
(INSULATED)  
NOT TO SCALE



\* = SIDE D TO TO FACE STAIRS

# = FIELD TO VERIFY PLACEMENT OF POK.  
REMOVE LIGHT NOT NEEDED.



6' X 6' HOUSE - SIDE "D" & TOP VIEW

 <b>RJ Corman Railroad</b> <small>P.O. BOX 788 101 RJ CORMAN DR NICHOLASVILLE, KY 40356</small>		
DESIGNED BY: MGH	MT. PLEASANT RD.	
DIGITIZED BY: RJC	STRASBURG, OH	
CHECKED BY: RWM	M.P. 077.30	D.O.T. 142-594T
REV 01	CLEVELAND LINE	
		DATE: 03/20/19
		FILE: CL07730.16
		SHEET 16