



A Limited Liability Holding Company
101 RJ Corman Drive • PO Box 788 • Nicholasville, KY 40340-0788
(859) 881-7521 • Fax: (859) 885-7804 • www.rjcorman.com

6/10/2020

Vendors,

You are invited to submit a bid to provide a crossing materials package for the highway grade crossing listed below:

St Anthony Rd, Coldwater, OH, DOT# 477 034N, as shown on attached signal plans

Enclosed bid package also includes material requirements, as well as bidding guidelines. All bids must be submitted on company letterhead and received by **June 25, 2020 at 5:00 pm EST**. Please submit via email to James.Kelley@RJCorman.com.

If you have any questions regarding this bid request, please do not hesitate to contact me.

Vendor to provide material delivery to 401 Enterprise Drive, Nicholasville, KY 40356.

RJ CORMAN WILL PROVIDE WIRING AND INSTALLATION.

Shipping to begin as soon as possible but no later than 90 days ARO.

Sincerely,
Jimmy Kelley
R.J. Corman Railroad Group
PO Box 788
Nicholasville, KY 40340
O: 859-881-6637
www.rjcorman.com

Scope:

Vendor will provide all necessary equipment, inside and outside, of the shelter per the attached Signal drawing.

General Design Guidelines:

1. Material shall comply with all applicable FRA and state regulations and follow current AREMA C&S Manual for Recommended Practices.
2. All material provided shall be new.

Material Requirements:

1. Bungalow should be Modern Manufacturing 6x6 Aluminum – RJC66B-A
2. Train detection will be provided by Siemens MS-4000 Dual Single-Track Redundant System with user reference manual.
3. Flasher control will be provided by the Siemens 20 amp Crossing Controller. Will need to include Siemens rectifier diodes (8000-8A299-0006) and surge protection will be done at the through hole terminal board. *See plans for details.*
4. Relays will be Siemens ST Style “B” (if needed)
5. Chargers w/ HBL2321 twist lock plugs – NRS ELC 12/20 M-D or 12/40 M-D as applicable
6. Batteries – Sealed, Maintenance Free, Lead Acid Batteries
7. Emergency Switch Box Assembly – L&W 2 Position – 3A900436
8. Gate mechanisms to use *WCH 3597-131-MI. Shall include the following as designed per mast:*
 - a. 19' - 32' GATE ARMS W/ LED LIGHTS
 - b. 5" BASE (DOUBLE JUNCTION BOX) & 16'5" MAST
 - c. 2-WAY LED FLASHER ASSEMBLIES
 - d. COUNTERWEIGHT KIT
 - e. CROSSBUCK AND ASSOCIATED MOUNTING HARDWARE
 - f. HIGH WIND BRACKET
 - g. ELECTRONIC BELL (if needed) to be Electronic Loud Tone without sensor
 - h. GATE HEATERS (WCH) 24VDC
9. Foundations to be galvanized helical by Dixie Precast.
10. Berm Wall for Bungalow to be Dixie Precast steel wall 4' Height X 5' X 10'X 5'. *See plans for details.*
11. Berm Wall for signals to be Dixie Precast steel wall 4' Height X 5' X 5'X 5'. *See plans for details.*
12. Flashing light signals to be 12" LED heads (Miller Felpax) with aluminum visors and backgrounds.
13. Track Enhancer Panel – Siemens PN NYK:8000800490001
14. Insulated joints 2 (4 pair) 112RE. *See plans for details.*
15. Vendor to provide all field equipment, including track wire, shunts, rail bonding material, etc.
16. Jointed Rail to be Bonded within approaches please include all associated field materials required.

Performance & Bidding Guidelines:

Bids should be detailed in the following format:

LOCATION: _____

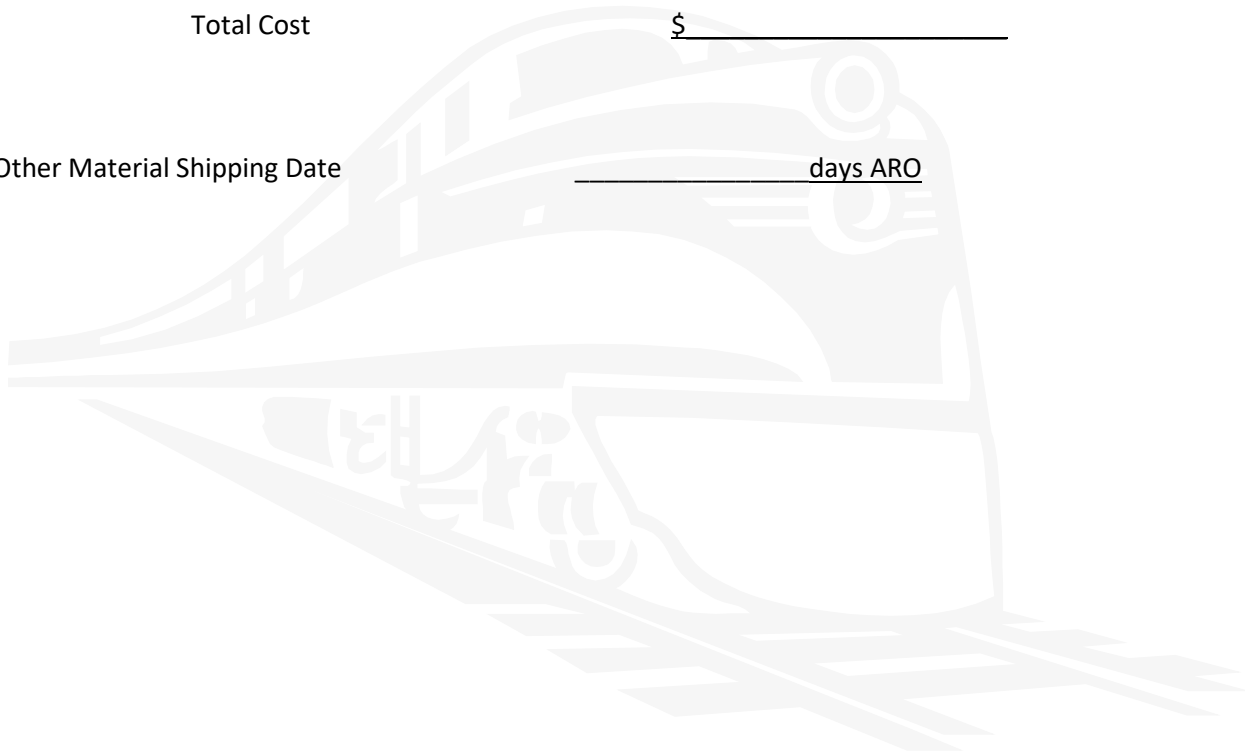
Material Cost \$ _____

Estimated Freight/Shipping Cost \$ _____

Estimated Taxes Cost \$ _____

Total Cost \$ _____

Case & Other Material Shipping Date _____ days ARO



SH. NO.	CONTENTS	REV
NX1	INDEX SHEET	1
1	TRACK PLAN	1
2	PROFILE	1
3	TRACK LAYOUT	1
4	LOAD CENTER WIRING	1
5	DC POWER	1
6	PO LIGHT CIRCUITS	1
7	MS 4000 GCP	1
8	TRACK CONNECTIONS	1
9	CROSSING CONTROLLER HOOK-UP	1
10	GATE & FLASHER CIRCUITS SIGNAL "A"	1
11	GATE & FLASHER CIRCUITS SIGNAL "B"	1
12	TERMINAL BOARD FRONT LAYOUT	1
13	TERMINAL BOARD FRONT LAYOUT	1
14	TERMINAL BOARD REAR LAYOUT	1
15	TERMINAL BOARD REAR LAYOUT	1
16	TOP VIEW	1
17	HOUSE SIDE A LAYOUT	1
18	HOUSE SIDE B LAYOUT	1
19	HOUSE SIDE C LAYOUT	1
20	HOUSE SIDE D LAYOUT	1



REVISIONS

1	01-24-20	MGH	RJC	RWM
NEW XING AT ST. ANTHONY RD MS4000				
PROJECT: 19WL-SIGSTANTHO				
IN SERVICE: XX-XX-XX				
PER: XXX			XXX	XXX

Ohio Utilities Protection Service

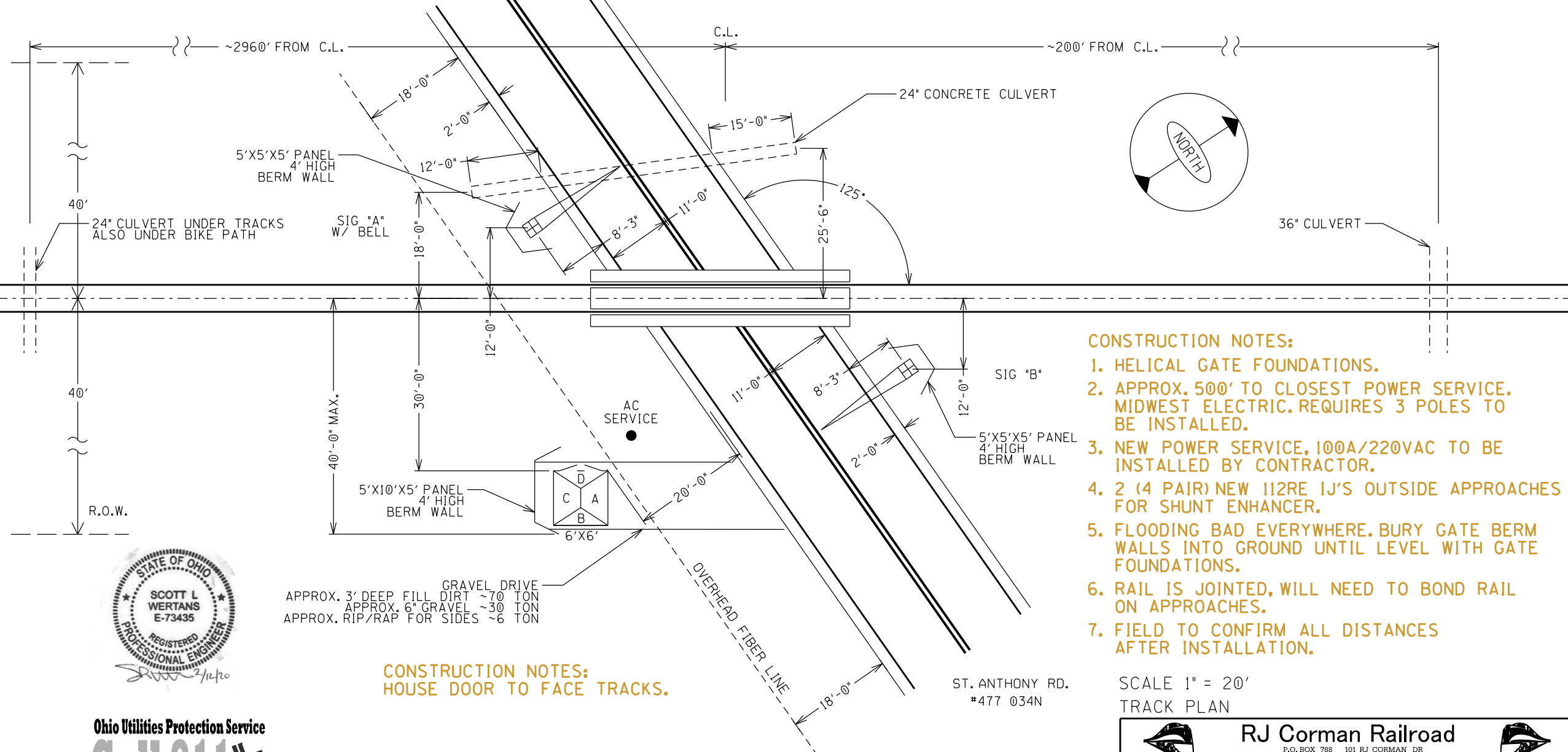


INDEX SHEET

 RJ Corman Railroad <small>P.O. BOX 788 101 RJ CORMAN DR NICHOLASVILLE, KY 40356</small>		
DESIGNED BY: MGH	ST. ANTHONY RD.	DATE: 01/24/20
DIGITIZED BY: RJC	COLDWATER, OH	FILE: ST12312.NX1
CHECKED BY: RWM	M.P. 123.12 D.O.T. 477-034N	SHEET NX1
REV 01	ST. MARYS SUBDIVISION	

TO MUNCIE EAST YARD
WEST
M.P. INCREASING

TO SOUTH LIMA
EAST
M.P. DECREASING



CONSTRUCTION NOTES:

1. HELICAL GATE FOUNDATIONS.
2. APPROX. 500' TO CLOSEST POWER SERVICE. MIDWEST ELECTRIC. REQUIRES 3 POLES TO BE INSTALLED.
3. NEW POWER SERVICE, 100A/220VAC TO BE INSTALLED BY CONTRACTOR.
4. 2 (4 PAIR) NEW 112RE 1J'S OUTSIDE APPROACHES FOR SHUNT ENHANCER.
5. FLOODING BAD EVERYWHERE. BURY GATE BERM WALLS INTO GROUND UNTIL LEVEL WITH GATE FOUNDATIONS.
6. RAIL IS JOINTED, WILL NEED TO BOND RAIL ON APPROACHES.
7. FIELD TO CONFIRM ALL DISTANCES AFTER INSTALLATION.

**CONSTRUCTION NOTES:
HOUSE DOOR TO FACE TRACKS.**

SCALE 1" = 20'
TRACK PLAN



Ohio Utilities Protection Service
Call 811
before you dig

RJ Corman Railroad		
<small>P.O. BOX 788 101 RJ CORMAN DR NICHOLASVILLE, KY 40356</small>		
DESIGNED BY: MGH	ST. ANTHONY RD.	
DIGITIZED BY: RJC	COLDWATER, OH	
CHECKED BY: RWM	M.P. 123.12	D.O.T. 477-034N
REV 01	ST. MARYS SUBDIVISION	
	DATE: 01/24/20	FILE: ST12312.01
		SHEET 01

TO MUNCIE EAST YARD

TO SOUTH LIMA

1541'
TO NEAREST
GCP WIRES

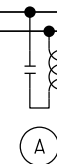
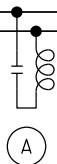
1541'
TO NEAREST
GCP WIRES

FLGS
W/BELL

MS 4000

645 HZ
8.3 KHZ

FLGS



63'
TO ♀

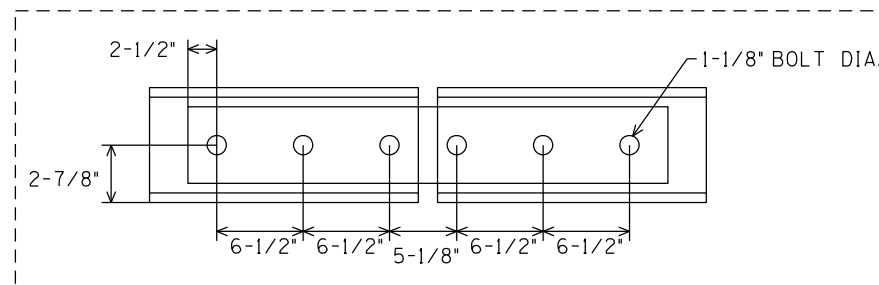
0'
♀

63'
TO ♀

CONSTRUCTION NOTES:

1. NEW IJ'S OUTSIDE APPROACH ARE FOR SHUNT ENHANCER. IJ'S TO BE INSTALLED ON OPPOSITE RAIL AND BE I12RE.

IJ MEASUREMENTS FOR REFERENCE:



(A) - NBS-1 62775-3497 (645HZ)

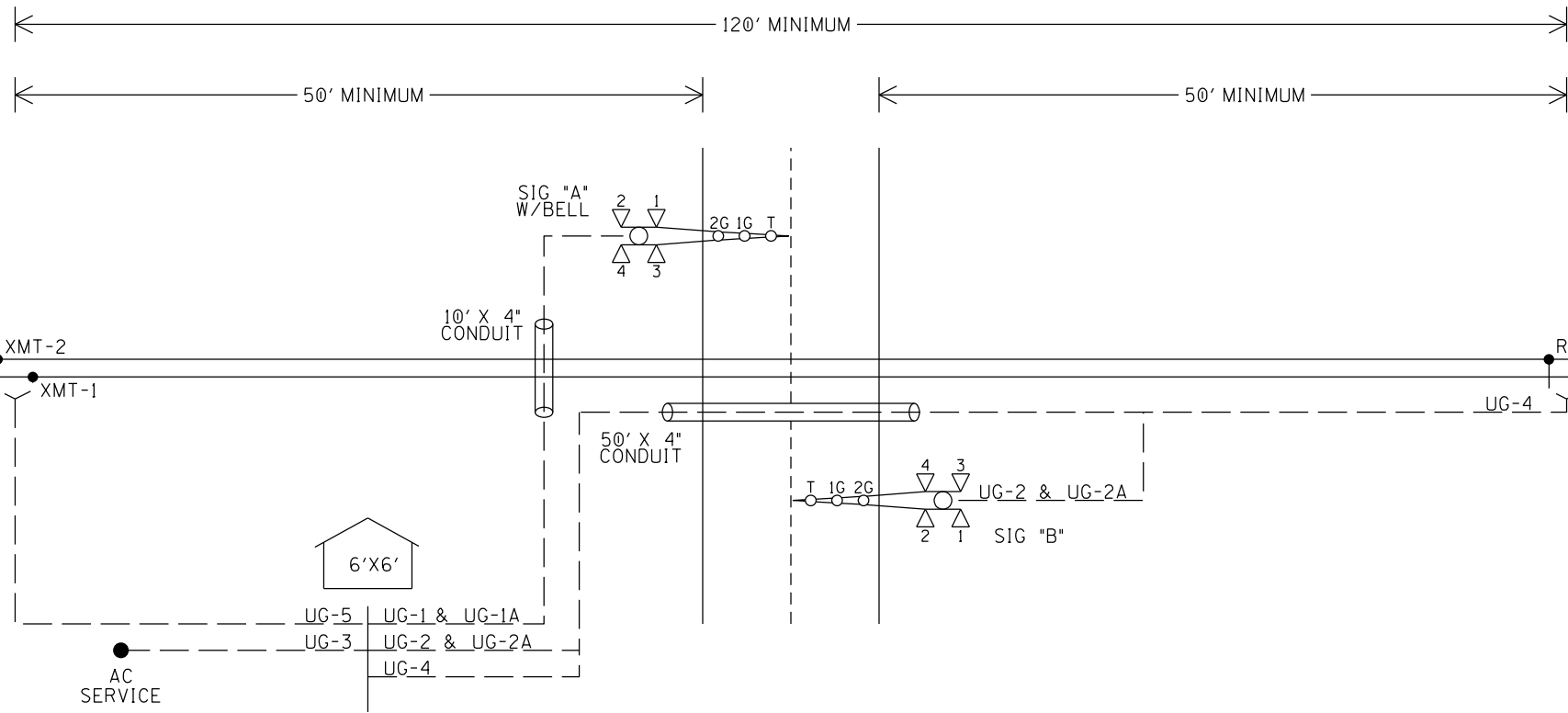
Ohio Utilities Protection Service
Call 811
before you dig



APPROACH CALCULATION INFORMATION	
STANDARD MINIMUM WARNING TIME IN SECONDS	25
ROADWAY GATE TIME IN SECONDS	04
CLEARANCE TIME IN SECONDS	01
DOT TRAFFIC LIGHT SIMULTANEOUS PREEMPT IN SECS	00
DESIGNED WARNING TIME FOR TRAINS AT T.T. SPEED	30
DOT TRAFFIC LIGHT ADVANCE PREEMPT IN SECS	00
CONTROL EQUIPMENT REACTION TIME IN SECONDS	05
DESIGNED DETECTION TIME FOR TRAINS AT T.T. SPEED	35
TIME TABLE MAXIMUM TRAIN SPEED IN MILE PER HOUR	25
BUFFER IN MILE PER HOUR	05
APPROACH SPEED FR CROSSING CALCULATION (AS)	30
APPROACH DISTANCE FORMULA: TTxASx1.467	1.467
APPROACH DISTANCE TO ISLAND EDGE IN FEET	1541'

PROFILE

	RJ Corman Railroad <small>P.O. BOX 788 101 RJ CORMAN DR NICHOLASVILLE, KY 40356</small>		
	DESIGNED BY: MGH DIGITIZED BY: RJC CHECKED BY: RWM REV 01	ST. ANTHONY RD. COLDWATER, OH M.P. 123.12 D.O.T. 477-034N ST. MARYS SUBDIVISION	



UG-1-7CUG #6	UG-2-7CUG #6	UG-3-3CUG #2 W/#6 GND	UG-4-TW, PR. #6
AEC2-4 ACOM AEB1-3 ABX-B12 ABX-N12 SPARE 1 SPARE 2	BEC2-4 BCOM BEB1-3 BXB-B12 BXB-N12 SPARE 1 SPARE 2	L1 L2 NEUTRAL GROUND	RCV-1 RCV-2
UG-1A-7CUG #14	UG-2A-7CUG #14		UG-5-TW, PR. #6
AGC ABELL A-BGP ABX24 ANX24 SPARE 1 SPARE 2	BGC A-BGP GP BBX24 BNX24 SPARE 1 SPARE 2		XMT-1 XMT-2



Ohio Utilities Protection Service
Call 811
before you dig

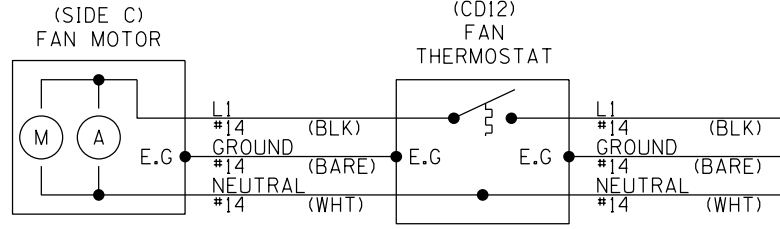
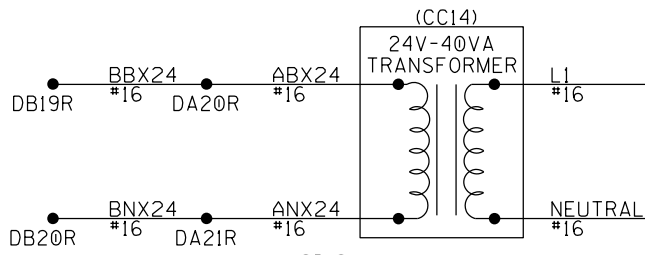
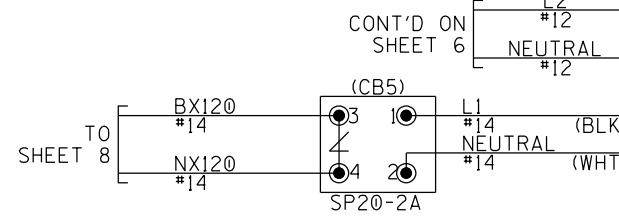
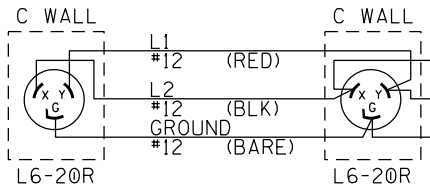
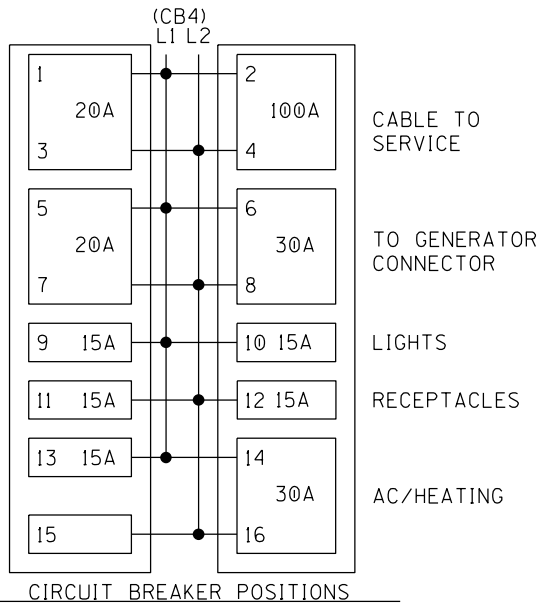
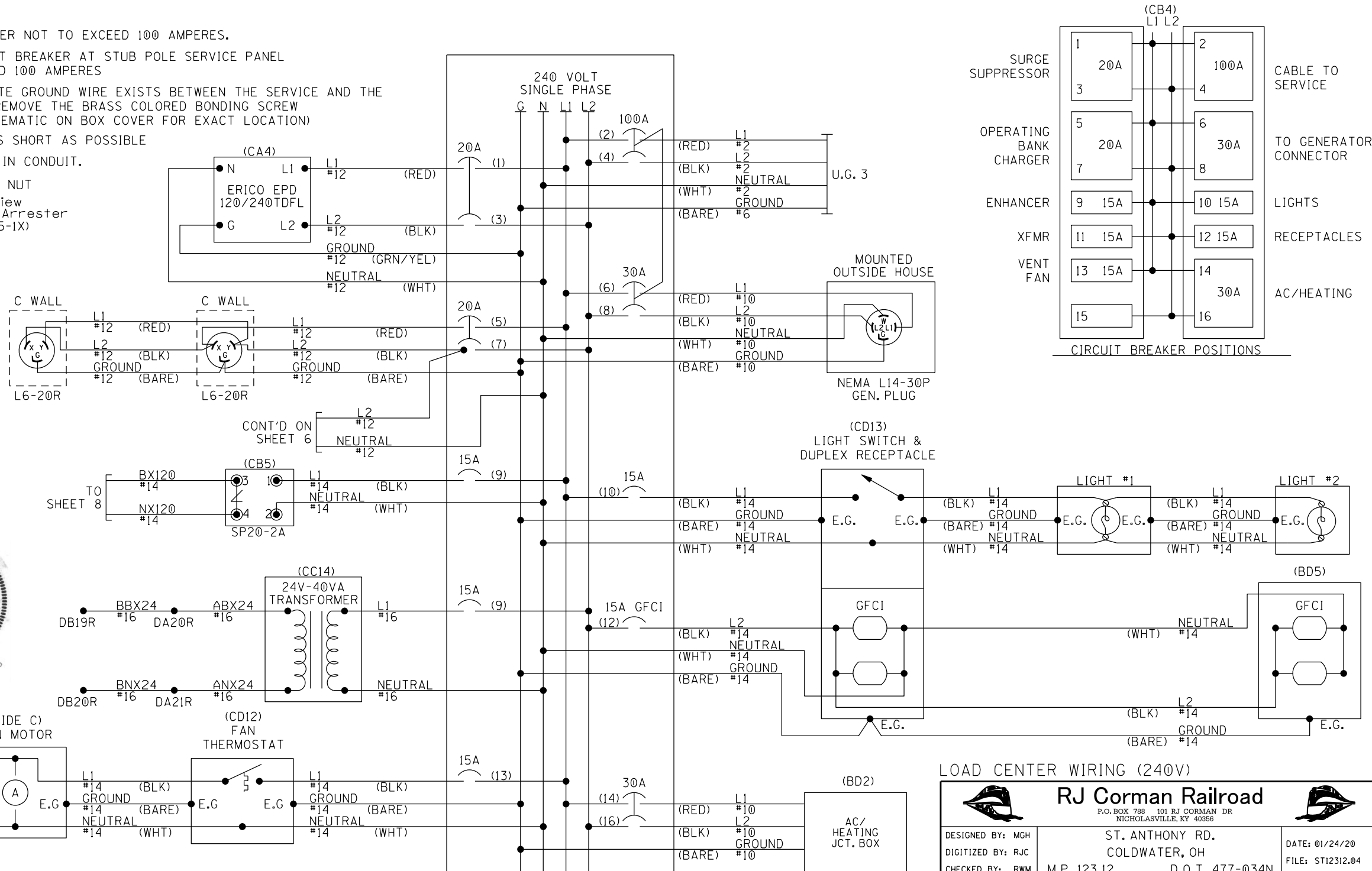
TRACK LAYOUT

		RJ Corman Railroad P.O. BOX 788 101 RJ CORMAN DR NICHOLASVILLE, KY 40356
DESIGNED BY: MGH	ST. ANTHONY RD. COLDWATER, OH	
DIGITIZED BY: RJC	M.P. 123.12	D.O.T. 477-034N
CHECKED BY: RWM	ST. MARYS SUBDIVISION	
REV 01	DATE: 01/24/20 FILE: ST12312.03 SHEET 03	

NOTES

- 1) CIRCUIT BREAKER NOT TO EXCEED 100 AMPERES.
- 2) FEEDER CIRCUIT BREAKER AT STUB POLE SERVICE PANEL NOT TO EXCEED 100 AMPERES
- 3) WHERE SEPARATE GROUND WIRE EXISTS BETWEEN THE SERVICE AND THE LOAD CENTER, REMOVE THE BRASS COLORED BONDING SCREW (REFER TO SCHEMATIC ON BOX COVER FOR EXACT LOCATION)
- 4) KEEP LEADS AS SHORT AS POSSIBLE
- 5) ALL AC WIRES IN CONDUIT.

● = INSULATED NUT
 Clearview
 ∠ = Lightning Arrester (022585-1X)



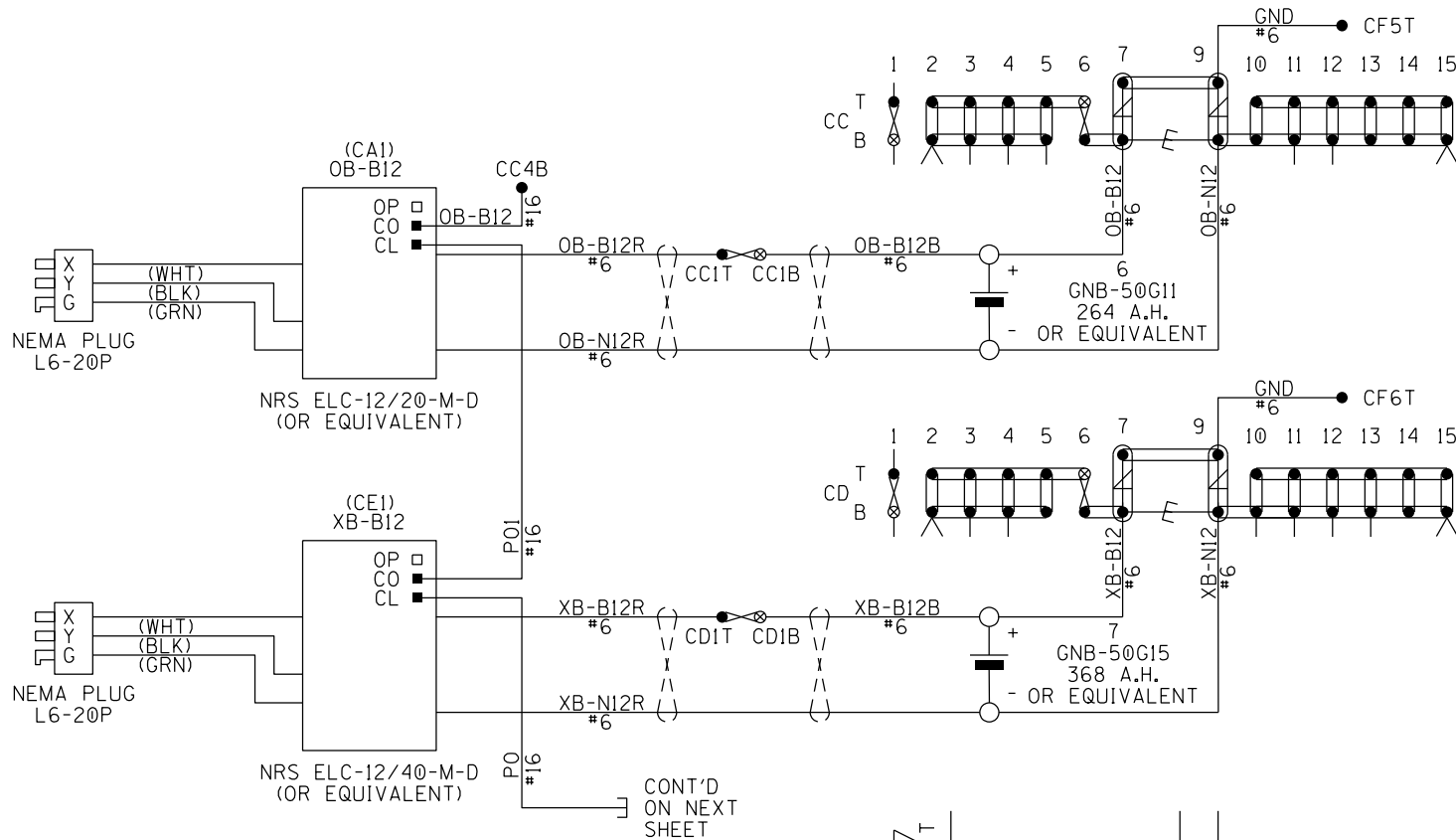
LOAD CENTER WIRING (240V)

RJ Corman Railroad
 P.O. BOX 788 101 RJ CORMAN DR
 NICHOLASVILLE, KY 40356

ST. ANTHONY RD.
 COLDWATER, OH
 M.P. 123.12 D.O.T. 477-034N
 ST. MARYS SUBDIVISION

DESIGNED BY: MGH
 DIGITIZED BY: RJC
 CHECKED BY: RWM
 REV 01

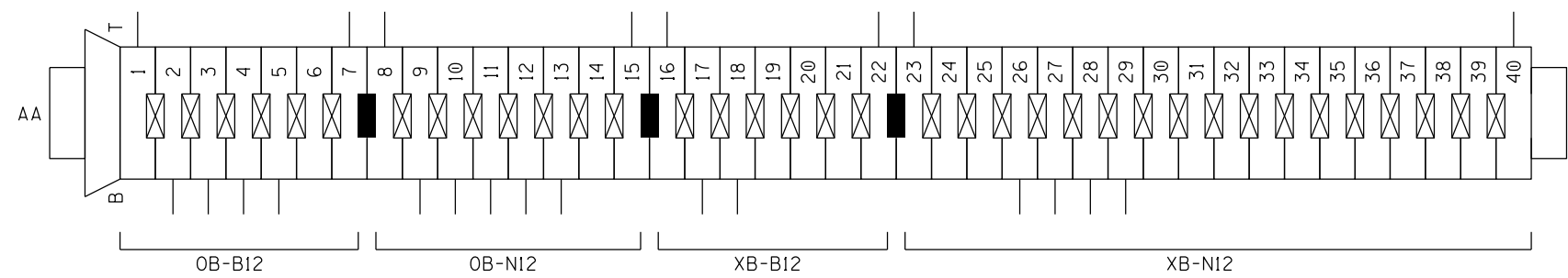
DATE: 01/24/20
 FILE: ST12312.04
 SHEET 04



- AA1T □ OB-B12 ● CC2B
- AA7T □ OB-B12 ● CC2B
- AA8T □ OB-N12 ● CC15B
- AA15T □ OB-N12 ● CC15B

- AA16T □ XB-B12 ● CD2B
- AA22T □ XB-B12 ● CD2B
- AA23T □ XB-N12 ● CD15B
- AA40T □ XB-N12 ● CD15B

- DA27R ● AXB-B12 ● CD4B
- DB27R ● BXB-B12 ● CD3B
- DA26R ● AXB-N12 ● CD10B
- DB26R ● BXB-N12 ● CD11B
- DA29R ● ACOM ● CD12B
- DA29R ● ACOM-A ● DD7T
- DB29R ● BCOM ● CD13B



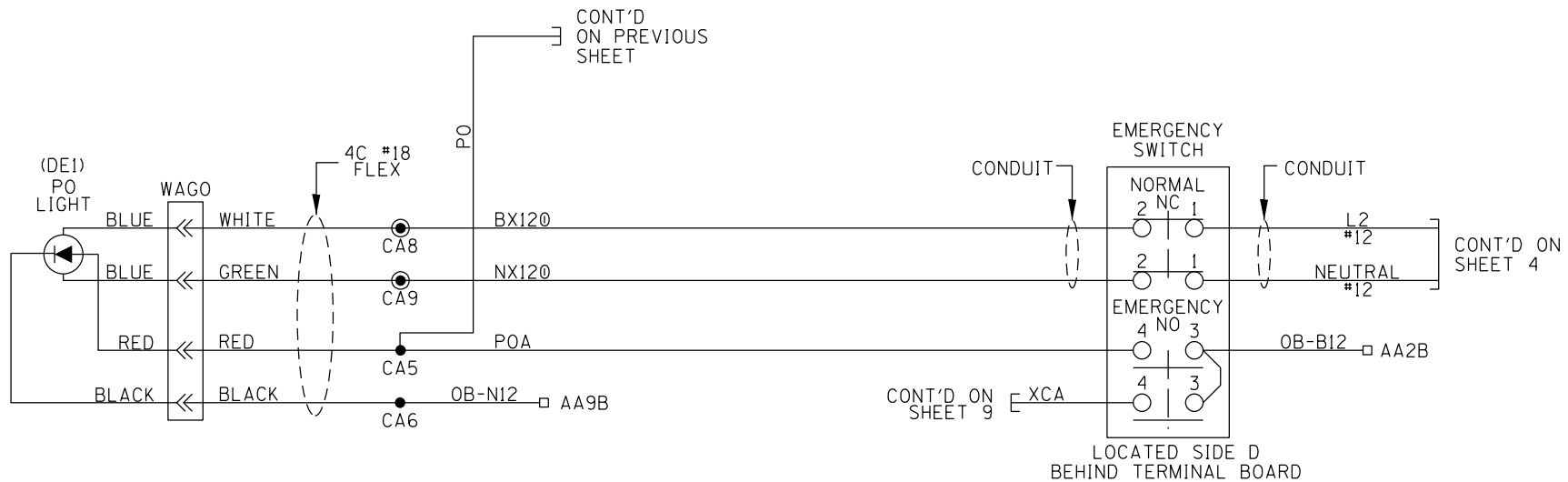
NOTES:
 ALL WIRING TO BE #10AWG UNLESS NOTED OTHERWISE.
 ● = 2-3/8" BLOCK
 ⊗ = 1 INCH TEST LINK
 < > = TWIST ⊗ = TEST NUT
 ● = INSULATED NUT
 = Heavy Duty Equalizer (022700-1X)
 < = Lightning Arrester (022585-1X)

- # WAGO TERMINAL 2 COND. 24-10AWG (WAGO 282-601)
- ⊗ DENOTES WAGO JUMPER WAGO 282-402
- DENOTES WAGO SEPARATOR WAGO 282-337
- ▭ DENOTES WAGO END PLATE WAGO 282-317
- ▭ DENOTES WAGO END STOP WAGO 249-117



DC POWER

<p>RJ Corman Railroad P.O. BOX 788 101 RJ CORMAN DR NICHOLASVILLE, KY 40356</p>		
DESIGNED BY: MGH DIGITIZED BY: RJC CHECKED BY: RWM REV 01	ST. ANTHONY RD. COLDWATER, OH M.P. 123.12 D.O.T. 477-034N ST. MARYS SUBDIVISION	DATE: 01/24/20 FILE: ST12312.05 SHEET 05



NOTES:
 1. ALL WIRING TO BE #16AWG
 UNLESS NOTED OTHERWISE.

● = INSULATED NUT



PO LIGHT CIRCUIT

 RJ Corman Railroad <small>P.O. BOX 788 101 RJ CORMAN DR NICHOLASVILLE, KY 40356</small> 		
DESIGNED BY: MGH DIGITIZED BY: RJC CHECKED BY: RWM REV 01	ST. ANTHONY RD. COLDWATER, OH M.P. 123.12 D.O.T. 477-034N ST. MARYS SUBDIVISION	DATE: 01/24/20 FILE: ST12312.06 SHEET 06

MAIN PROGRAM MENU

**	PARAMETER	VALUE
1	TEMPLATE	↓ MTF-MS MOTION SENSOR
1A	SET TEMPLATE DEFAULTS	(YES ON INITIAL SETUP)
MS 4000 CONFIGURATION		
2	APPR FREQUENCY	↓ 645 HZ
3	APPR TRANSMIT LEVEL	# ☆ HIGH
4	UNI/BI/SEM-BIDIRNL	↓ BIDIRNL
5	DIRECTIONALLY WIRED	↓ ☆ NO
6	MS PICKUP DELAY	↓ ☆ 15 SEC
7	UAX USED	↓ YES
7A	* PRIME UAX PICKUP	↓ ☆ 5 SEC
8	ISLAND USED	↓ ☆ INTERNAL
8A	* ISL FREQUENCY	↓ 8.3 KHZ
8B	* ISL PICKUP DELAY	↓ (2s+) 3 SECONDS
9	IN 1.1	↓ UAX
10	IN 1.2	↓ NOT USED
11	PRIME MS/GCP MODE	↓ PRED
11A	* PRIME WARNING TIME	↓ 30 SEC
ADVANCED		
12	POSITIVE START	↓ ☆ OFF
13	SUDDEN SHUNT DET USED	↓ ☆ NO
14	LOW EZ DET USED	↓ ☆ NO
15	MS SENSITIVITY LEVEL	# ☆ 36
16	COMPENSATION LEVEL	# ☆ 1300
17	LOW EX ADJUSTMENT	# ☆ 39
18	INBOUND PS SENSITIVITY	# ☆ HIGH
19	SPEED LIMITING USED	# ☆ YES
20	OUTBOUND FALSE ACT LVL	# ☆ NORMAL
OTHER		
21	OOS TIMEOUT	# ☆ 1 HRS
22	DAYLIGHT SAVINGS TIME	# ☆ ON
23	EZ/EX LOGGING	# ☆ CHANGE
24	EZ/EX POINT CHANGE	# ☆ 3
25	ATCS SITE ID	↓ ☆ 762010010016

CONTINUE MAIN PROGRAM MENU

**	PARAMETER	VALUE
26	LOCATION	
26A	* DOT NUMBER	# 477 034N
26B	* MILE POST	# 123.12
26C	* SITE NAME	# ST ANTHONY RD

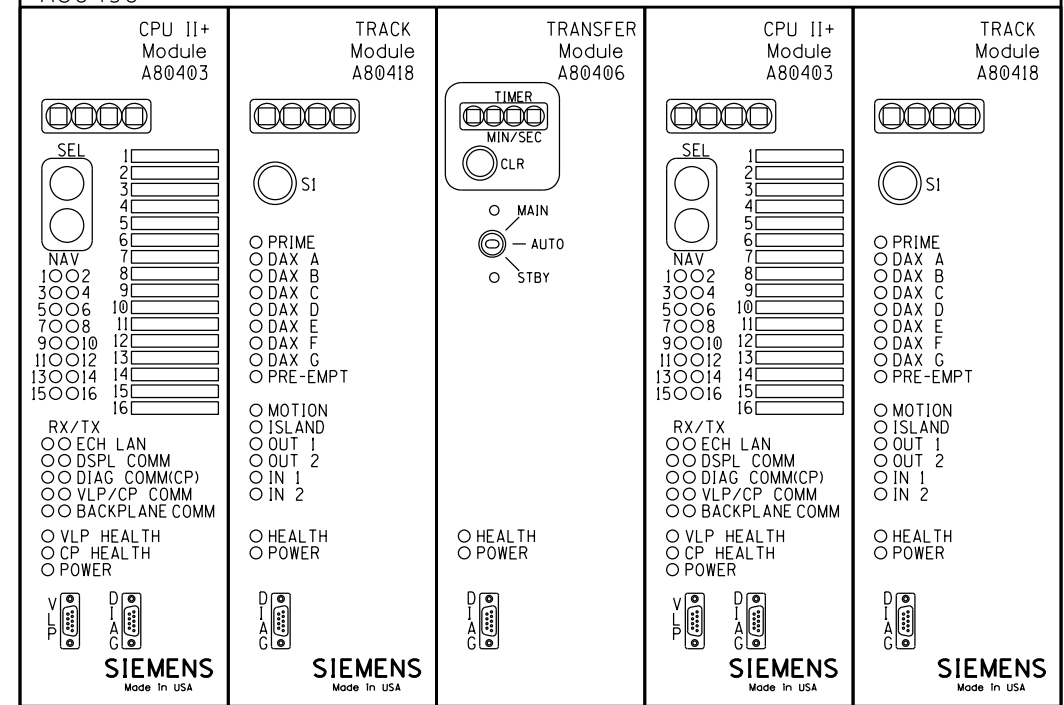
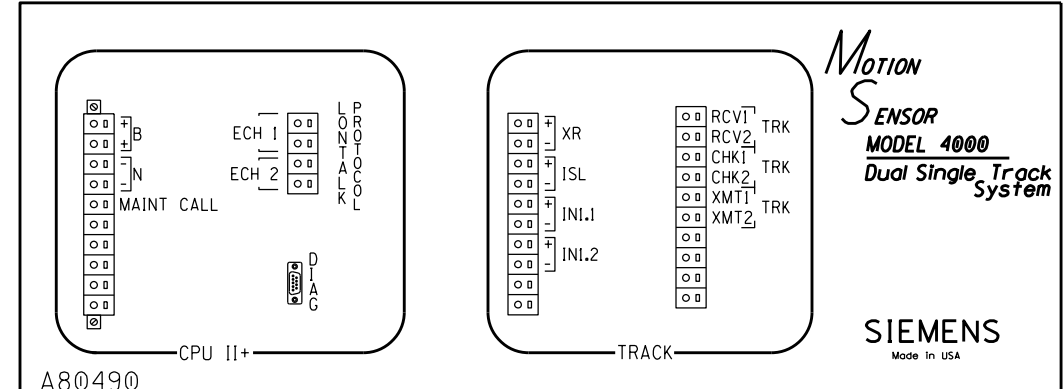
MCF AND OCCN

MCF NAME	GCP-T6X-02-9.mcf
OCCN	7A87DD75



NOTES:

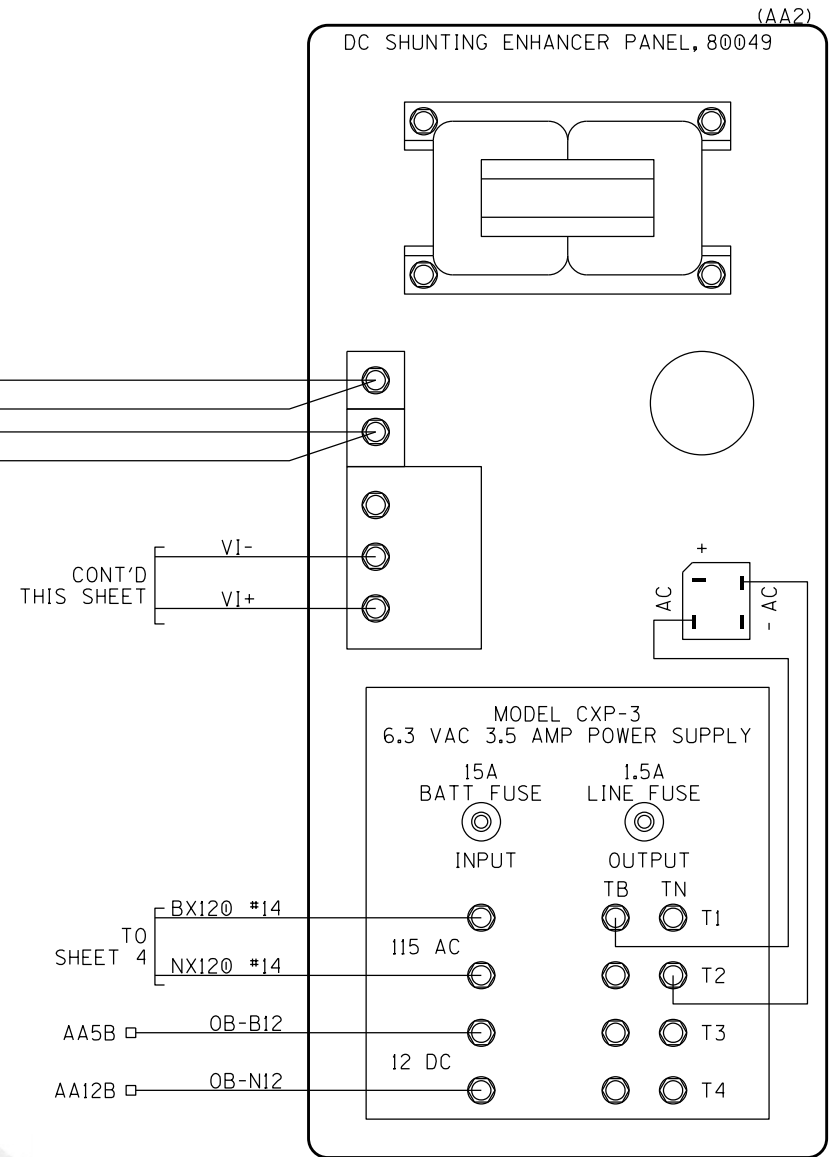
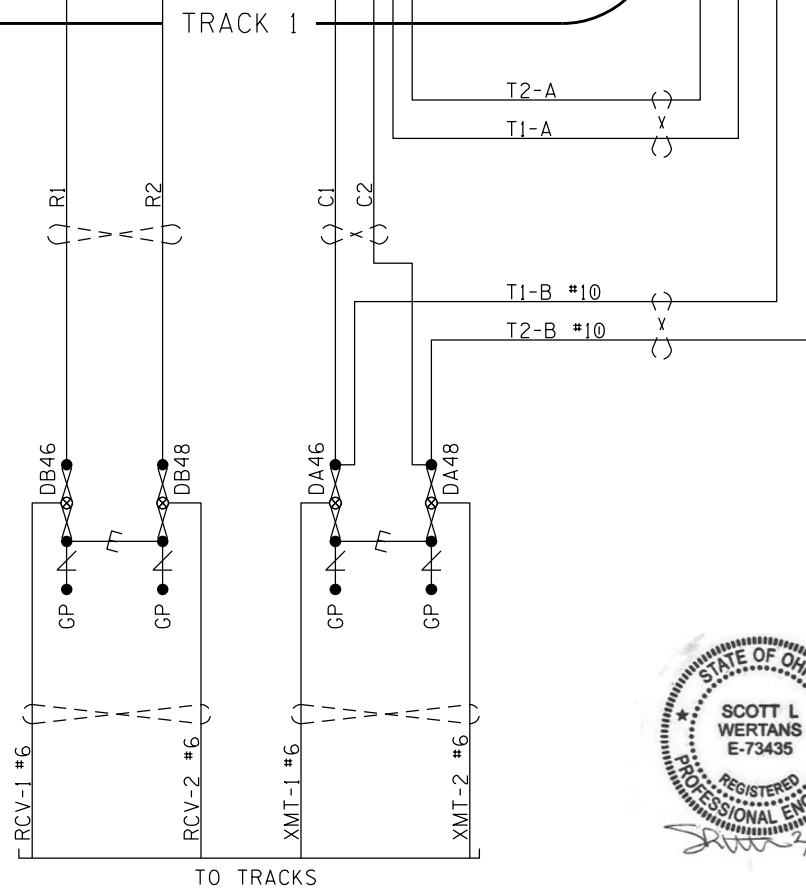
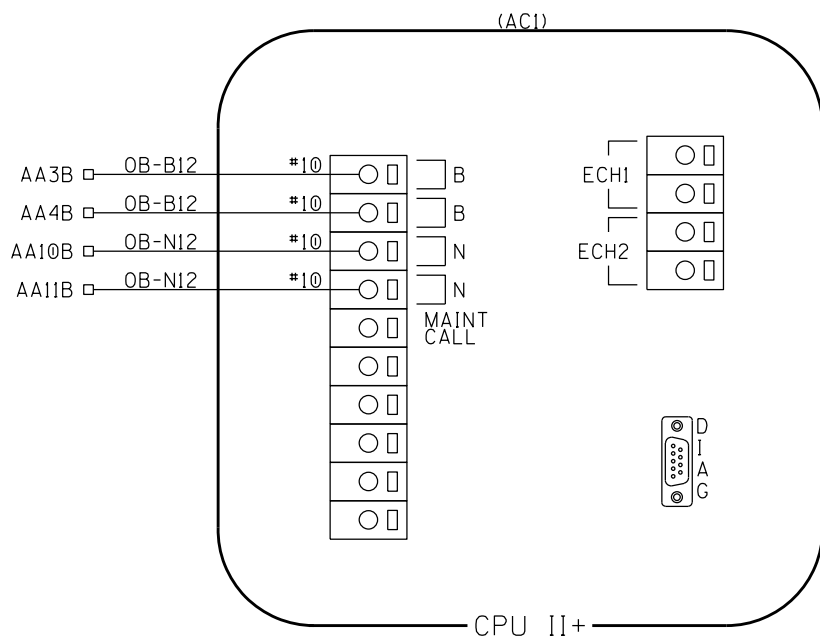
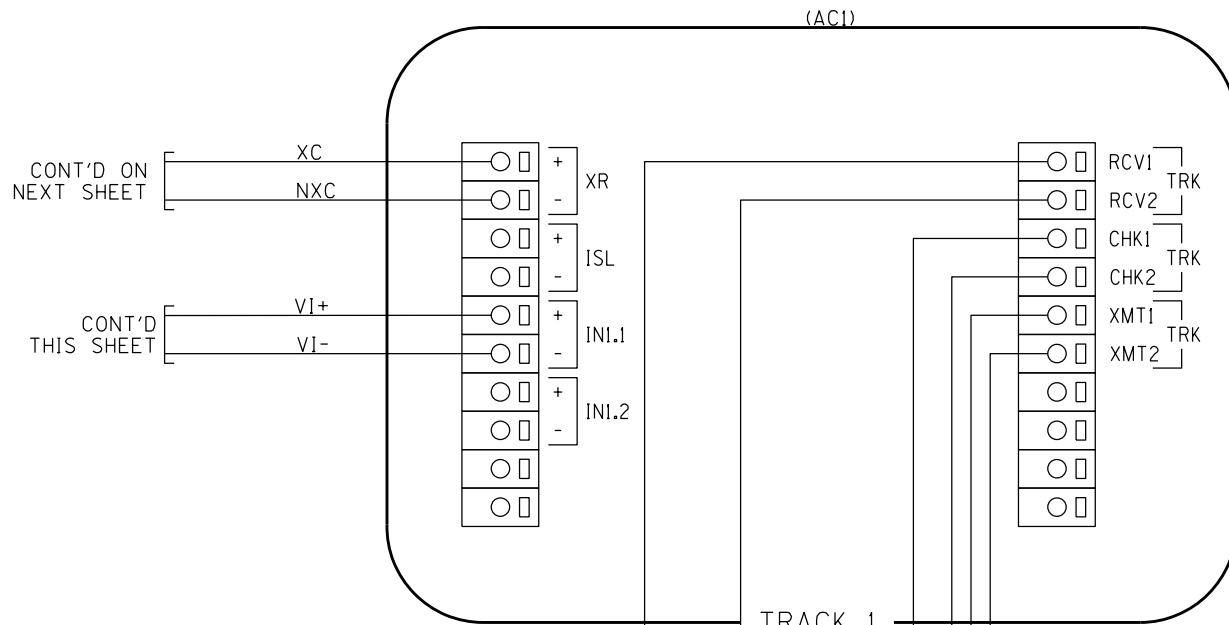
- * AVAILABLE WHEN PRIOR PARAMETER SELECTED
- # SET BY FIELD AS REQUIRED
- ☆ DEFAULT SETTING
- ↓ IMPACTS OCCN
- ** STEP SEQUENCE WHEN USING DIAGNOSTIC TERMINAL (DT) VER. 5.7.3 TO SET PROGRAM PARAMETERS. ALPHA NUMERIC STEPS ARE SUB MENUS OF PREVIOUS STEP.



(AC1)

MS 4000 GCP

RJ Corman Railroad		
P.O. BOX 788 101 RJ CORMAN DR NICHOLASVILLE, KY 40356		
DESIGNED BY: MGH DIGITIZED BY: RJC CHECKED BY: RWM REV 01	ST. ANTHONY RD. COLDWATER, OH M.P. 123.12 D.O.T. 477-034N ST. MARYS SUBDIVISION	DATE: 01/24/20 FILE: ST12312.07 SHEET 07



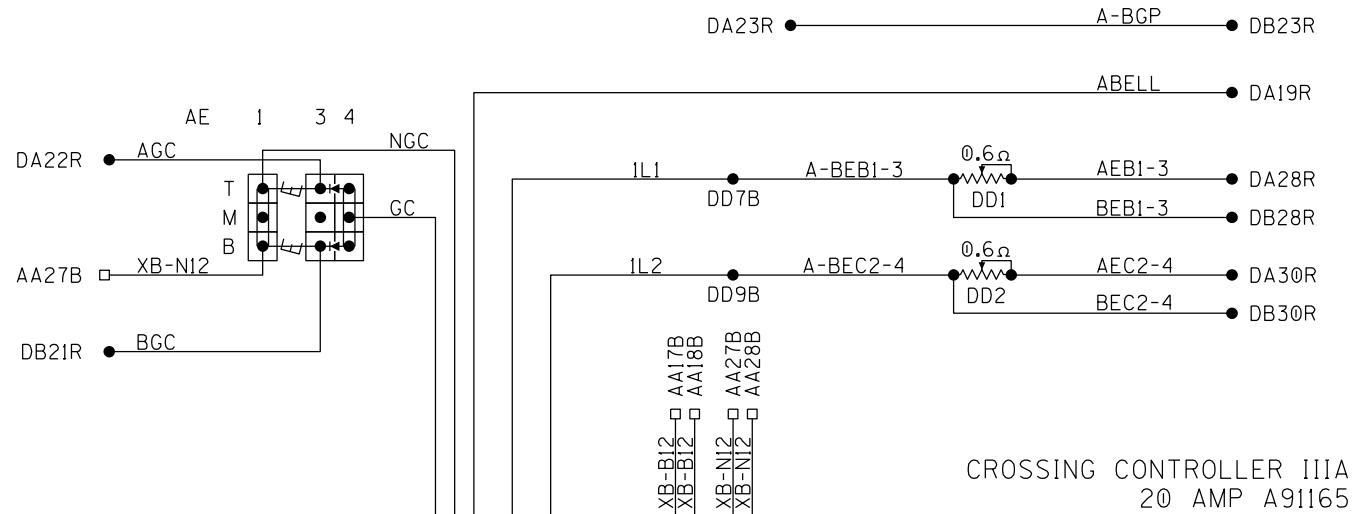
NOTES:
ALL WIRING TO BE #16AWG
UNLESS NOTED OTHERWISE.

= Heavy Duty Equalizer (022700-1X)
 = Clearview Lightning Arrester (022585-1X)
 = TEST LINK
 = TEST NUT
 = TWIST

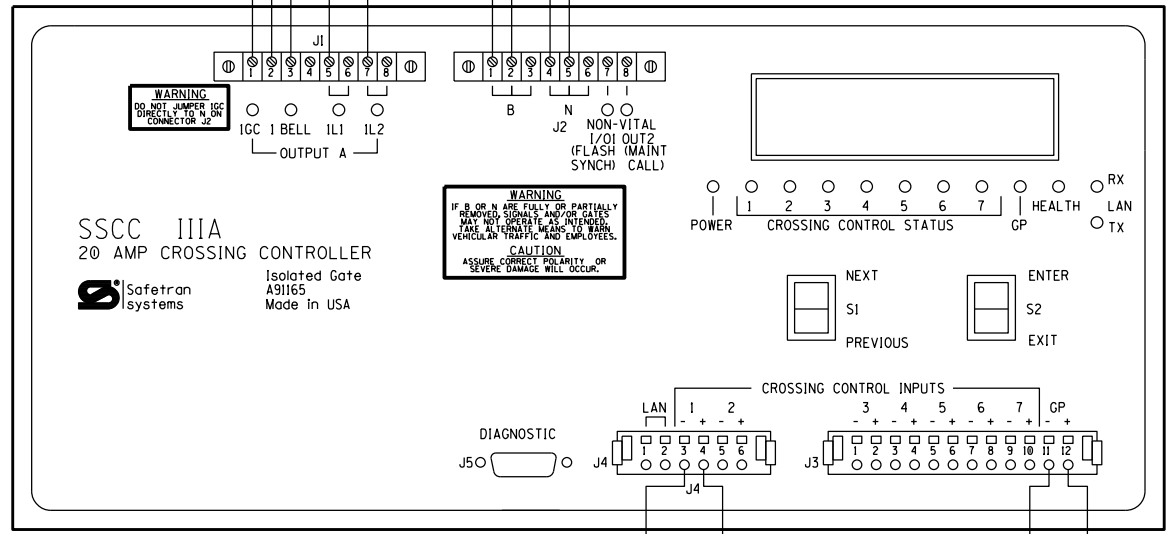


TRACK CONNECTIONS

 RJ Corman Railroad <small>P.O. BOX 788 101 RJ CORMAN DR NICHOLASVILLE, KY 40356</small>		
DESIGNED BY: MGH DIGITIZED BY: RJC CHECKED BY: RWM REV 01	ST. ANTHONY RD. COLDWATER, OH M.P. 123.12 D.O.T. 477-034N ST. MARYS SUBDIVISION	DATE: 01/24/20 FILE: ST12312.08 SHEET 08



(AC2)

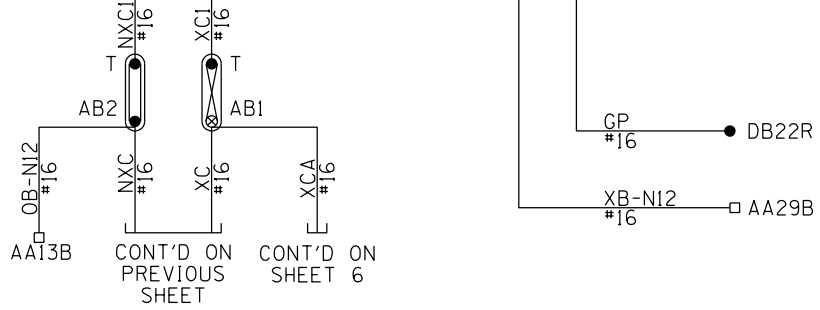


WARNING
DO NOT JUMPER IGC DIRECTLY TO N ON CONNECTOR J2

WARNING
IF B OR N ARE FULLY OR PARTIALLY REMOVED SIGNALS AND/OR LIGHTS MAY NOT OPERATE AS INTENDED. TAKE ALTERNATE MEASURES TO MAINTAIN VEHICULAR TRAFFIC AND EMPLOYEES. CAUTION ASSURE CORRECT PRIORITY, OR SEVERE DAMAGE WILL OCCUR.

NOTES:
ALL WIRING TO BE #10AWG UNLESS NOTED OTHERWISE.

- = 2-3/8" BLOCK
- = TEST LINK
- = TEST NUT
- = 1X12 BLOCKS
- = Heavy Duty Equalizer (022700-1X)
- = RECTIFIER, SAFETRAN PART# 8002A299006



MCF PART NUMBER	MCF NAME	MCF CRC
9V610-A001F	BASIC.MCF	1D240612

PROGRAM		
SUBMENU	NOTES	SETTINGS
FLASH RATE:	30-70 FLASH/MIN DEF.=50	50
GATES USED:	YES/NO DEF.=YES	YES
IGC DELAY:	3-20 SEC. DEF.=4	4 SEC.
GATE RISING BELL:	ON/OFF DEF.=ON	OFF
MIN ACTIVATE TMR:	0-60 SEC. DEF.=0	20 SEC.
ENABLED INPUTS:	1 THRU 1 TO 7 DEF.=1 THRU 7	1 THRU 1
TIME:	24 HOUR FORMAT	
DATE:	YYYY MMM DD	
DAYLIGHT SAVING:	ENABLED/DISABLED DEF.=DISABLED	ENABLED
PASSWORD:	ENABLED/DISABLED DEF.=DISABLED	DISABLED

CONFIGURE		
SUBMENU	NOTES	SETTINGS
LOS TIMERS:	0-20 SEC. INPUTS 1-7 DEF.=0	INPUT 1: 0
		INPUT 2: 0
		INPUT 3: 0
		INPUT 4: 0
		INPUT 5: 0
		INPUT 6: 0
		INPUT 7: 0
ATCS ADDRESS:	DEF.=700000000000	700000000000
LOW BATTERY:	9.0-15.0 VOLTS OR DISABLED DEF.=DISABLED	9.0 VOLTS
AUX I/O:	NONVITAL OUTPUT, FLASH SYNC IN, FLASH SYNC OUT DEF.=NONVITAL OUTPUT	NONVITAL OUTPUT
DETECT LAMP NEUTRAL WIRE:	YES/NO DEF.=YES	NO

SETUP LAMP VOLTAGES #	
SUBMENU	PARAMETERS
OUTPUT 1 L1	XX.X VOLTS
OUTPUT 1 L2	XX.X VOLTS

CONSTRUCTION TO MARK VOLTAGE SETTINGS FOR AS BUILT REVISION.



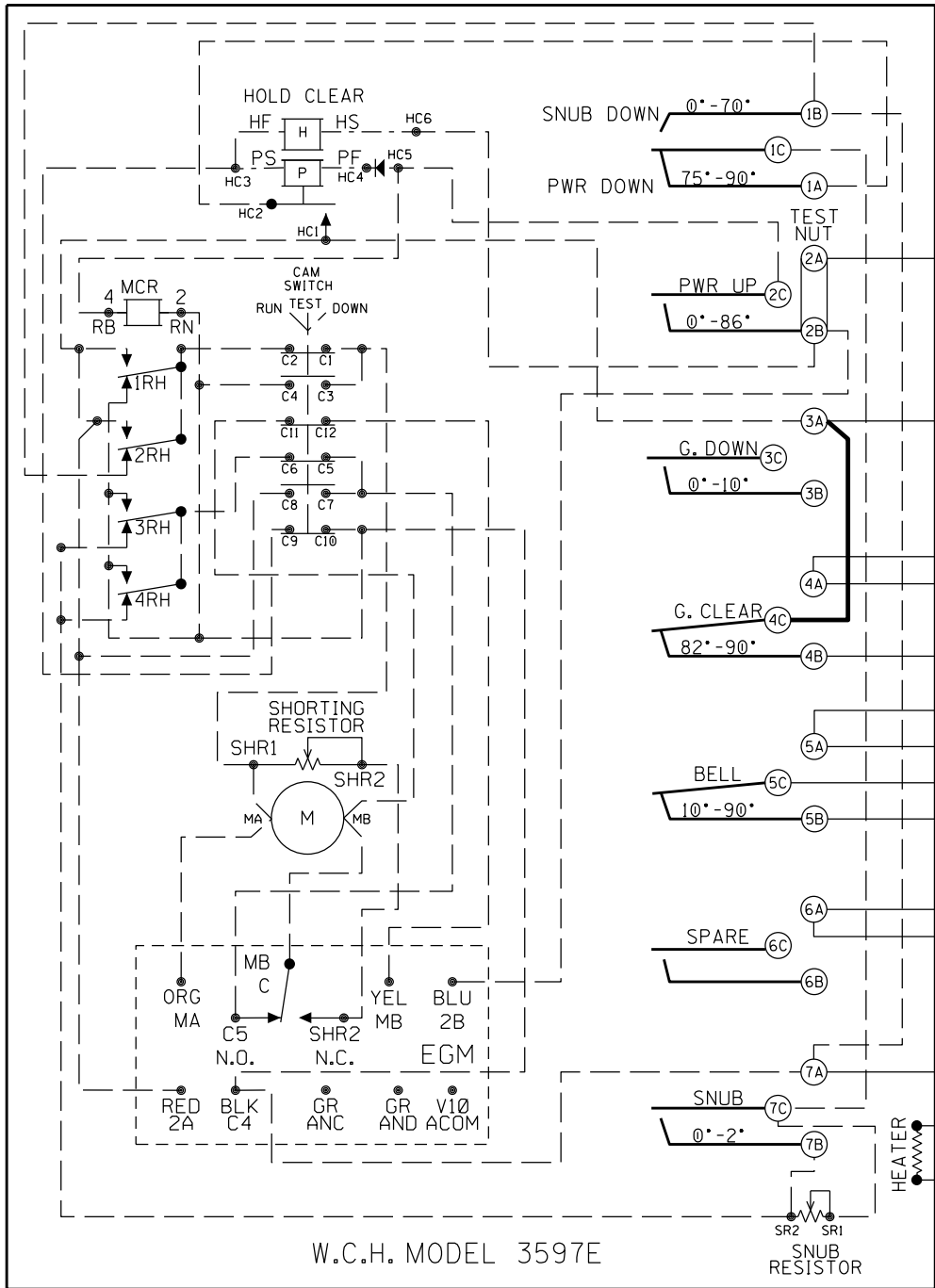
CROSSING CONTROLLER HOOK-UP

RJ Corman Railroad

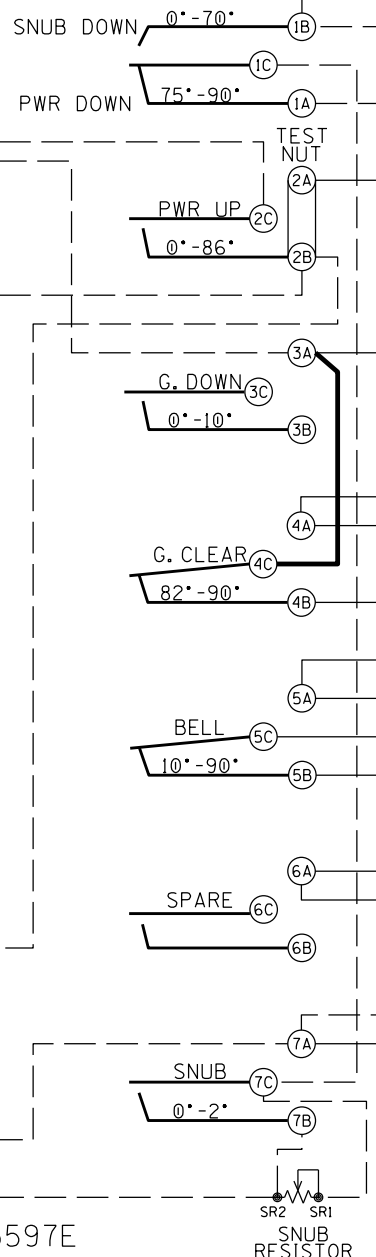
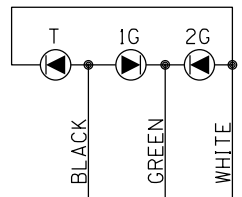
P.O. BOX 788 101 RJ CORMAN DR
NICHOLASVILLE, KY 40356

DESIGNED BY: MGH	ST. ANTHONY RD.	DATE: 01/24/20
DIGITIZED BY: RJC	COLDWATER, OH	FILE: ST12312.09
CHECKED BY: RWM	M.P. 123.12	D.O.T. 477-034N
REV 01	ST. MARYS SUBDIVISION	

GATE A

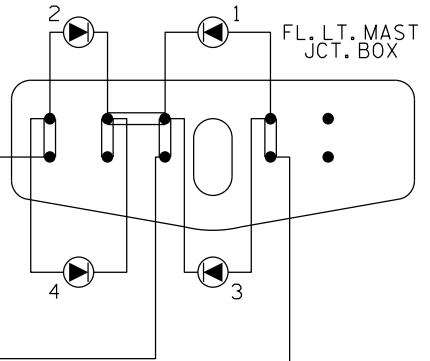
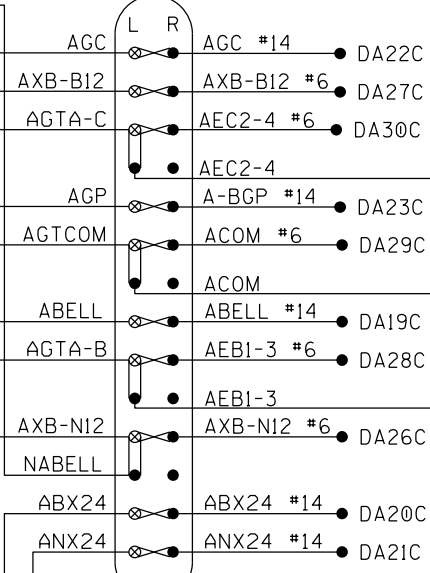


W.C.H. MODEL 3597E

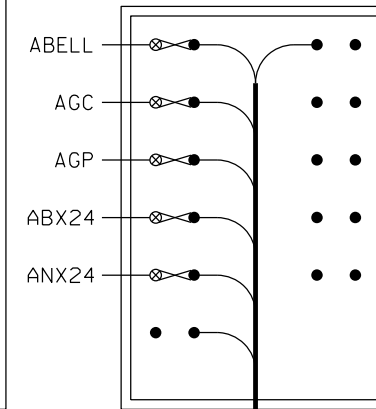


A BELL

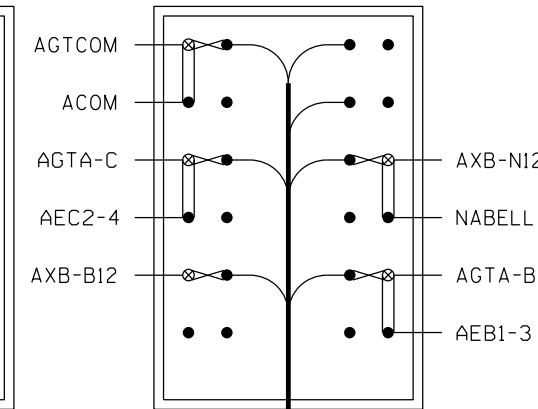
GATE A
BASE JCT BOX



GATE "A"
JCT. BOX
TRACK SIDE



GATE "A"
JCT. BOX
FIELD SIDE



UG-1A TO HOUSE

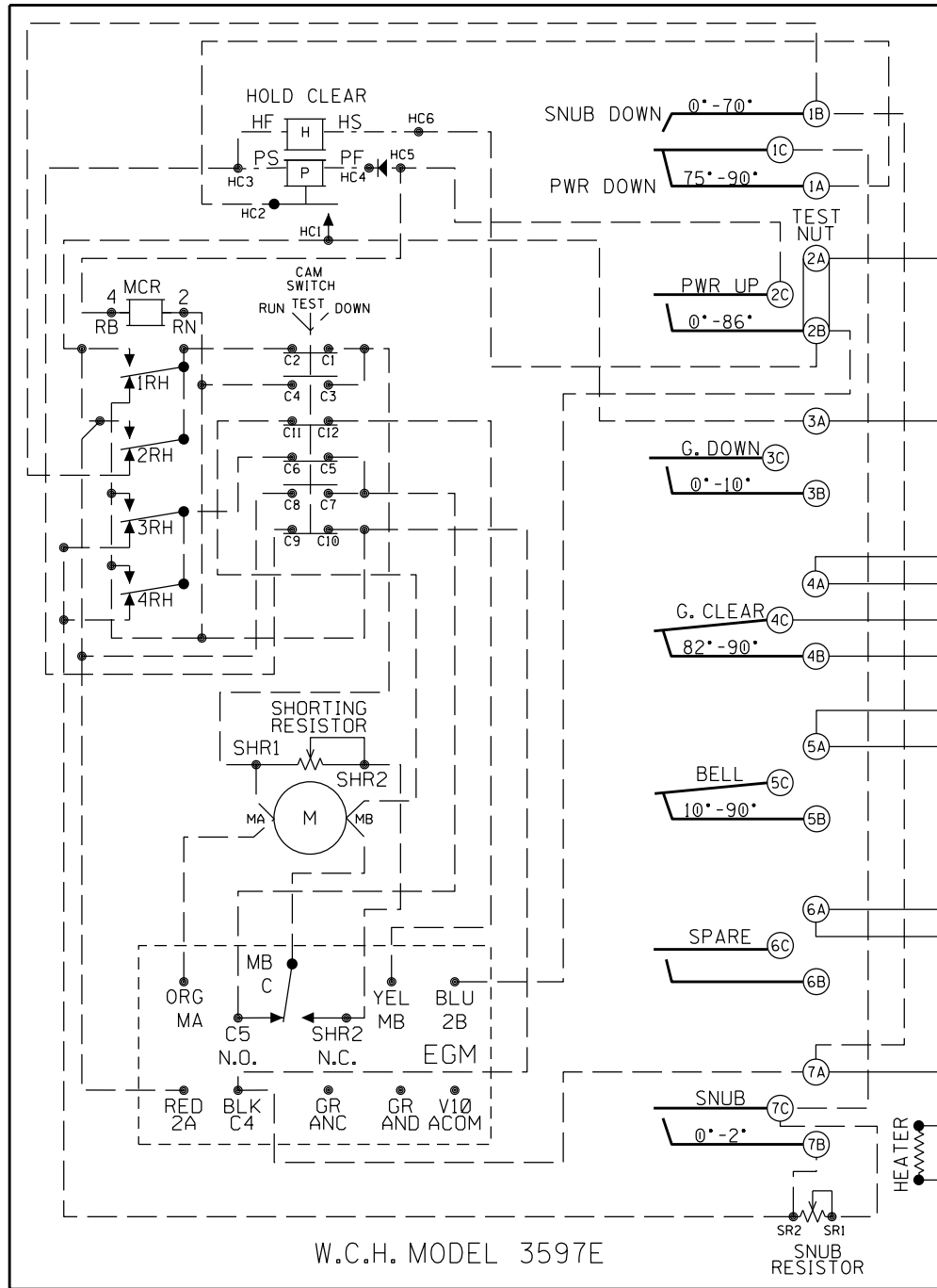
UG-1 TO HOUSE

- NOTES:
1. ALL WIRING #10 AWG UNLESS NOTED OTHERWISE
 2. ADD JUMPERS IN GATE SHOWN IN BOLD.
- = INTERNAL GATE WIRING
 = TEST LINK ⊗ = TEST NUT

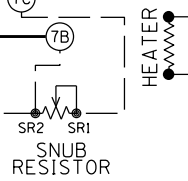
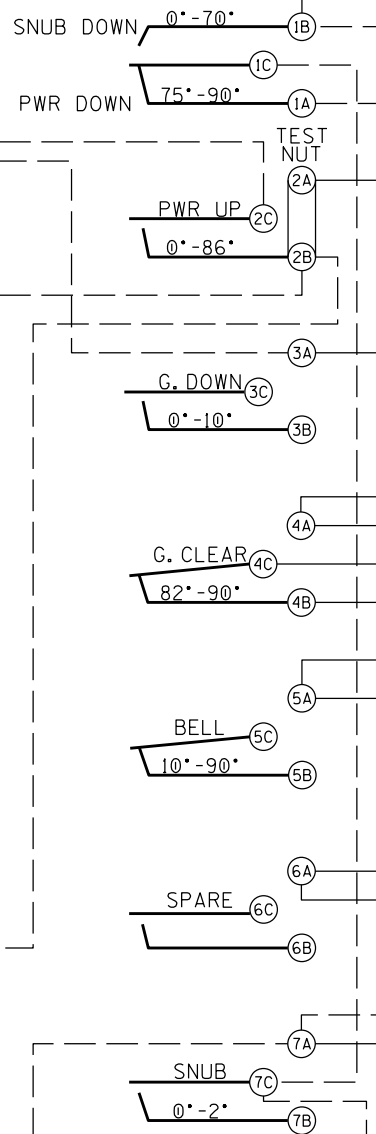
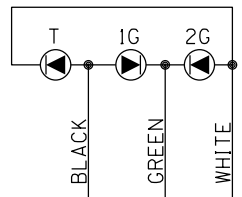
GATE & FLASHER CIRCUITS SIGNAL "A"

RJ Corman Railroad		
P.O. BOX 788 101 RJ CORMAN DR NICHOLASVILLE, KY 40356		
DESIGNED BY: MGH DIGITIZED BY: RJC CHECKED BY: RWM REV 01	ST. ANTHONY RD. COLDWATER, OH M.P. 123.12 D.O.T. 477-034N ST. MARYS SUBDIVISION	DATE: 01/24/20 FILE: ST12312.10 SHEET 10

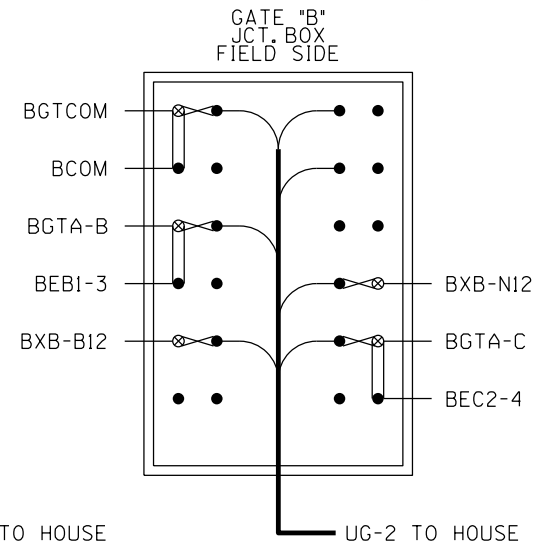
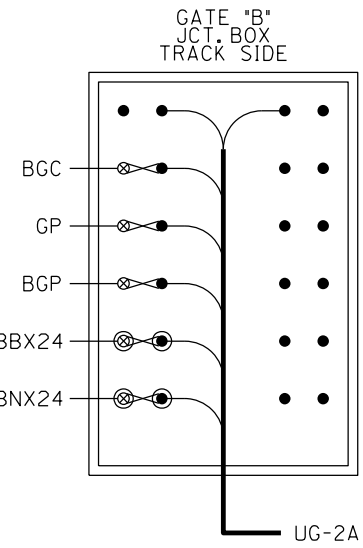
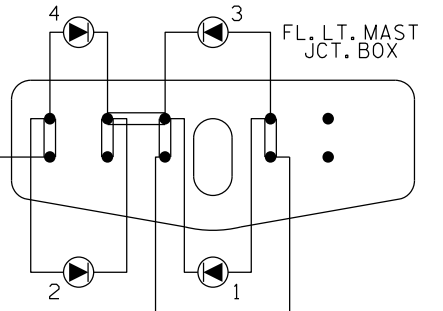
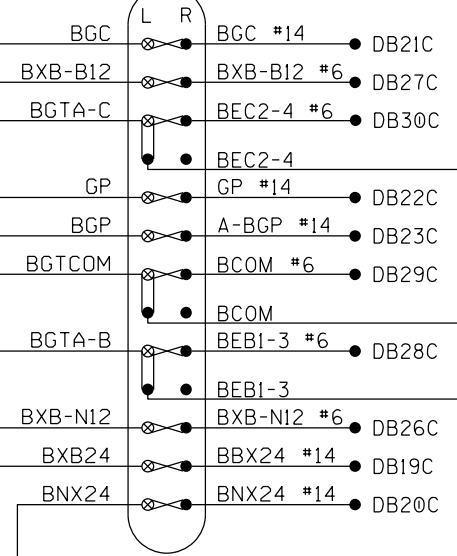
GATE B



W.C.H. MODEL 3597E



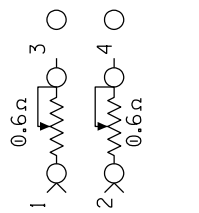
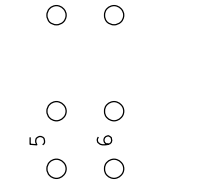
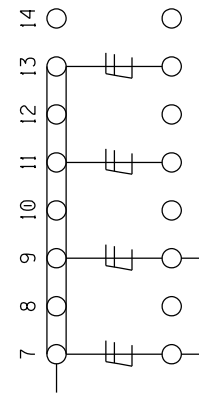
GATE B
BASE JCT BOX



- NOTES:
- ALL WIRING #10 AWG UNLESS NOTED OTHERWISE
- = INTERNAL GATE WIRING
 = TEST LINK
 = TEST NUT

GATE & FLASHER CIRCUITS SIGNAL "B"

<p>RJ Corman Railroad P.O. BOX 788 101 RJ CORMAN DR NICHOLASVILLE, KY 40356</p>		
DESIGNED BY: MGH DIGITIZED BY: RJC CHECKED BY: RWM REV 01	ST. ANTHONY RD. COLDWATER, OH M.P. 123.12 D.O.T. 477-034N ST. MARYS SUBDIVISION	DATE: 01/24/20 FILE: ST12312.11 SHEET 11



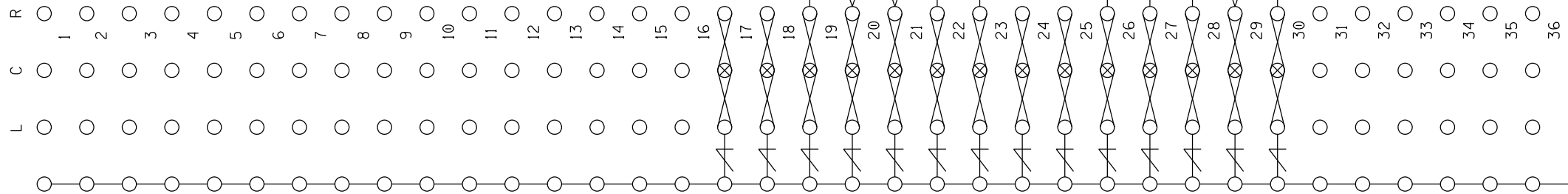
"D"

NOTE:
 Clearview
 < = Lightning Arrester
 (022585-1X)

⊗ = TEST LINK
 ⊗ = TEST NUT

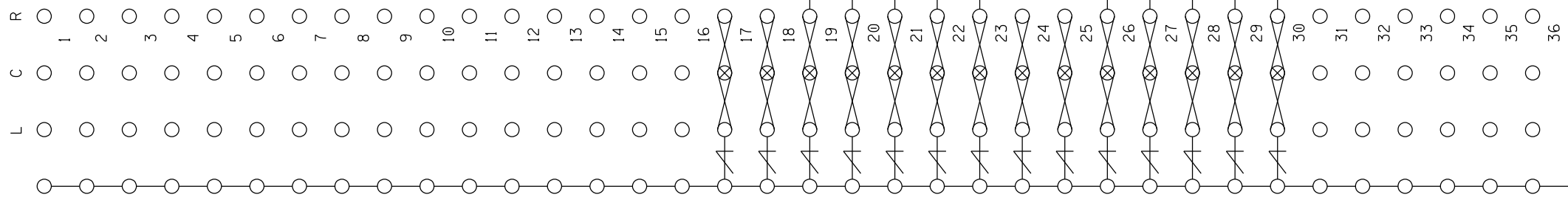
"A"

CASE WIRE



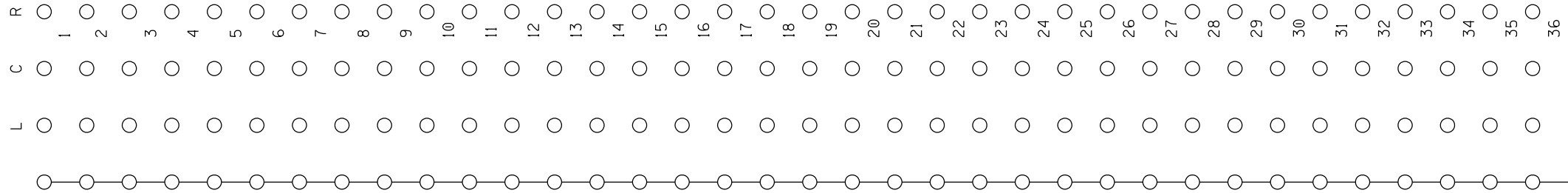
"B"

CASE WIRE



"C"

CASE WIRE



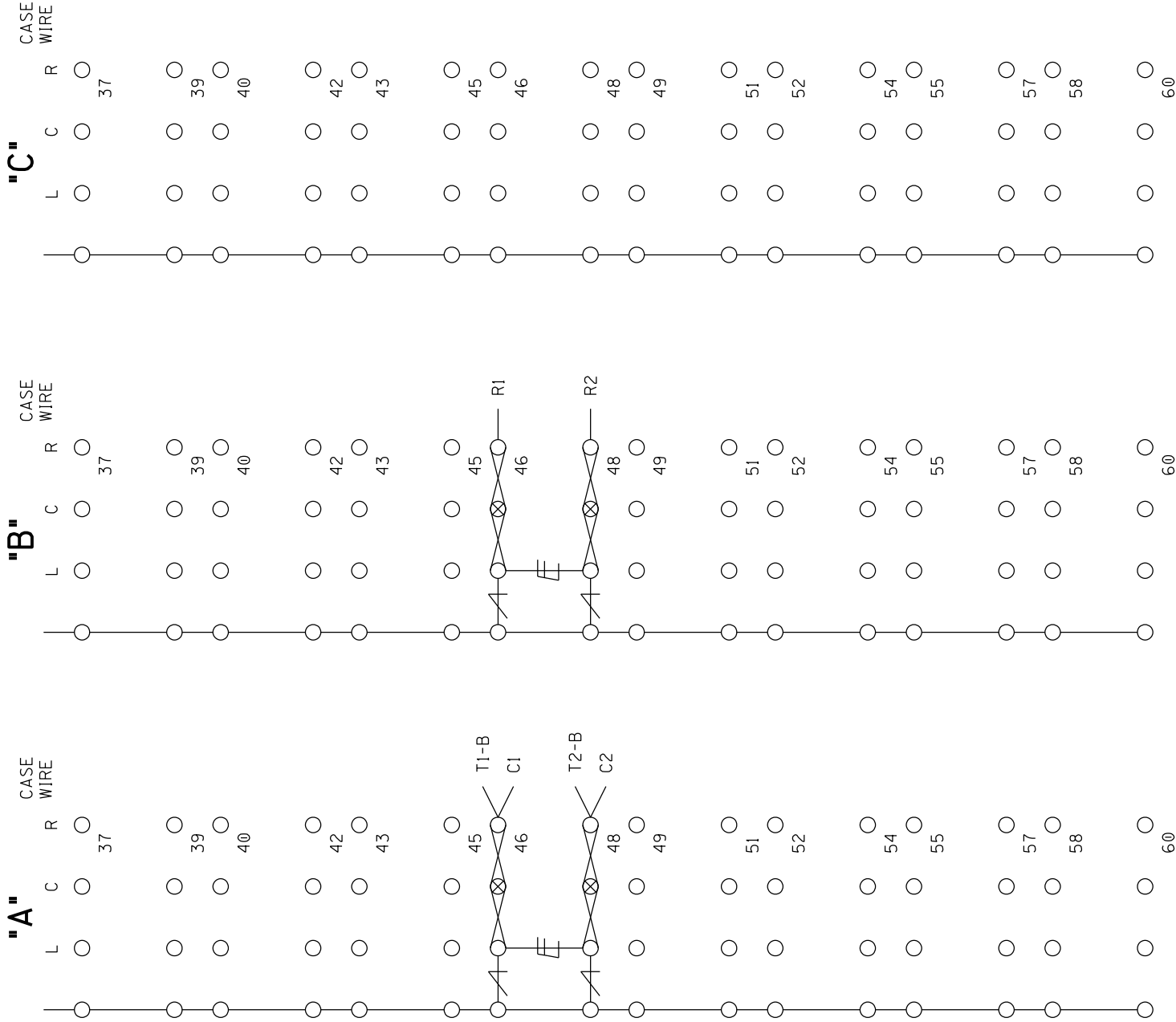
TERMINAL BOARD FRONT LAYOUT



 RJ Corman Railroad <small>P.O. BOX 788 101 RJ CORMAN DR NICHOLASVILLE, KY 40356</small>		
DESIGNED BY: MGH DIGITIZED BY: RJC CHECKED BY: RWM REV 01	ST. ANTHONY RD. COLDWATER, OH M.P. 123.12 D.O.T. 477-034N ST. MARYS SUBDIVISION	DATE: 01/24/20 FILE: ST12312.12 SHEET 12

CONTINUED ON NEXT SHEET

CONTINUED ON PREVIOUS SHEET



NOTE:
 = Heavy Duty Equalizer (022700-1X)
 = Clearview Lightning Arrester (022585-1X)
 = TEST LINK
 = TEST NUT



TERMINAL BOARD FRONT LAYOUT

	RJ Corman Railroad <small>P.O. BOX 788 101 RJ CORMAN DR NICHOLASVILLE, KY 40356</small>		
	DESIGNED BY: MGH DIGITIZED BY: RJC CHECKED BY: RWM REV 01	ST. ANTHONY RD. COLDWATER, OH M.P. 123.12 D.O.T. 477-034N ST. MARYS SUBDIVISION	

OUTSIDE
CABLE

"C"

- C ○
- 1 ○
- 2 ○
- 3 ○
- 4 ○
- 5 ○
- 6 ○
- 7 ○
- 8 ○
- 9 ○
- 10 ○
- 11 ○
- 12 ○
- 13 ○
- 14 ○
- 15 ○
- 16 ○
- 17 ○
- 18 ○
- 19 ○
- 20 ○
- 21 ○
- 22 ○
- 23 ○
- 24 ○
- 25 ○
- 26 ○
- 27 ○
- 28 ○
- 29 ○
- 30 ○
- 31 ○
- 32 ○
- 33 ○
- 34 ○
- 35 ○
- 36 ○

OUTSIDE
CABLE

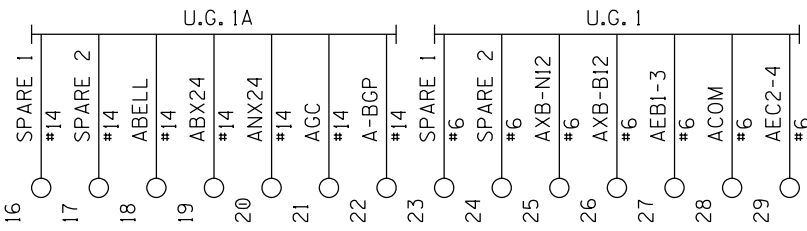
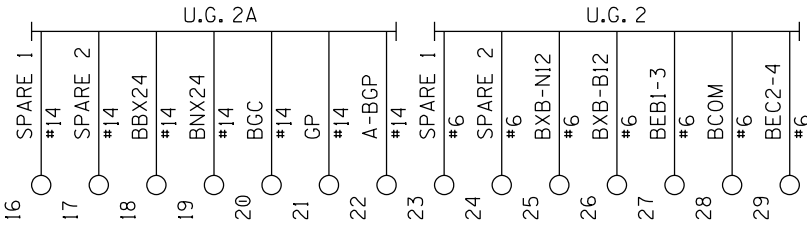
"B"

- C ○
- 1 ○
- 2 ○
- 3 ○
- 4 ○
- 5 ○
- 6 ○
- 7 ○
- 8 ○
- 9 ○
- 10 ○
- 11 ○
- 12 ○
- 13 ○
- 14 ○
- 15 ○
- 16 ○
- 17 ○
- 18 ○
- 19 ○
- 20 ○
- 21 ○
- 22 ○
- 23 ○
- 24 ○
- 25 ○
- 26 ○
- 27 ○
- 28 ○
- 29 ○
- 30 ○
- 31 ○
- 32 ○
- 33 ○
- 34 ○
- 35 ○
- 36 ○

OUTSIDE
CABLE

"A"

- C ○
- 1 ○
- 2 ○
- 3 ○
- 4 ○
- 5 ○
- 6 ○
- 7 ○
- 8 ○
- 9 ○
- 10 ○
- 11 ○
- 12 ○
- 13 ○
- 14 ○
- 15 ○
- 16 ○
- 17 ○
- 18 ○
- 19 ○
- 20 ○
- 21 ○
- 22 ○
- 23 ○
- 24 ○
- 25 ○
- 26 ○
- 27 ○
- 28 ○
- 29 ○
- 30 ○
- 31 ○
- 32 ○
- 33 ○
- 34 ○
- 35 ○
- 36 ○



TERMINAL BOARD REAR LAYOUT



RJ Corman Railroad

P.O. BOX 788 101 RJ CORMAN DR
NICHOLASVILLE, KY 40356



DESIGNED BY: MGH
DIGITIZED BY: RJC
CHECKED BY: RWM
REV 01

ST. ANTHONY RD.
COLDWATER, OH
M.P. 123.12 D.O.T. 477-034N
ST. MARYS SUBDIVISION

DATE: 01/24/20
FILE: ST12312.14
SHEET 14

CONTINUED ON NEXT SHEET

CONTINUED ON PREVIOUS SHEET

OUTSIDE
CABLE

"C"

C
37

39

40

42

43

45

46

48

49

51

52

54

55

57

58

60

OUTSIDE
CABLE

"B"

C
37

39

40

42

43

45

46

48

49

51

52

54

55

57

58

60

OUTSIDE
CABLE

"A"

C
37

39

40

42

43

45

46

48

49

51

52

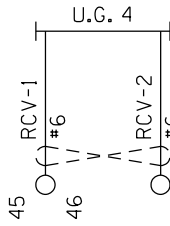
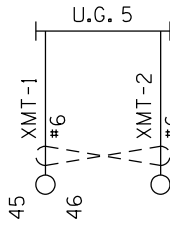
54

55

57

58

60



NOTE:

() x () = TWIST



TERMINAL BOARD REAR LAYOUT



RJ Corman Railroad

P.O. BOX 788 101 RJ CORMAN DR
NICHOLASVILLE, KY 40356



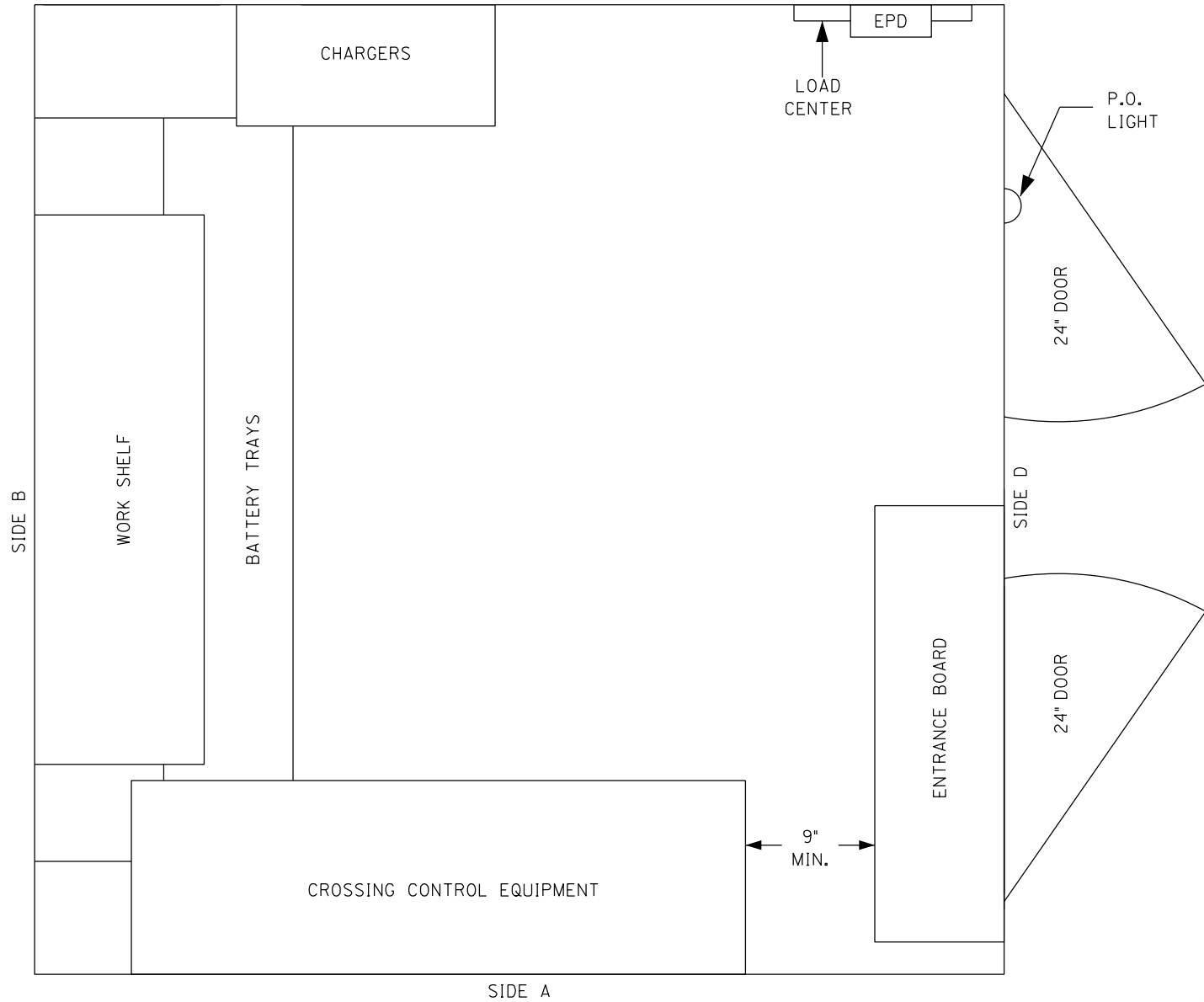
DESIGNED BY: MGH
DIGITIZED BY: RJC
CHECKED BY: RWM
REV 01

ST. ANTHONY RD.
COLDWATER, OH
M.P. 123.12 D.O.T. 477-034N
ST. MARYS SUBDIVISION

DATE: 01/24/20
FILE: ST12312.15
SHEET 15

6'X6' TOP VIEW

SIDE C



LOAD CENTER

EPD

P.O. LIGHT

24" DOOR

24" DOOR

ENTRANCE BOARD

9" MIN.

CROSSING CONTROL EQUIPMENT

CHARGERS

WORK SHELF

BATTERY TRAYS


SIDE B

SIDE D

SIDE A

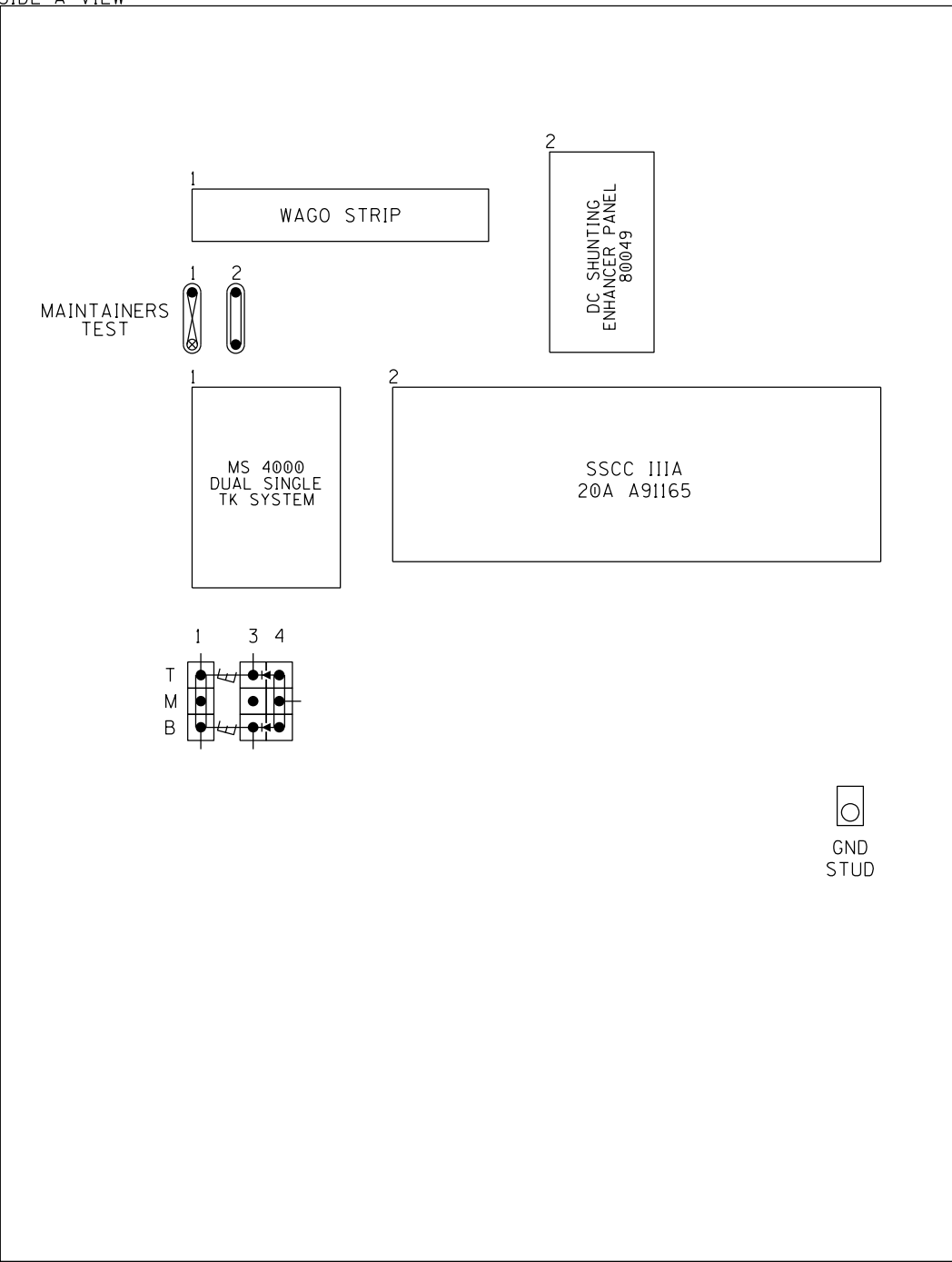


6'X6' SHELTER LAYOUT - TOP VIEW

 RJ Corman Railroad <small>P.O. BOX 788 101 RJ CORMAN DR NICHOLASVILLE, KY 40356</small>		
DESIGNED BY: MGH	ST. ANTHONY RD.	
DIGITIZED BY: RJC	COLDWATER, OH	
CHECKED BY: RWM	M.P. 123.12	D.O.T. 477-034N
REV 01	ST. MARYS SUBDIVISION	
		DATE: 01/24/20 FILE: ST12312.16 SHEET 16

SIDE A VIEW

A
B
C
D
E



- NOTE:
- = TEST LINK
 - = TEST NUT
 - = 2-3/8" BLOCK
 - = Heavy Duty Equalizer (022700-1X)
 - = RECTIFIER, SAFETRAN PART# 8002A299006
 - = 1X12 BLOCKS

GND STUD



6' X 6' HOUSE - SIDE "A"

RJ Corman Railroad <small>P.O. BOX 788 101 RJ CORMAN DR NICHOLASVILLE, KY 40356</small>		
DESIGNED BY: MGH DIGITIZED BY: RJC CHECKED BY: RWM REV 01	ST. ANTHONY RD. COLDWATER, OH M.P. 123.12 D.O.T. 477-034N ST. MARYS SUBDIVISION	DATE: 01/24/20 FILE: ST12312.17 SHEET 17

SIDE B VIEW

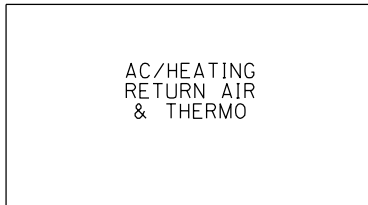
A



AC/HEATING
SUPPLY AIR

B

C



AC/HEATING
RETURN AIR
& THERMO



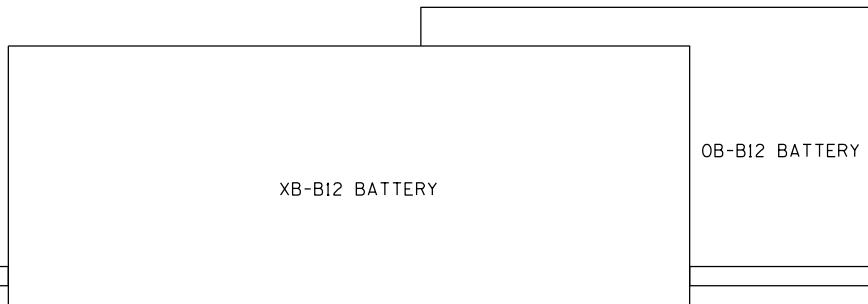
HVAC
THERM



5
RECEPTACLE

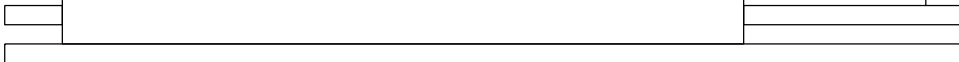


WORK SHELF/STORAGE



XB-B12 BATTERY

OB-B12 BATTERY



BATTERY TRAYS



6' X 6' HOUSE - SIDE "B"



RJ Corman Railroad

P.O. BOX 788 101 RJ CORMAN DR
NICHOLASVILLE, KY 40356



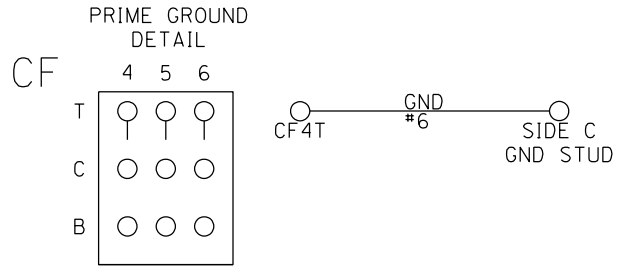
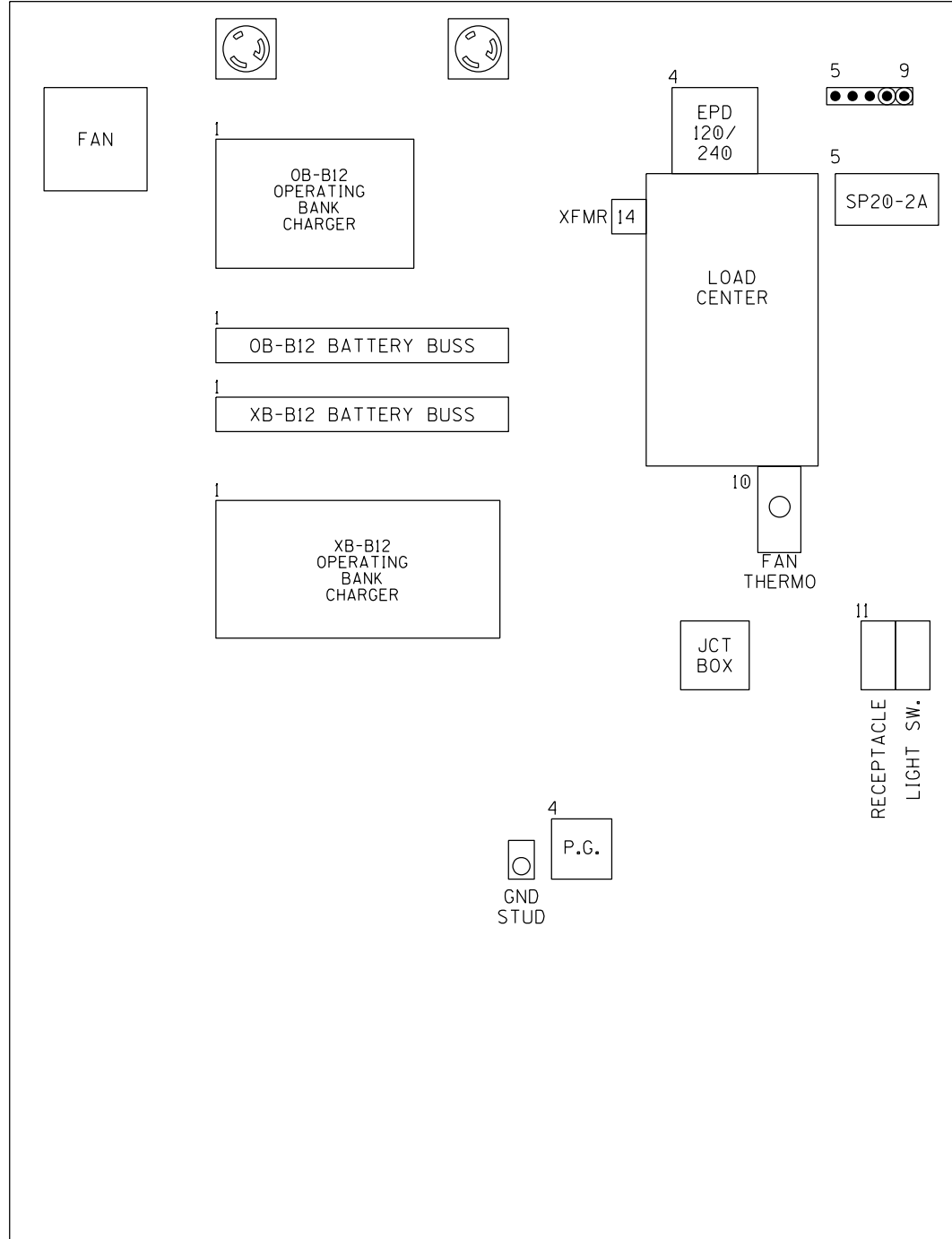
DESIGNED BY: MGH
DIGITIZED BY: RJC
CHECKED BY: RWM
REV 01

ST. ANTHONY RD.
COLDWATER, OH
M.P. 123.12 D.O.T. 477-034N
ST. MARYS SUBDIVISION


DATE: 01/24/20
FILE: ST12312.18
SHEET 18

SIDE C VIEW

A
B
C
D
E
F



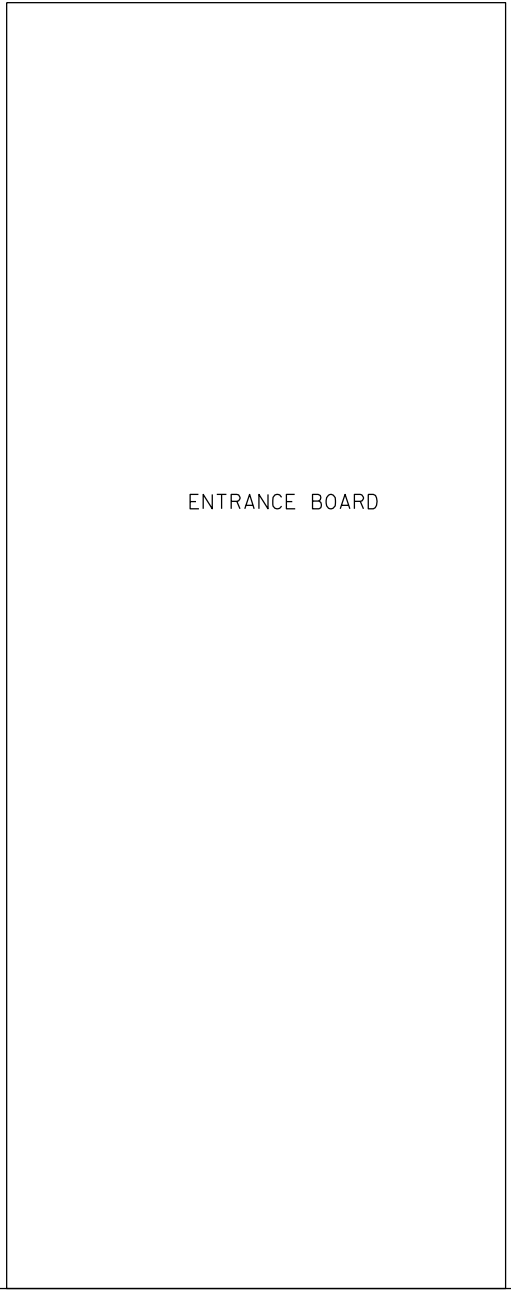
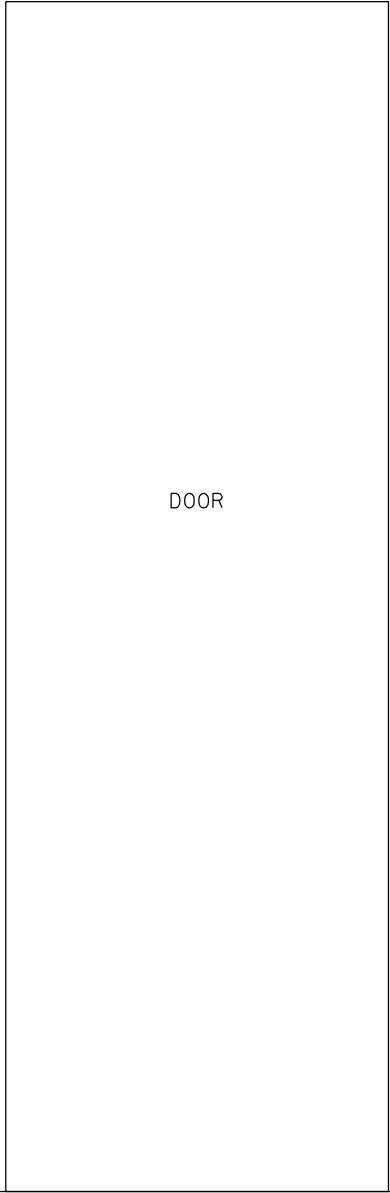
6' X 6' HOUSE - SIDE "C"

 RJ Corman Railroad <small>P.O. BOX 788 101 RJ CORMAN DR NICHOLASVILLE, KY 40356</small>		
DESIGNED BY: MGH DIGITIZED BY: RJC CHECKED BY: RWM REV 01	ST. ANTHONY RD. COLDWATER, OH M.P. 123.12 ST. MARYS SUBDIVISION	DATE: 01/24/20 FILE: ST12312.19 SHEET 19

E

SIDE D VIEW


GEMS
P.O.L. 1



EMERGENCY SWITCH
BEHIND TERMINAL BOARD



6' X 6' HOUSE - SIDE "D"

		RJ Corman Railroad			
<small>P.O. BOX 788</small>		<small>101 RJ CORMAN DR</small>		<small>NICHOLASVILLE, KY 40356</small>	
DESIGNED BY: MGH	ST. ANTHONY RD.		DATE: 01/24/20		
DIGITIZED BY: RJC	COLDWATER, OH		FILE: ST12312.20		
CHECKED BY: RWM	M.P. 123.12	D.O.T. 477-034N		SHEET 20	
REV 01	ST. MARYS SUBDIVISION				