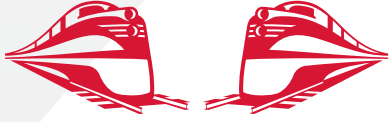


**Rj Corman**  
Railroad Company



# GAINES PROPERTY SOUTH TRACT

SHEPHERDSVILLE, KY

## OVERVIEW

**TYPE:** SITE

**ACRES:** 27

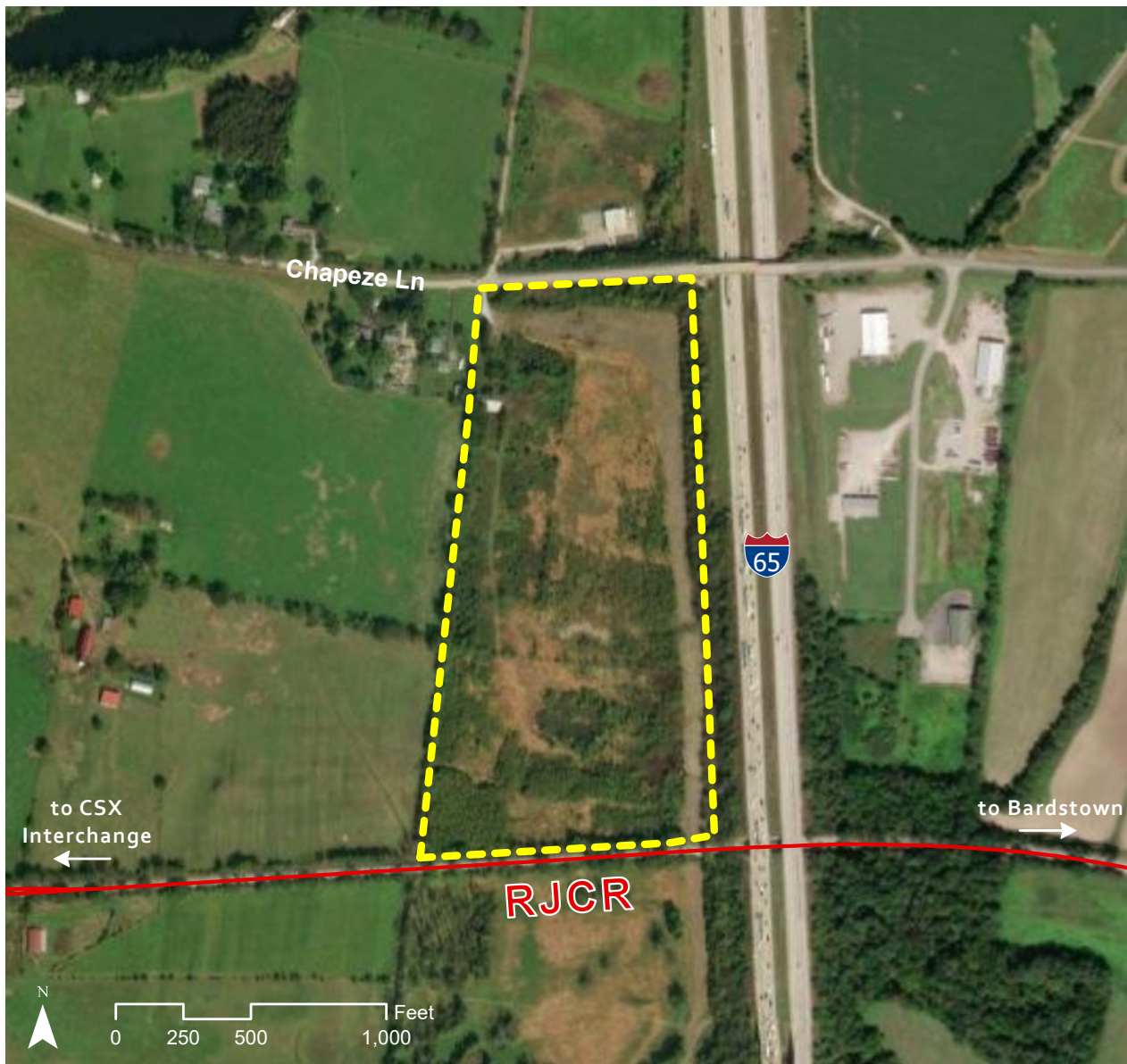
**DIVISIBLE:** NO

**ZONING:** LIGHT INDUSTRIAL

**OWNERSHIP:** PRIVATE

**FOR SALE/ LEASE:** SALE

**PRICE PER ACRE:** \$59,259



INDUSTRIAL DEVELOPMENT SITE



**JAKE WEIR**

SR. DIRECTOR, INDUSTRIAL DEVELOPMENT

JAKE.WEIR@RJCORMAN.COM

C: 859-469-2560

[RJCORMAN.COM/DEVELOPMENT](http://RJCORMAN.COM/DEVELOPMENT)

# GAINES PROPERTY SOUTH TRACT

SHEPHERDSVILLE, KY

## LOCATION

**Latitude, Longitude:** 37.9360, -85.6901

**County:** Bullitt

## UTILITY

**Electric Provider / Details:** Salt River Electric

**Water Provider / Details:** Louisville Water/ Easement running through site

**Sewer Provider / Details:** City of Shepherdsville / 2,000 ft away on South Presston Hwy

## TRANSPORTATION

**Nearest Highway / Distance:** SR 61 / 0.5 miles

**Nearest Interstate / Distance:** I-65 / 2.4 miles

**Nearest Airport / Distance:** Louisville International Airport / 20 miles

**Nearest Port / Distance:** Louisville Riverport / 30 miles

## RAIL

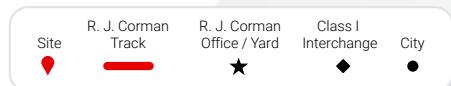
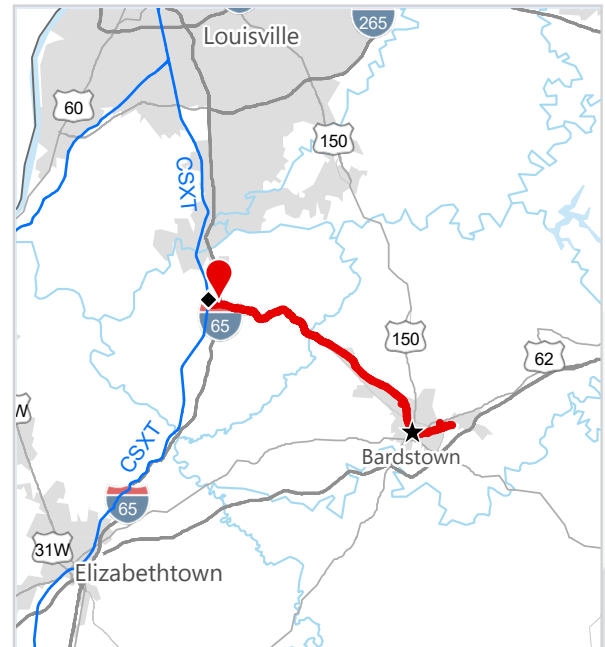
**Closest Distribution Center:** South Union

**Closest Transloading Facility:** South Union

**Class I Interchange Partner(s):** CSX

**Interchange Point(s):** Shepherdsville

**Served by:** RJCR



**JAKE WEIR** SR. DIRECTOR, INDUSTRIAL DEVELOPMENT  
 JAKE.WEIR@RJCORMAN.COM  
 C: 859-469-2560

[RJCORMAN.COM/DEVELOPMENT](http://RJCORMAN.COM/DEVELOPMENT)