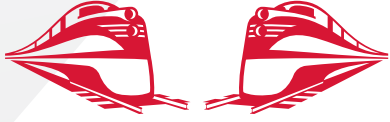


# Rj Corman Railroad Company



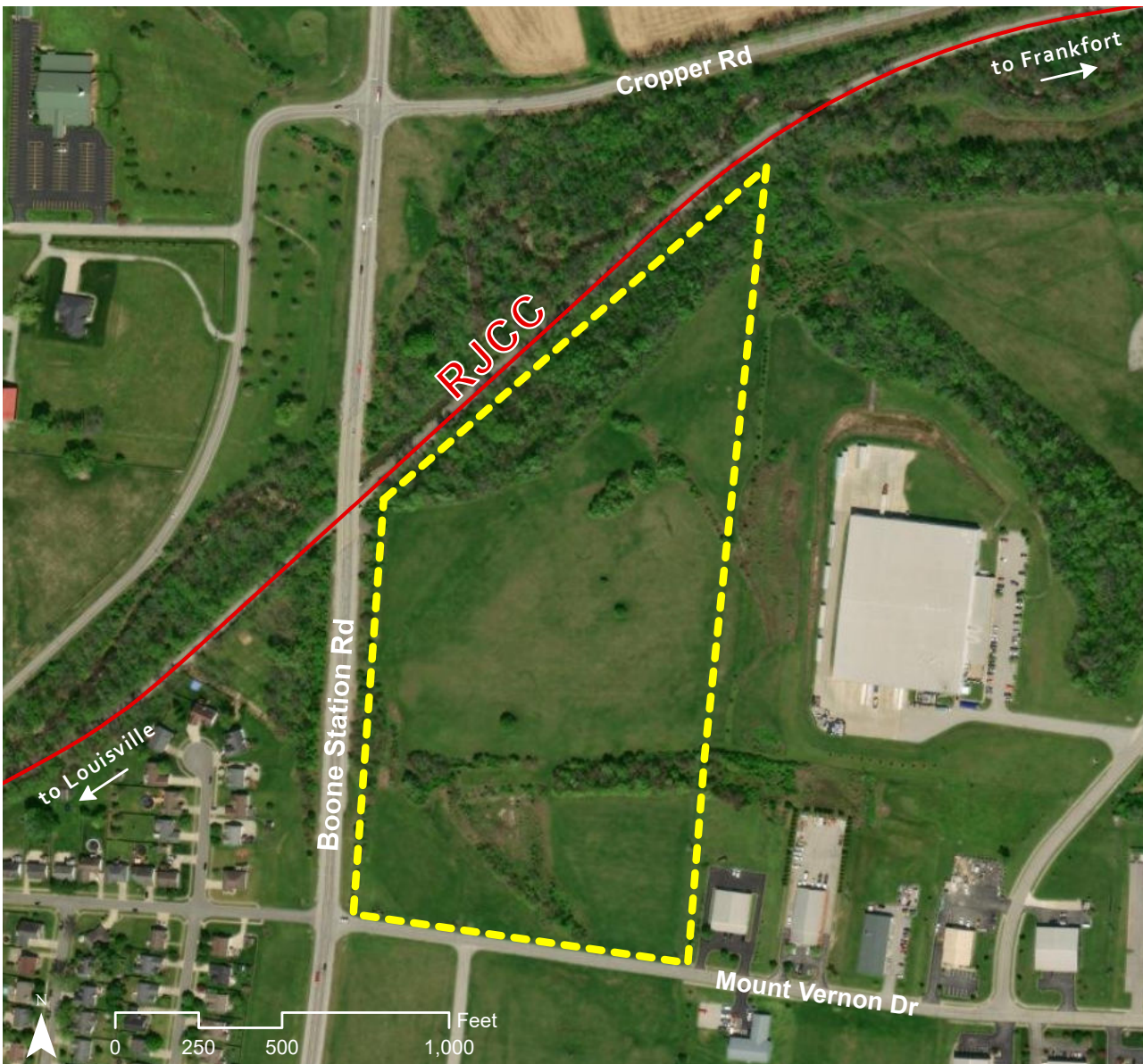
## CLEAR CREEK PROPERTIES SHELBYVILLE, KY

### OVERVIEW

**TYPE:** SITE  
**ACRES:** 22.98  
**DIVISIBLE:** YES

**ZONING:** COMMERCIAL  
**OWNERSHIP:** PUBLIC  
**FOR SALE/ LEASE:** SALE

**PRICE PER ACRE:**  
\$90,000



**JAKE WEIR**  
SR. DIRECTOR, INDUSTRIAL DEVELOPMENT  
JAKE.WEIR@RJCORMAN.COM  
C: 859-469-2560

[RJCORMAN.COM/DEVELOPMENT](http://RJCORMAN.COM/DEVELOPMENT)



INDUSTRIAL DEVELOPMENT SITE

# CLEAR CREEK PROPERTIES

SHELBYVILLE, KY

## LOCATION

**Latitude, Longitude:** 38.2237, -85.2009

**County:** Shelby

## UTILITY

**Electric Provider / Details:** Kentucky Utilities / On site

**Water Provider / Details:** Shelbyville Municipal Water and Sewer Commission / 12" line on site

**Sewer Provider / Details:** Shelbyville Municipal Water and Sewer Commission /  
8" & 12" gravity lines on site

**Gas Provider / Details:** Atmos Energy Corporation, 4" line on site

**Telecom Provider / Details:** AT&T

## TRANSPORTATION

**Nearest Highway / Distance:** SR 55B/ adjacent

**Nearest Interstate / Distance:** I-64/ 2.8 Miles

**Nearest Airport / Distance:** Louisville International - Standford Field / 34 miles

**Nearest Port / Distance:** Louisville- Jefferson County Riverport / 43 Miles

## PROPERTY DETAILS

**Due Diligence Conducted:** Environmental  
and Geotechnical

## RAIL

**Closest Distribution Center:** Nicholasville

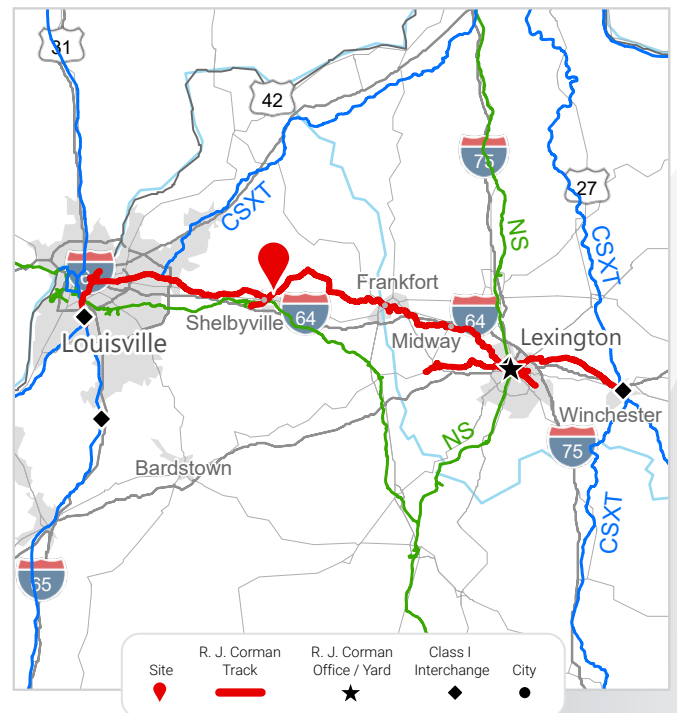
Material Sales Yard

**Closest Transloading Facility:** Lexington Yard

**Class I Interchange Partner(s):** CSX &  
Norfolk Southern

**Interchange Points(s):** Louisville,  
Winchester (CSX) / Lexington (NS)

**Served by:** RJCC



**JAKE WEIR** SR. DIRECTOR, INDUSTRIAL DEVELOPMENT  
JAKE.WEIR@RJCORMAN.COM  
C: 859-469-2560

RJCORMAN.COM/DEVELOPMENT