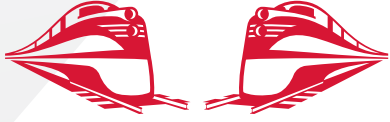


# Rj Corman Railroad Company



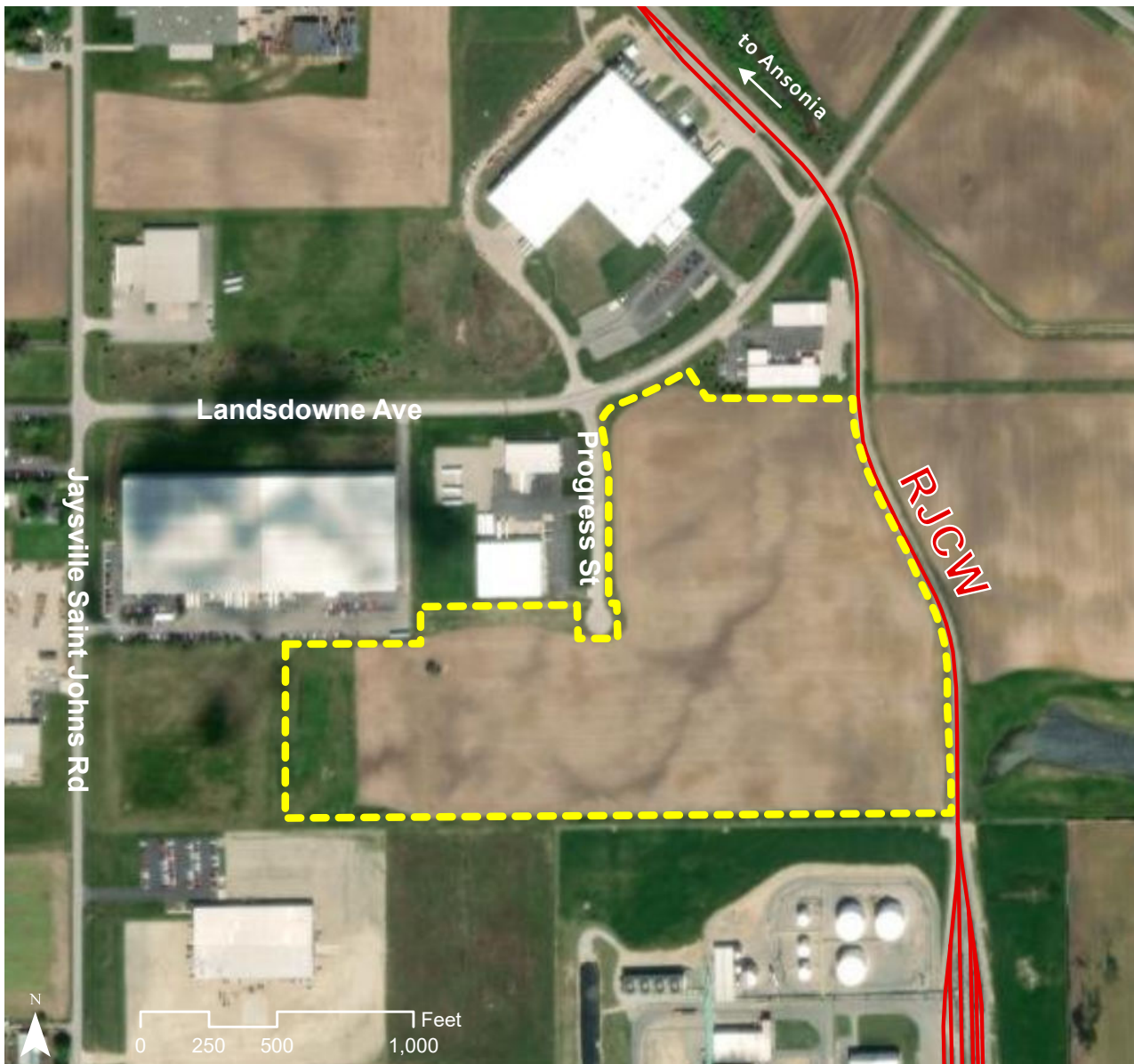
## GREENVILLE INDUSTRIAL CUL DE SAC GREENVILLE, OH

### OVERVIEW

**TYPE:** SITE  
**ACRES:** 35.3  
**DIVISIBLE:** NO

**ZONING:** INDUSTRIAL  
**OWNERSHIP:** PUBLIC  
**FOR SALE/ LEASE:** SALE

**PRICE**  
**PER ACRE:** \$25,000



**JAKE WEIR**  
SR. DIRECTOR, INDUSTRIAL DEVELOPMENT  
JAKE.WEIR@RJCORMAN.COM  
C: 859-469-2560

[RJCORMAN.COM/DEVELOPMENT](http://RJCORMAN.COM/DEVELOPMENT)



INDUSTRIAL DEVELOPMENT SITE

# GREENVILLE INDUSTRIAL CUL DE SAC

GREENVILLE, OH

## LOCATION

**Latitude, Longitude:** 40.0869, -84.5938

**County:** Darke

## UTILITY

**Electric Provider / Details:** AES Ohio on site

**Water Provider / Details:** City of Greenville

**Sewer Provider Details:** City of Greenville

**Gas Provider / Details:** Centerpoint Energy

**Telecom Provider / Details:** Century Link

## TRANSPORTATION

**Nearest Highway / Distance:** SR 571 / 0.1 miles

**Nearest Interstate / Distance:** I-70 / 19 miles

**Nearest Airport / Distance:** Dayton International / 25 miles

## RAIL

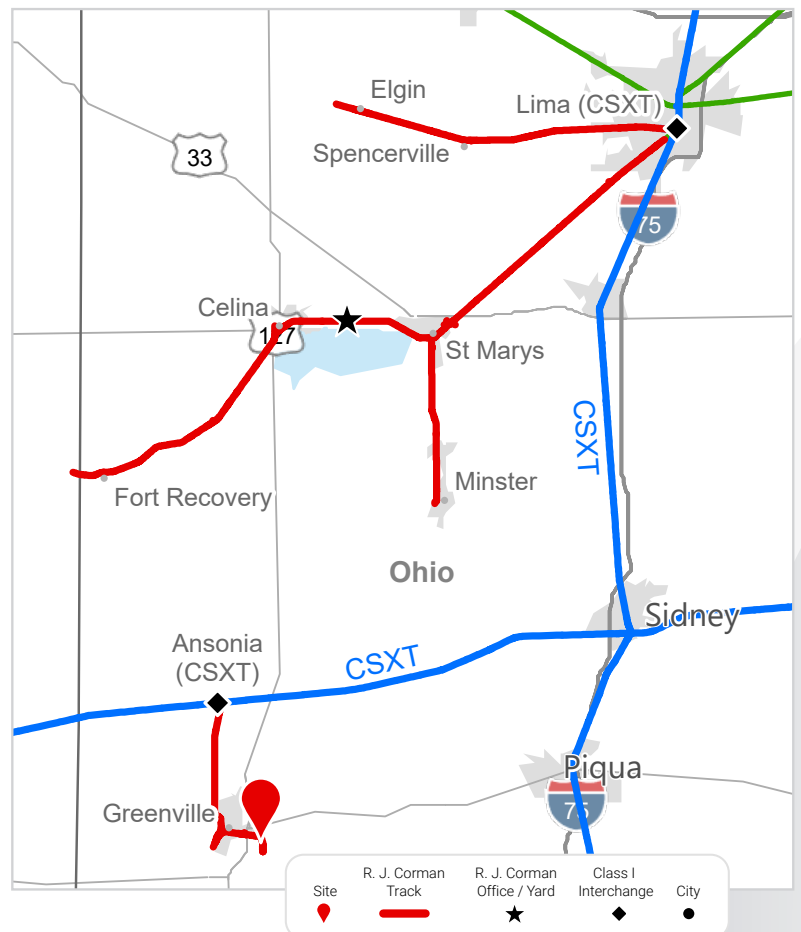
**Closest Distribution Center:** Celina

**Closest Transloading Facility:** Celina

**Class I Interchange Partner(s):** CSX

**Interchange Points(s):** Ansonia

**Served by:** RJCW



**JAKE WEIR** SR. DIRECTOR, INDUSTRIAL DEVELOPMENT  
 JAKE.WEIR@RJCORMAN.COM  
 C: 859-469-2560

[RJCORMAN.COM/DEVELOPMENT](http://RJCORMAN.COM/DEVELOPMENT)