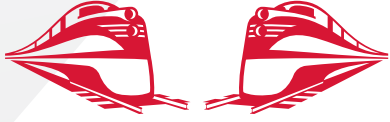


# Rj Corman Railroad Company



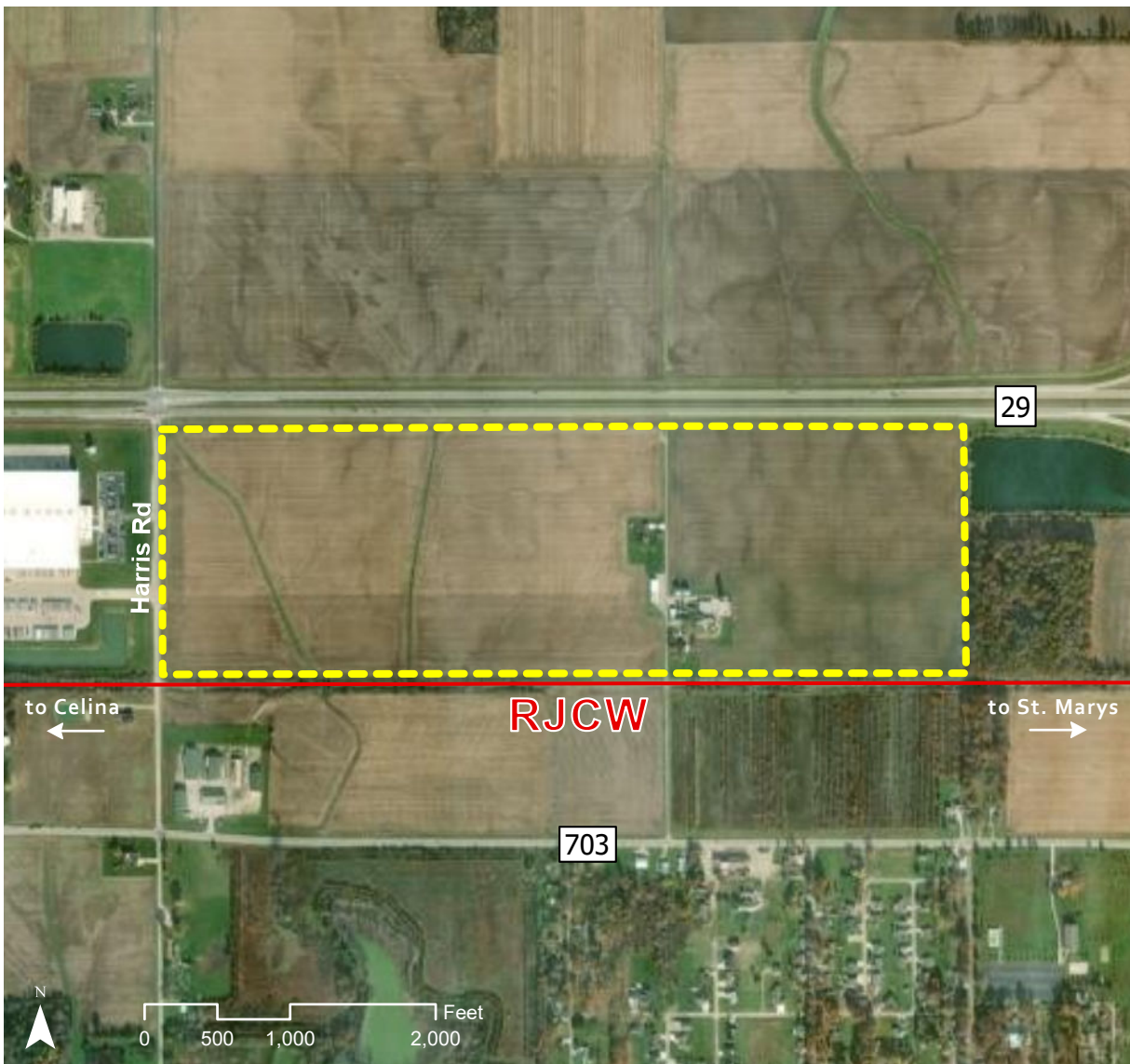
## GROWING ACRES - SITE C CELINA, OH

### OVERVIEW

**TYPE:** SITE  
**ACRES:** 122  
**DIVISIBLE:** NO

**ZONING:** INDUSTRIAL  
**OWNERSHIP:** PRIVATE;  
GROWING ACRES, LLC

**FOR SALE/ LEASE:**  
SALE  
**PRICE PER ACRE:**  
\$50,000



**JAKE WEIR**  
SR. DIRECTOR, INDUSTRIAL DEVELOPMENT  
JAKE.WEIR@RJCORMAN.COM  
C: 859-469-2560

[RJCORMAN.COM/DEVELOPMENT](http://RJCORMAN.COM/DEVELOPMENT)



INDUSTRIAL DEVELOPMENT SITE

# GROWING ACRES - SITE C

CELINA, OH

## LOCATION

**Latitude, Longitude:** 40.5554, -84.4622

**County:** Mercer

## UTILITY

**Electric Provider / Details:** AES Ohio / On site : 3 phase; 480 V

**Water Provider / Details:** Celina Municipal Utilities / 12" line on site

**Sewer Provider / Details:** City of Celina / 8" line on site

**Gas Provider / Details:** Dominion East Ohio Gas Company / 4" line on site

**Telecom Provider / Details:** NK Telco / Fiber on site

## TRANSPORTATION

**Nearest Highway / Distance:** SR 29 / Adjacent

**Nearest Interstate / Distance:** I-75 / 13 miles

**Nearest Airport / Distance:** Lakefield- Montezuma / 8 miles

**Nearest Port / Distance:** Toledo Port Authority / 100 miles

## PROPERTY DETAILS

**Due Diligence Conducted:** Environmental, eotechnical, Wetlands, Archeological, Endangered Species

## RAIL

**Closest Distribution Center:** Celina

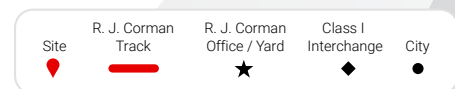
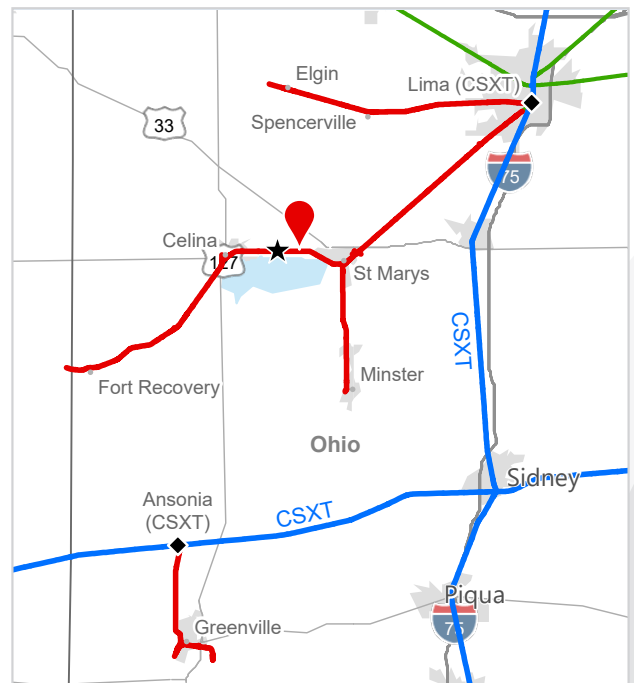
**Closest Transloading Facility:** Celina

**Class I Interchange Partner(s):** Lima (CSX and NS)

**Interchange Point(s):** CSX &

Norfolk Southern

**Served by:** RJCW



**JAKE WEIR** SR. DIRECTOR, INDUSTRIAL DEVELOPMENT  
 JAKE.WEIR@RJCORMAN.COM  
 C: 859-469-2560

RJCORMAN.COM/DEVELOPMENT