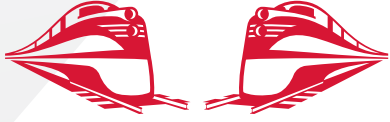


Rj Corman Railroad Company



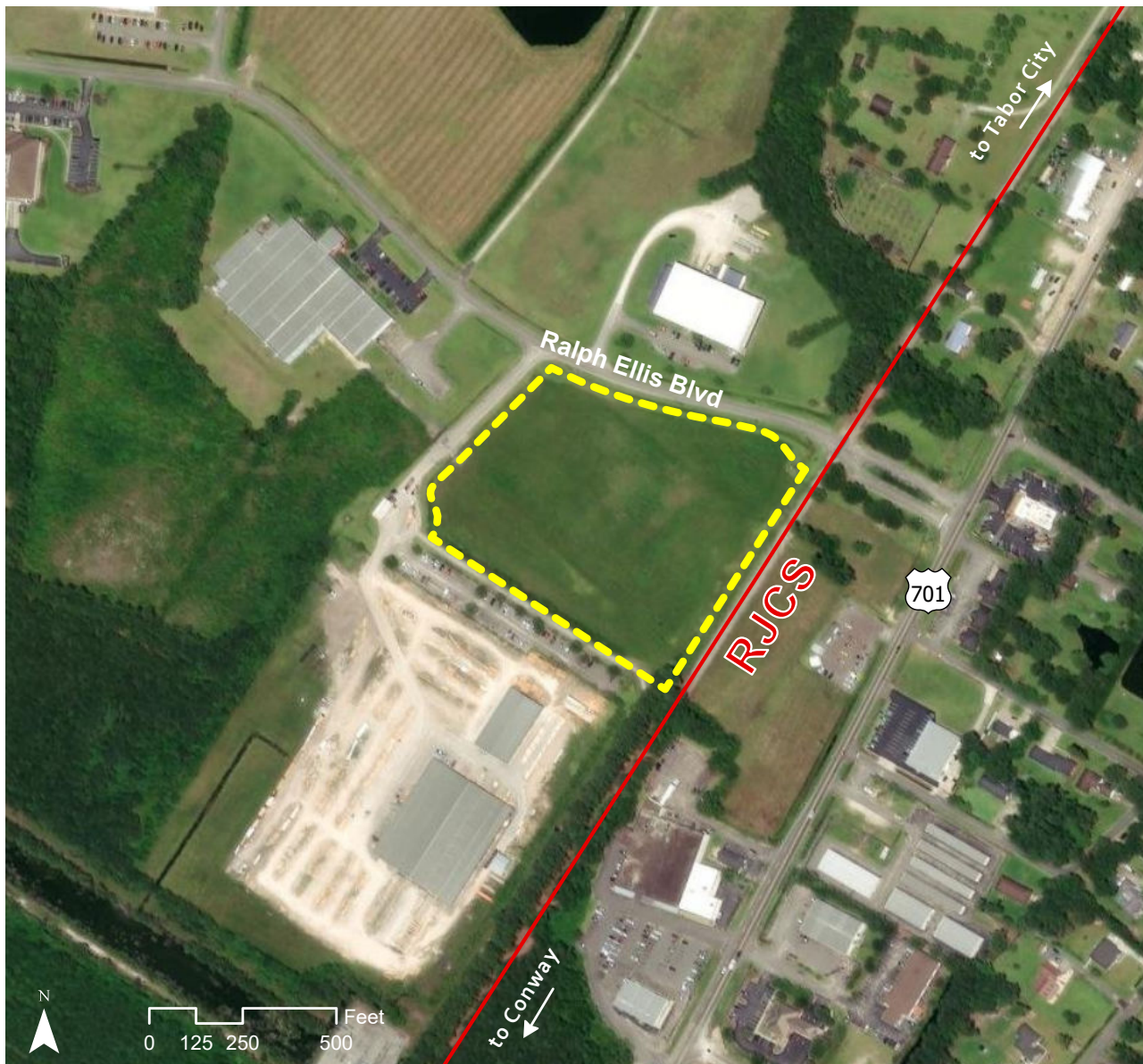
LORIS INDUSTRIAL PARK LORIS, SC

OVERVIEW

TYPE: SITE
ACRES: 7.7
DIVISIBLE: NO

ZONING: LIGHT INDUSTRIAL
OWNERSHIP: PUBLIC
FOR SALE/ LEASE: SALE

PRICE PER ACRE:
\$17,000- 25,000



JAKE WEIR
SR. DIRECTOR, INDUSTRIAL DEVELOPMENT
JAKE.WEIR@RJCORMAN.COM
C: 859-469-2560

RJCORMAN.COM/DEVELOPMENT



INDUSTRIAL DEVELOPMENT SITE

LORIS INDUSTRIAL PARK

LORIS, SC

LOCATION

Latitude, Longitude: 34.0686, -78.8822

County: Horry

UTILITY

Electric Provider / Details: Santee Cooper / On site

Water Provider / Details: Grand Strand Water & Sewer Authority / 1" line on site

Sewer Provider / Details: Grand Strand Water & Sewer / 3" gravity line on site

Gas Provider / Details: Service not currently available / Service not currently available

Telecom Provider / Details: Horry Telephone Cooperative

TRANSPORTATION

Nearest Highway / Distance: Hwy 701 / 0.1 miles

Nearest Interstate / Distance: I-95 / 45 miles

Nearest Airport / Distance: Myrtle Beach International / 35 miles

Nearest Port / Distance: Port of Georgetown (Break- Bulk Port) / 59 miles

RAIL

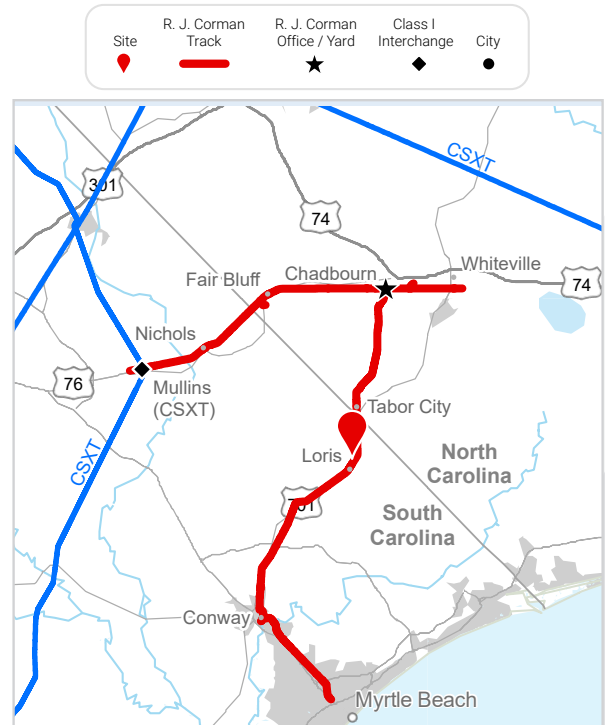
Closest Distribution Center: Columbia Material Sales Yard

Closest Transloading Facility: Conway Transload

Class I Interchange Partner(s): CSX

Interchange Point(s): Mullins

Served by: RJCS



JAKE WEIR SR. DIRECTOR, INDUSTRIAL DEVELOPMENT
 JAKE.WEIR@RJCORMAN.COM
 C: 859-469-2560

RJORMAN.COM/DEVELOPMENT