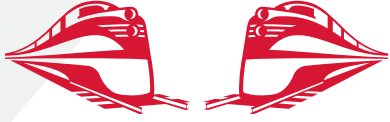


# Rj Corman

Railroad Company



## 300 LASLEY AVENUE BUILDING HANOVER TOWNSHIP, PA

### OVERVIEW

**TYPE:** BUILDING

**ACRES:** 33.74

**BUILDING SQ. FT.:** 93,955

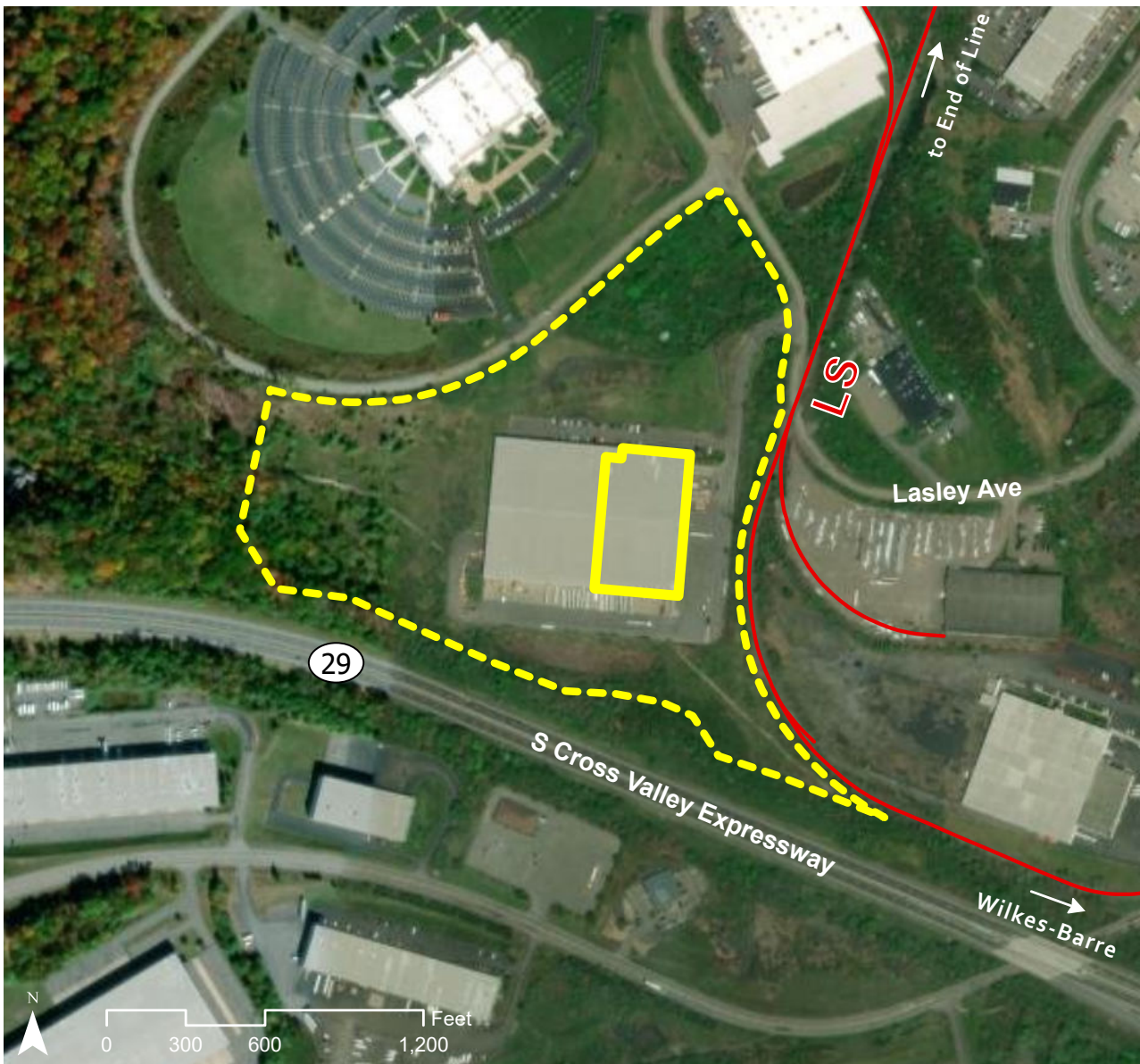
**DIVISIBLE:** YES

**ZONING:** INDUSTRIAL

**OWNERSHIP:** PRIVATE

**FOR SALE/ LEASE:** LEASE

**PRICE PER ACRE:** NEGOTIABLE



INDUSTRIAL DEVELOPMENT SITE

**JAKE WEIR**

DIRECTOR, COMMERCIAL & INDUSTRIAL DEVELOPMENT

JAKE.WEIR@RJCORMAN.COM

C: 859-469-2560

[RJCORMAN.COM/DEVELOPMENT](http://RJCORMAN.COM/DEVELOPMENT)

# 300 LASLEY AVENUE BUILDING

## HANOVER TOWNSHIP, PA

### LOCATION

**Latitude, Longitude:** 41.204250, -75.928810

**County:** Luzerne

### PROPERTY DETAILS

**Under Roof:** 224,000 SF Total

**Ceiling Height:** 34.6'

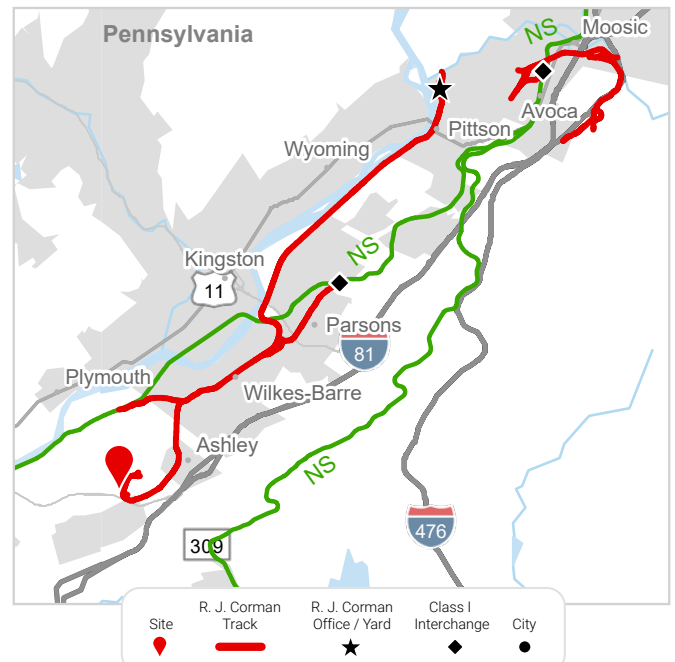
**Concrete Pad:** 6" reinforced concrete

**Inside Rail:** No

**Scales:** No

**Security:** No

**Office Space:** 4,462 SF



### UTILITY

**Electric Provider / Details:** UGI Utilities / 1200 Amps (expandable to 4000 Amps), 3-phase service

**Water Provider / Details:** PA American Water Company / At Building

**Sewer Provider / Details:** Wyoming Valley Sanitary Authority / At Building

**Gas Provider / Details:** UGI Utilities / At Building

**Telecom Provider / Details:** Multiple / Available at site

### TRANSPORTATION

**Nearest Highway / Distance:** S.R. 29 / 1 mile

**Nearest Interstate / Distance:** I-81 / 1.5 miles

**Nearest Airport / Distance:** Wilkes-Barre/Scranton International Airport (AVP) / 16.5 Miles

**Nearest Port / Distance:** Port Newark / Elizabeth / 126 miles

### R. J. CORMAN

**Closest Distribution Center:** Allentown

**Closest Transloading Facility:** Allentown

**Class I Interchange Partner(s):** Norfolk Southern

**Interchange Points(s):** Wilkes-Barre

**Served by:** LS



**JAKE WEIR** DIRECTOR, COMMERCIAL & INDUSTRIAL DEVELOPMENT

JAKE.WEIR@RJCORMAN.COM

C: 859-469-2560

RJCORMAN.COM/DEVELOPMENT